

# TI Designs: TIDA-050001

## HDMI® 2.0 ESD Protection Reference Design



### Description

This reference design is to show two distinct ways to protect the TMDS lines of a HDMI® 2.0 drivers and retimers from electrostatic discharge (ESD). The HDMI standard is used in many applications from set-top-boxes to notebooks to TV's. Since these ports are almost always external they are susceptible to an ESD event. The high speed HDMI 2.0 signals mean that the drivers cannot integrate good ESD protection in the IC so a discrete ESD protection device is needed. The HDMI drivers are also generally extremely sensitive meaning the ESD protection has to be ultra-low clamping. This design will go through the initial HDMI 2.0 compliance data for two setups, the ESD testing done on each board and the final HDMI 2.0 compliance data after testing. For more information about protecting the other 5 pins on the HDMI connector please see the [ESD Protection for HDMI Applications](#) technote.

### Resources

|                              |                |
|------------------------------|----------------|
| <a href="#">TIDA-050001</a>  | Design Folder  |
| <a href="#">ESD224</a>       | Product Folder |
| <a href="#">TMDS181RGZEV</a> | Product Folder |
| <a href="#">SN65DP159</a>    | Product Folder |



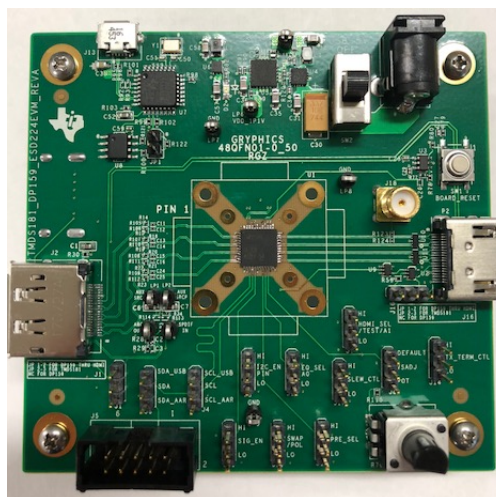
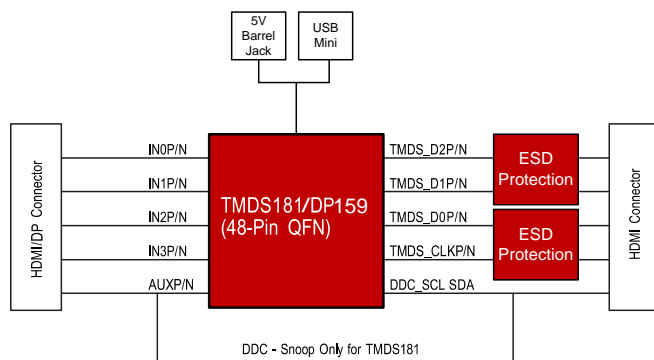
[ASK Our E2E™ Experts](#)

### Features

- Assists in HDMI 2.0 Compliance
- IEC 61000-4-2 Level 4 ( $\pm 8$  kV Contact)
- Provides Ultra Low Clamping Voltage Necessary to Protect Sensitive HDMI Drivers
- Compatibility with Both DP159 and TMDS181

### Applications

- [Set-Top Boxes](#)
- [Notebooks](#)
- [TV's](#)





An IMPORTANT NOTICE at the end of this TI reference design addresses authorized use, intellectual property matters and other important disclaimers and information.

## 1 System Description

This reference 'standalone' design will showcase two ways to protect the HDMI 2.0 driver and redriver TMDS lines. First using the ultra low clamping ESD224 and second using the ESD224 with a common mode choke for applications with electromagnetic interference (EMI) concerns. This design specifically targets the TMDS clock and data lines for ESD protection. This guide will go through the initial HDMI 2.0 compliance testing showing that the protection stage allows HDMI compliance. Then showcase an ESD strike on the TMDS lines with the clamping voltage during the event. Then show the post test HDMI compliance data to show the protection stage has worked as intended.

The HDMI 2.0 specification has a TMDS differential clock signal and is rated for 18 Gbps between three differential data pairs, data line 0 ( $D0\pm$ ), data line 1 ( $D1\pm$ ), data line 2 ( $D2\pm$ ), with each pair at 6 Gbps. These HDMI signals are usually routed to a connector which then runs through a cable to another driver on the receiving end. The connector cable interface is exposed to the outside world and therefore susceptible to the ESD event. With the data rates so high in this application, care must be taken so that the protection stage will not interrupt normal operation of the data but will also protect during the ESD event. Furthermore, the protection stage is required to clamp the voltage to an acceptable level for the HDMI driver.

For each of these schemes the ESD224 will be used because of its ultra low clamping performance and low capacitance value. The difference in the two protection schemes covered in this design are based on whether EMI is an issue. If EMI is not a concern the first strategy can be used of only the ESD224. However, for applications in noisy environment or ones that require extremely low noise, designers will typically use a common mode choke in the protection stage that will eliminate the common mode noise and let the differential signal pass uninhibited. However, the trade off is that the CMC will take most of the bandwidth of the HDMI 2.0 signal. Therefore care must be taken in design to not have much more parasitics in the system so that the ESD224 with the CMC can have enough bandwidth while providing robust protection.

## 2 System Overview

### 2.1 Block Diagram

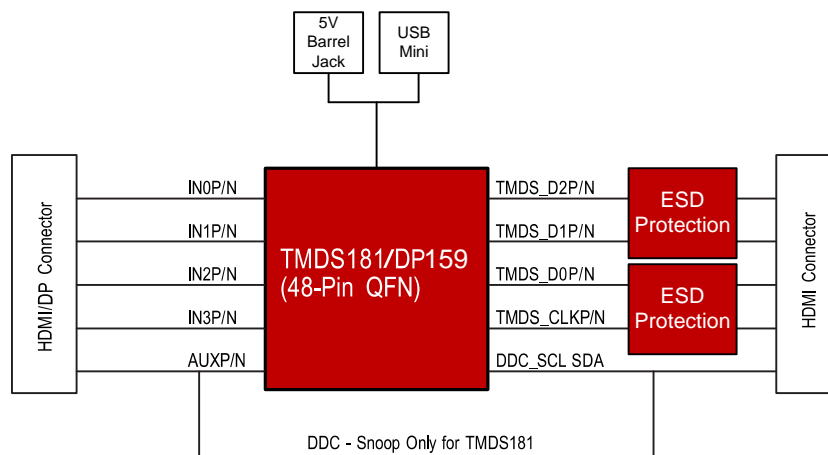


Figure 1. TIDA-05001 Block Diagram

### 2.2 Design Considerations

Protecting HDMI drivers or systems on chip (SoC) from ESD, requires that the protection stage be as close as possible to the source of the ESD, in this case the HDMI output connector. This ensures the least amount of parasitics between the pulse and the protection path. When routing the TMDS lines care must be taken that each pair is differentially routed 100  $\Omega$  differential impedance. The ESD224 is non-flow through routing so the traces have an input and an output in the device. This is discussed more in [Section 2.4.3](#)

### 2.3 Highlighted Products

#### 2.3.1 ESD224

The ESD224 is a bidirectional TVS ESD protection diode array for high speed applications such as USB 3.0 and HDMI 2.0. The ESD224 is rated to dissipate ESD strikes at the maximum level specified in the IEC 61000-4-2 international standard (Level 4). The ESD224 employs on-chip differentially matched series elements to enhance down-stream ESD clamping performance while maintaining the signal compliance for high speed interfaces. The ultra-low clamping performance and high differential bandwidth provided by the ESD224 on-chip ESD protection network enables the device to be HDMI 2.0 compliant while providing robust protection to downstream HDMI devices. For more information see [ESD224 HDMI 2.0 Compliance and Protection](#).

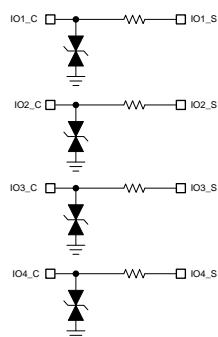


Figure 2. ESD224 Functional Block Diagram

### 2.3.2 TMDS181

The TMDS181 is a digital video interface (DVI) or high-definition multimedia interface (HDMI) retimer. The TMDS181 support four TMDS channels, audio return channel (SPDIF\_IN/ARC\_OUT), and digital display control (DDC) interfaces. The TMDS181 supports signaling rates up to 6 Gbps to allow for the highest resolutions of 4k2k60p 24 bits per pixel and up to WUXGA 16-bit color depth or 1080 p with higher refresh rates. The TMDS181 can be configured to support the HDMI2.0a standard. The TMDS181 automatically configures itself as a redriver at low data rate (<1.0 Gbps) or as a retimer above this data rate. Redriver mode supports HDMI1.4b with data rates up to 3.4 Gbps.

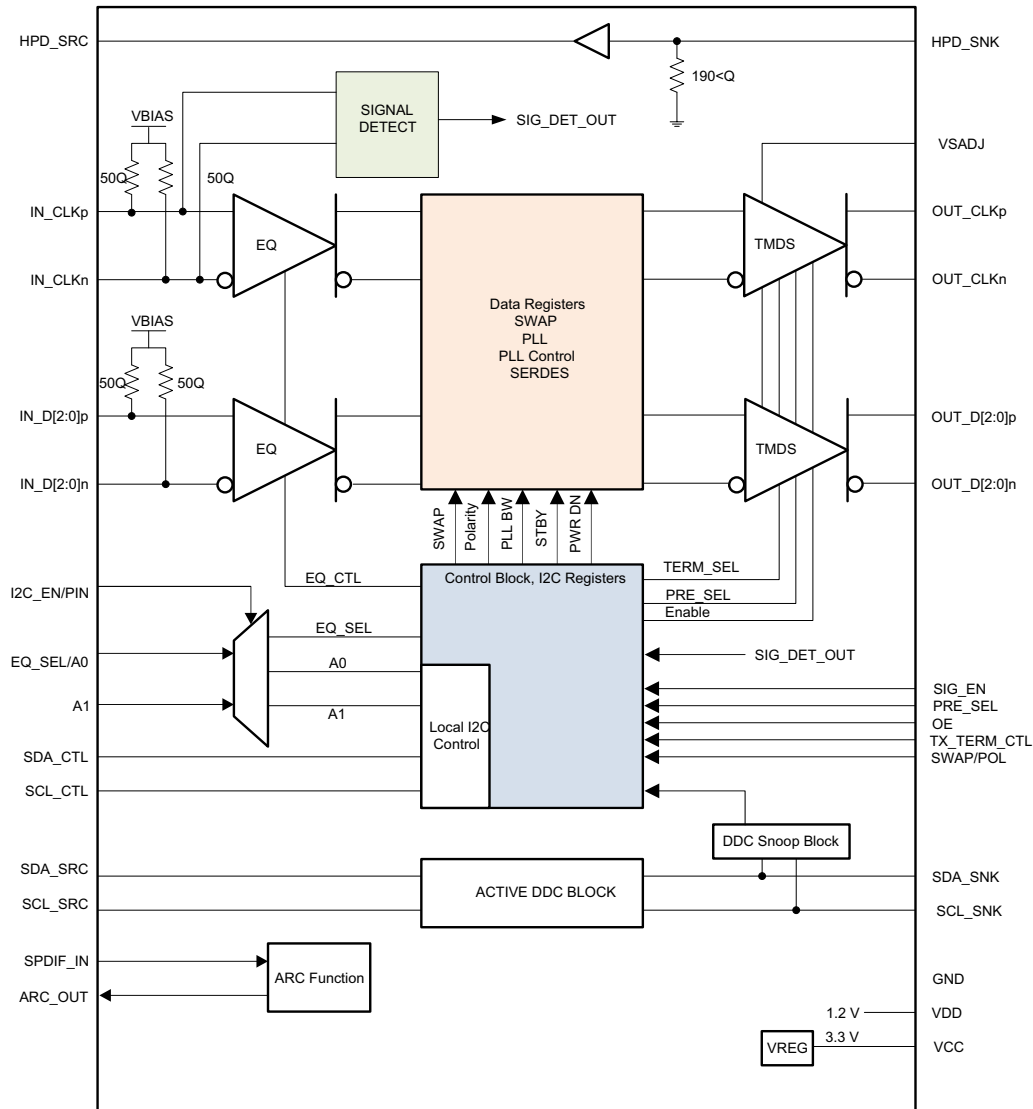
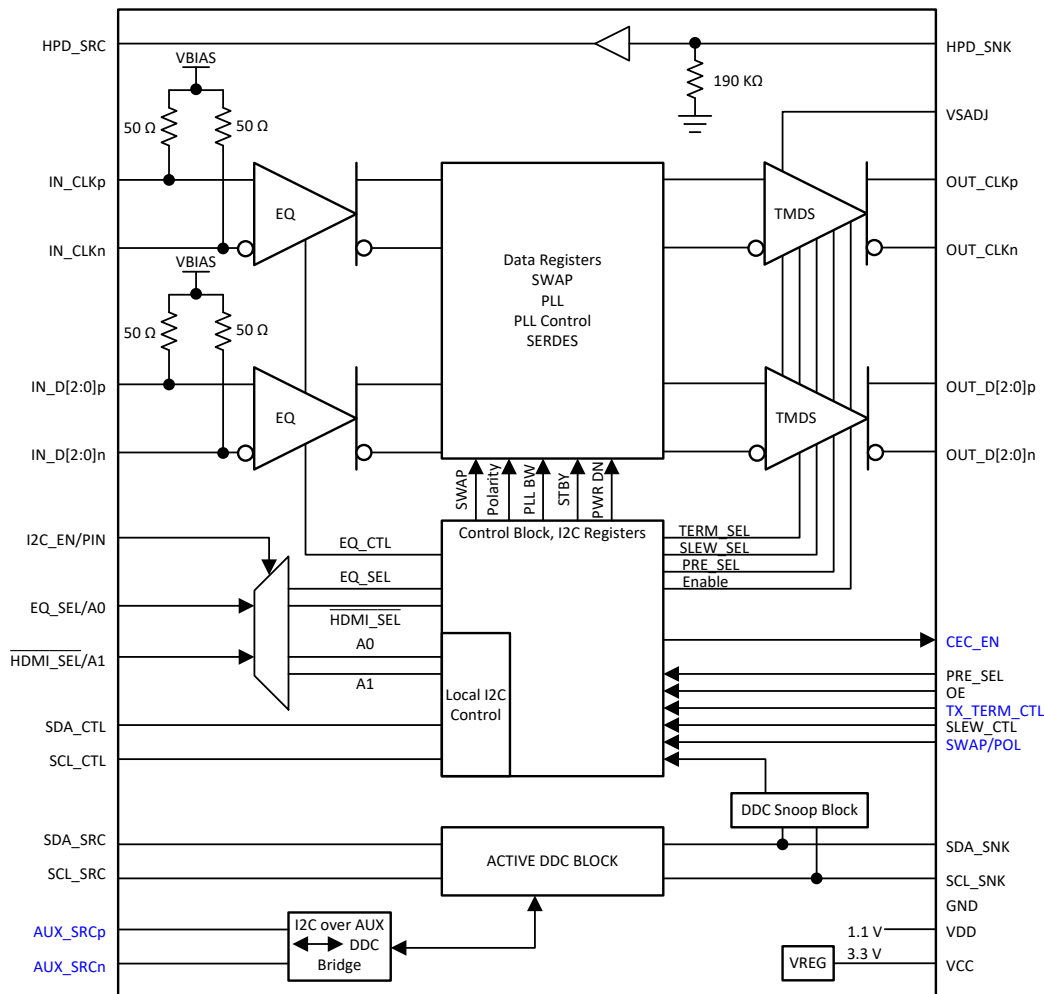


Figure 3. TMDS181 Functional Block Diagram

### 2.3.3 SN65DP159

The SN65DP159 device is a dual mode DisplayPort to transition-minimized differential signal (TMDS) retimer supporting digital video interface (DVI) 1.0 and high-definition multimedia interface (HDMI) 1.4 b and 2.0 output signals. The SN65DP159 device supports the dual mode standard version 1.1 type 1 and type 2 through the DDC link or AUX channel. The SN65DP159 device supports data rate up to 6-Gbps per data lane to support Ultra HD (4k × 2k / 60-Hz) 8-bits per color high-resolution video and HDTV with 16-bit color depth at 1080p (1920 × 1080 / 60-Hz). The SN65DP159 device can automatically configure itself as a re-driver at data rates <1 Gbps, or as a retimer at more than this data rate. This feature can be turned off through I<sup>2</sup>C programming.



**Figure 4. SN65DP159 Functional Block Diagram**

## 2.4 System Design Theory

### 2.4.1 TMDS181RGZEV

This board is built off the existing TMDS181RGZEV with minor modifications allowing for both the TMDS181 and the DP159 to be tested. The major changes are the addition of the display port connector for the DP159 testing and the addition of a protection stage at the output of the main device. R123 was added to D2P to be able to connect a cable to measure the ESD waveform seen on the system side of the ESD strike. For symmetry, the R124 footprint was added to D2N to make sure there was not additional skew added to the signal. During the HDMI testing and normal ESD testing R123 was depopulated and therefore not inhibiting the waveforms. For a full schematic of the TMDS181RGZEV see the [TMDS181RGZEV User's Guide](#).

## 2.4.2 Choosing the Right Protection

ESD pulses are very high energy and very short durations. To protect from damage, often times a discrete protection stage is used at the input of the where the ESD discharge is likely to occur. When choosing the ESD protection there are several aspects that can make the process more straight forward. The different parameters and concerns are discussed in TI's training series [ESD Essentials](#). This six part series walks through the process of understanding the ESD pulse to selecting correct protection. It is also worth noting that doing the transmission line pulse, TLP, testing of the DP159 and the TMDS181 gives a clear answer to what clamping voltage will most likely protect that IC.

The TLP results will give an indication of what the clamping voltage must be, the IEC61000-4-2 should be at 30 ns. The rule of thumb is that 2 A TLP is equivalent to 1 kV ESD. Shown below are the TLP results from each device. It can be seen that the TMDS181 has a maximum value of approximately 9 V at 4 A on the positive side and approximately -6 V at 5 A on the negative side before device failure. Likewise the DP159's maximum clamping value is approximately 8.5 V at 4.5 A on the positive side and approximately -6 V at 5 A on the negative side before device failure. The clamping voltage of the ESD224 found in the [datasheet](#) is at 8 kV is 8 V and -5 V at -8 kV, therefore the clamping voltage our protection stage is enough to protect these HDMI devices.

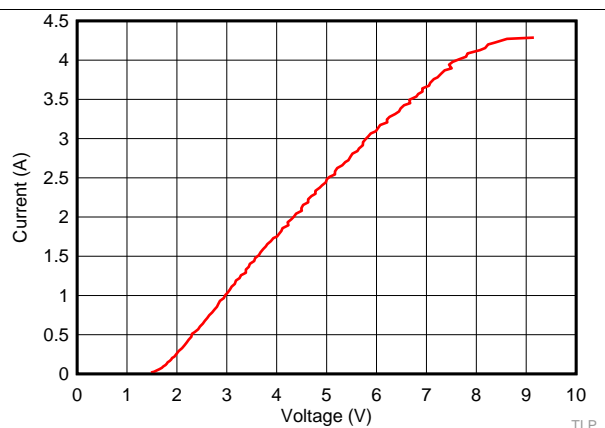


Figure 5. TMDS181 TLP Clamping Waveform

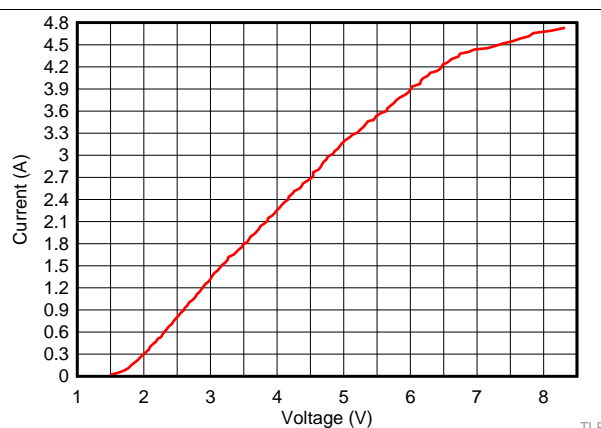


Figure 6. DP159 TLP Clamping Waveform

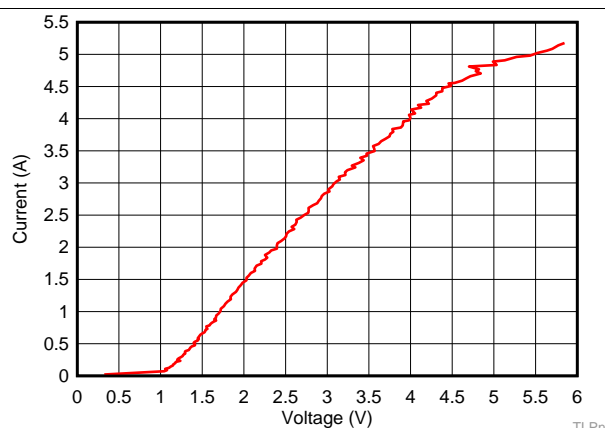


Figure 7. TMDS181 Negative TLP Clamping Waveform

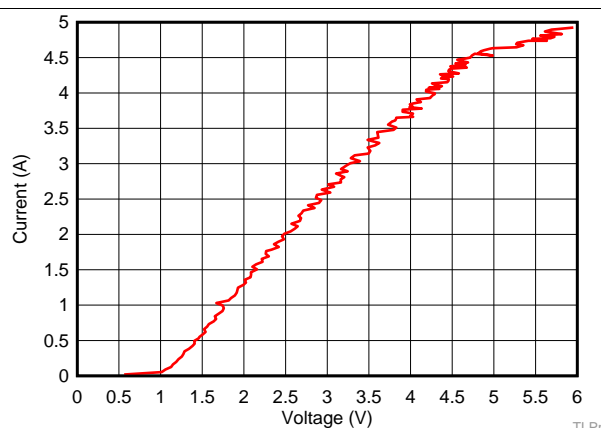


Figure 8. DP159 Negative TLP Clamping Waveform

### 2.4.3 Protection Stages

Since the TLP of the TMDS181 and DP159 show how low the clamping voltage must be and how little current the device can take before breaking, the protection stage must be robust. The dynamic resistance ( $R_{DYN}$ ) of many ESD devices is not sufficient to keep the clamping voltage so low. This means the addition of a series element in the circuit is necessary to drop the voltage low enough to provide adequate protection shown in Figure 9.

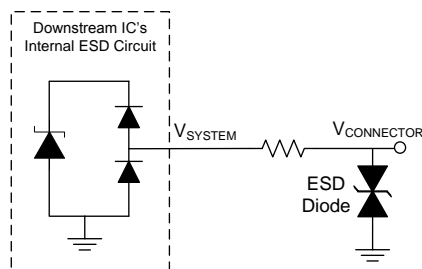


Figure 9. Low Clamping ESD Protection

$V_{CONNECTOR}$  is the voltage seen on the connector side where the ESD strike is originating.  $V_{SYSTEM}$  is the voltage seen by the downstream IC. Picturing the protection stage like this it is easy to see the voltage drop since the series element will by nature have a resistance to it. The key concern beyond that is to make sure that the resistance of the series component does not interfere with the HDMI 2.0 signal. This series component must be differentially matched as to not cause skew in the signal as well as be a low enough value to meet the differential voltage swing requirement of HDMI 2.0.

This design covers two distinct types of protection for the HDMI 2.0 TMDS signal lines. The first is the ESD224 which is a 4-channel ultra-low clamping ESD device shown in Figure 10. This fits in applications that have lower noise concerns and can save considerably by not having to include a CMC but still provides robust protection because of the series element introduced in the design. This clamping voltage on the system side is specified in the datasheet to indicate that it can protect the ESD sensitive HDMI drivers.

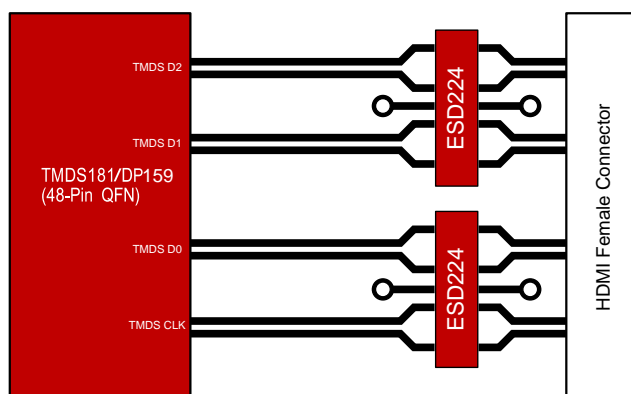
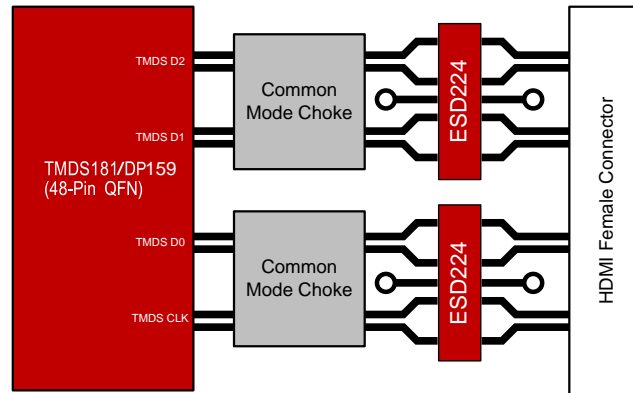


Figure 10. ESD224 Protection Schematic

The other protection stage covered in this design use a discrete ESD diode, ESD224, and a CMC for EMI reduction. The CMC is useful to reduce the common mode noise on each differential pair in noisy environments. The CMC will also make the traces discontinuous again, adding more series resistance to further reduce the clamping voltage on the system side. Using the CMC in conjuncture with the ESD224 means that the signal integrity will be affected more as they are both taking up significant bandwidth. However, as can be seen in the [Section 3.2](#), the combination of ESD224 plus a high speed CMC can meet the HDMI 2.0 requirement. The protection stage with ESD diode and CMC can be seen in [Figure 11](#).



**Figure 11. ESD224 and CMC Protection Schematic**



## 3 Hardware, Software, Testing Requirements, and Test Results

### 3.1 Required Hardware and Software

#### 3.1.1 Hardware

The board was made to be interchangeable from the TMD181 to the DP159. It was also made to take in DisplayPort++ (DP++) input as well as HDMI. However in order to do this there are several components need to be changed to enable operation of the other device.

##### 3.1.1.1 Input Signal

To use either the HDMI or DP++ input connector there are zero Ohm resistors that have to be either populated or depopulated. For the HDMI connector, R15, R15, R18, R19, R20, R21, R22 and R23 should be populated while R105, R106, R108, R109, R110, R111, R112 should be depopulated. For the DP+ connector it is the opposite. This can be seen in [Figure 12](#).

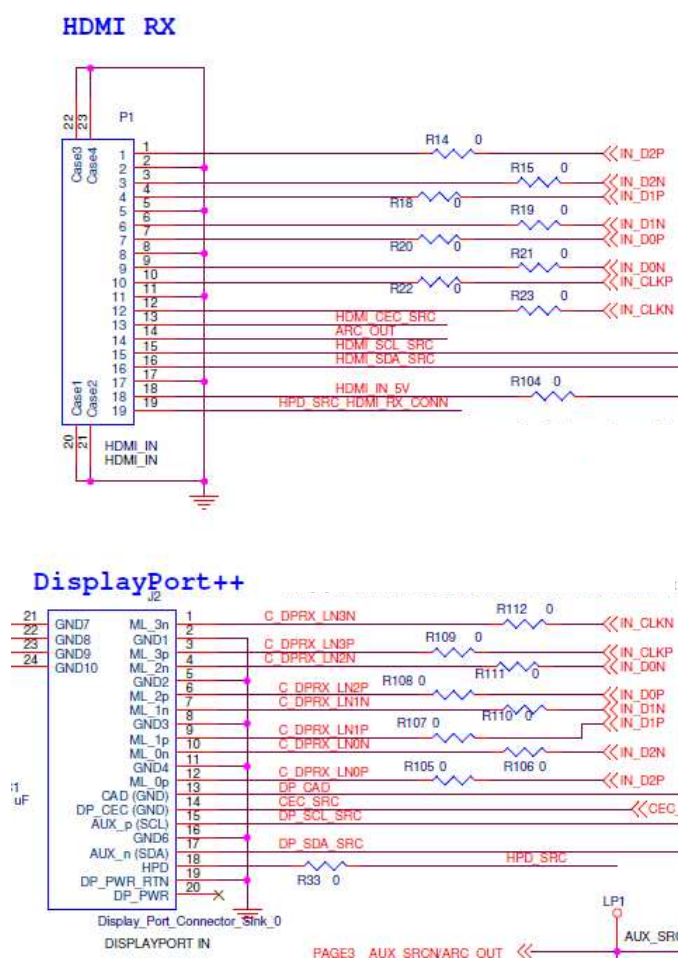


Figure 12. HDMI or DP++ Input Connector

### 3.1.1.2 SN65DP159

The SN65DP159 implementation is shown in Figure 13. AC coupling capacitors are used on the TMDS input lines. This is taken from the SN65DP159 datasheet so it does not show the ESD protection on the output TMDS lines.

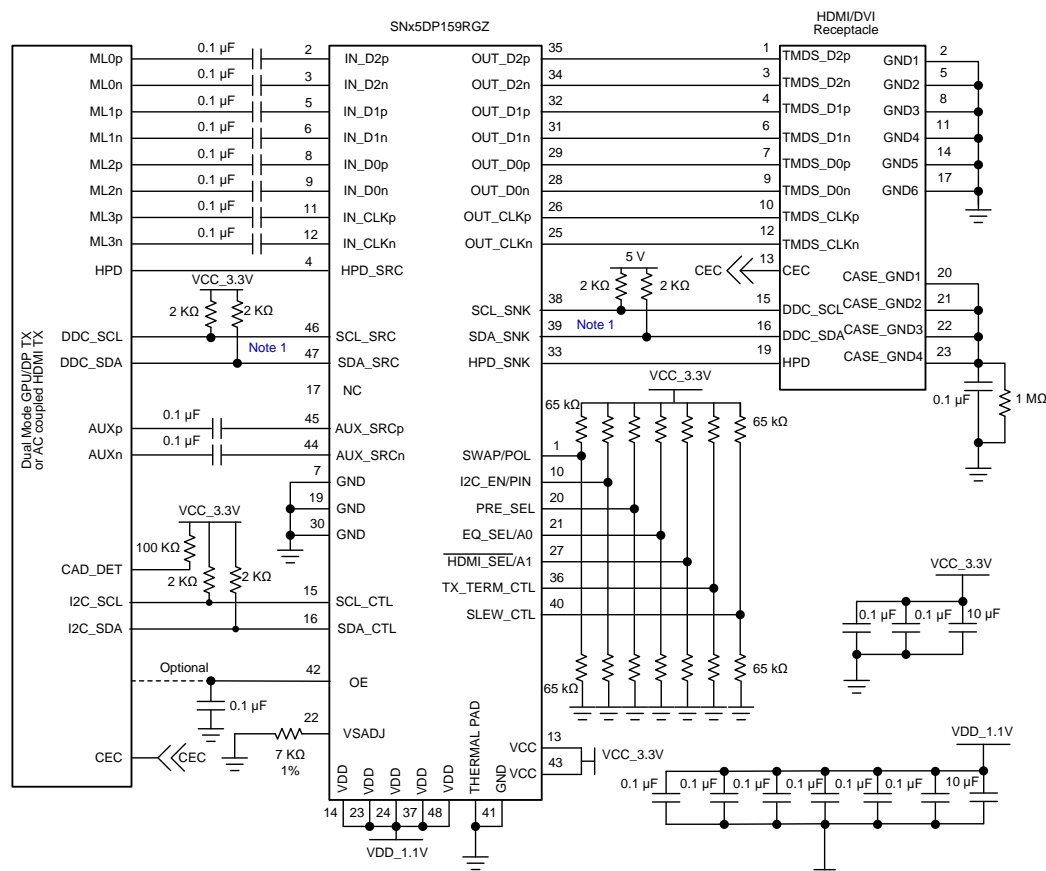
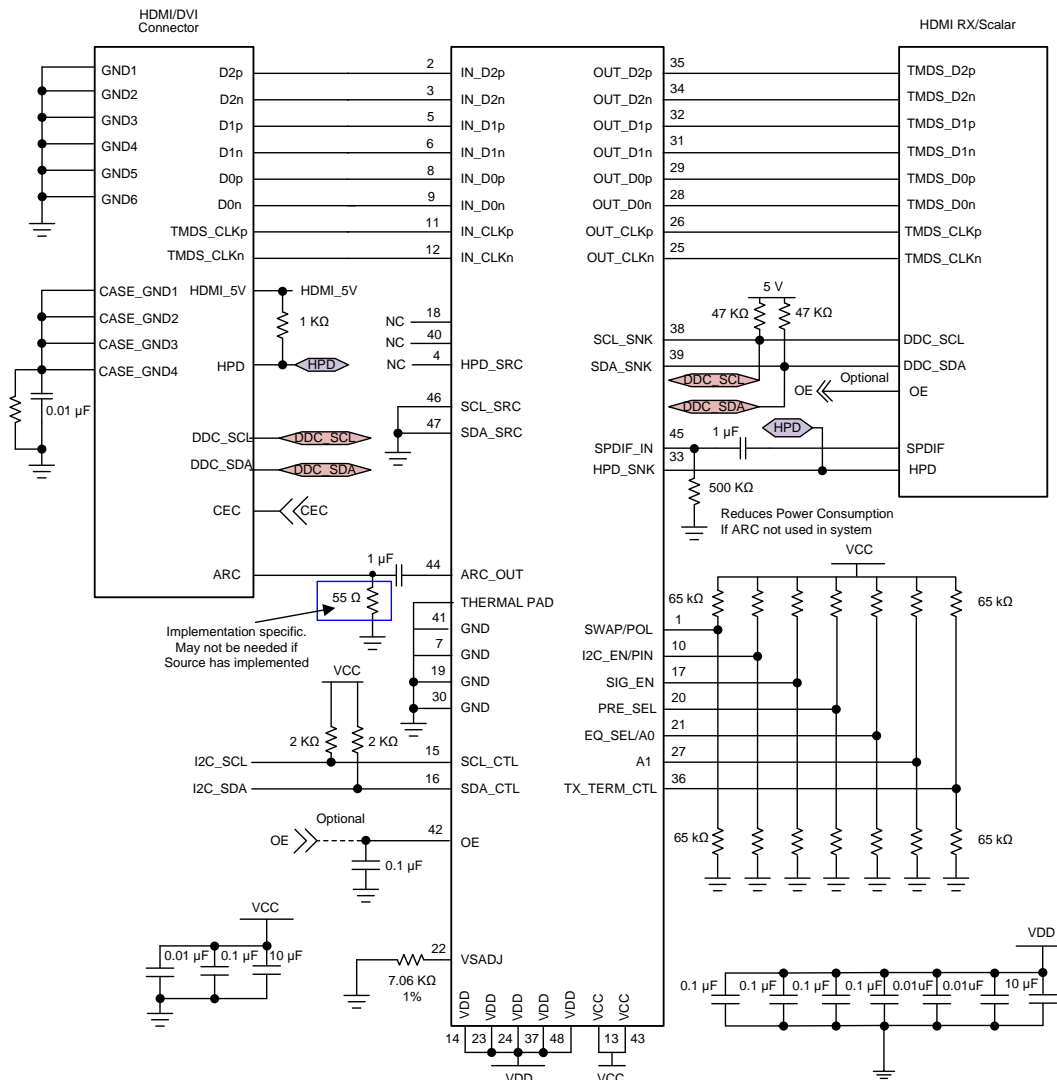


Figure 13. SN65DP159 Implementation

### 3.1.1.3 TMDS181

In order to run TMDS181 in 6-Gbps mode, DDC snoop must be implemented as shown in Figure 14. This is taken from the TMDS181 datasheet so it does not show the ESD protection on the output TMDS lines.



**Figure 14. TMDS181 in Sink Side Application**

It is important to notice that the TMDS lines are connected directly from the input connector to the TMDS181 device. This means C11, C12, C13, C14, C15, C16, C24, and C25 all need to be changed to 0  $\Omega$  resistors because the TMDS181 can take bias voltages on the input side. Also the SCL and SDA source pins are shorted to ground while the SCL and SDA sink side is connected to both the input connector SCL and SDA pins as well as the output connector SCL and SDA pins.

Also seen on page 2 of the schematic C2 and C3 should be not populated for TMDS181.

### 3.1.1.4 Switches and Jumper Orientation

The board can be powered two different ways, either from the USB Micro connector, J13, or barrel jack with 5 V, J9. SW2 allows the option to choose between. Moving the switch to position 1 allows the board to be powered off of a 5-V barrel jack connector, J9. Moving the switch to position 3 allows the board to be powered from the USB mini connector, J13. Position 2 on the switch means that the board is not powered.

[Table 1](#) explains the jumpers orientation to use either DP159 or TMDS181.

**Table 1. Jumpers**

| Jumper     | Description   | Jumper Settings                               |  |
|------------|---|---|--|
| J1 and J16 | HDMI driver selection   | For <b>DP159</b> jump pins 1-2 or NC          | For <b>TMDS181</b> jump pins 2-3         |
| J3         | I <sup>2</sup> C Enable   | To <b>enable</b> jump pins 1-2                | To <b>disable</b> jump pins 1-2          |
| J4 and J6  | Select between writing I <sup>2</sup> C with USB-micro or Aardvark                            | For <b>USB</b> jump pins 1-2                  | For <b>Aardvark</b> jump pins 2-3        |
| J8         | Adjust TMDS-compliant voltage swing control nominal resistor to GND, or V <sub>sadj</sub> pin | For use of <b>potentiometer</b> jump pins 1-2 | For <b>default</b> 6.98kΩ jump 2-3 or NC |

### 3.1.2 Software

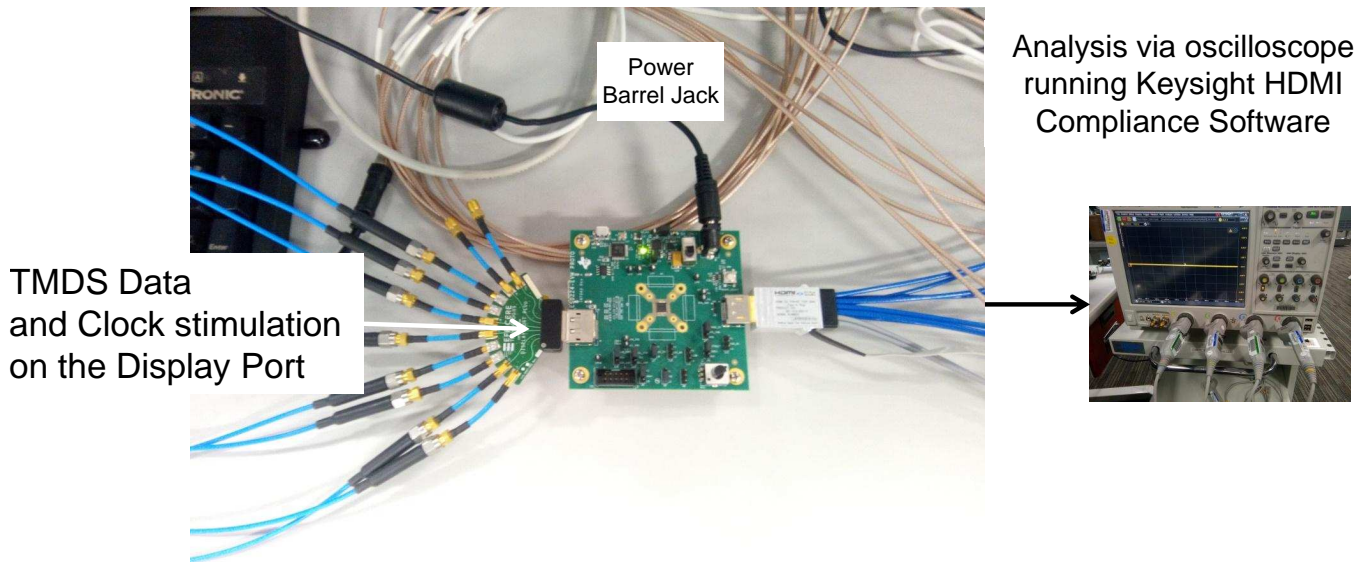
Both devices must be set up in 6-Gbps mode in a sink application. Refer to [TMDS181 Datasheet](#) and [SNx5DP159 Datasheet](#) for more information about the register settings needed to set each device up to send HDMI 2.0 signals.

## 3.2 Testing and Results

The testing of the design was to check the initial HDMI 2.0 compliance using Keysight's HDMI Compliance Software, then strike the board according to the IEC 61000-4-2 standard at ±12 kV to show the full range of the ESD224 protection, then retest the board for HDMI 2.0 compliance to observe there are no shifts.

### 3.2.1 Test Setup - HDMI 2.0 Compliance Software

Using Keysight's HDMI Compliance Software on an oscilloscope and a simulator for the TMDS data and clock lines, HDMI 2.0 compliance could be established. This setup can be seen in [Figure 15](#). This design's main concern is with the ESD protection provided by the two stages, to see a more in-depth look at the device compliance and protection see the [ESD224 HDMI ® 2.0 Compliance and Protection](#) application report.



**Figure 15. HDMI Test Setup for DP159**

The specific HDMI 2.0 compliance tests run were the rise and fall times for each data lane including clock, the maximum and minimum for each data lane and the inter-pair skew for between each data lane. Once these tests were run, the boards would then go to be struck with ESD and then return to rerun the same HDMI 2.0 testing to see any shifts in performance.

### 3.2.2 Test Setup - ESD Striking

The board was placed in the setup as defined by the [IEC 61000-4-2](#) standard. It was then powered by a USB cable and an adapter was attached to the output HDMI connector to provide a striking point as seen in [Figure 16](#). All of the TMDS pins have the same protection stage attached to them so therefore the results of the pin being struck are the same for each of the protected pins. The pin being struck in [Figure 16](#) is D2P. This pin was chosen specifically because it is an outer most pin so an SMA connector could be connected to the line to see the clamping voltage that the system side sees. It is important to note that the waveform does look different than the IEC61000-4-2 standard waveform because of the reflections caused by the stub of the SMA connector. However for the full IEC 61000-4-2  $\pm 8$  kV and  $\pm 12$  kV contact test, this stub was removed by depopulating R123.



**Figure 16. ESD Test Setup**

For more information about the IEC 61000-4-2 standard see the application report [IEC 61000-4-x Tests for TI's Protection Devices](#). It is important to note that while the protection stage between the two cases is different, the same method with the resistor to SMA connector is used.

### 3.2.3 Test Results

#### 3.2.3.1 TMDS181 with ESD224

The results show the pretest differential Keysight HDMI 2.0 compliance test passes with margin as seen in [Table 2](#).

The eye diagram for the D2 TMDS line is shown in [Figure 17](#).



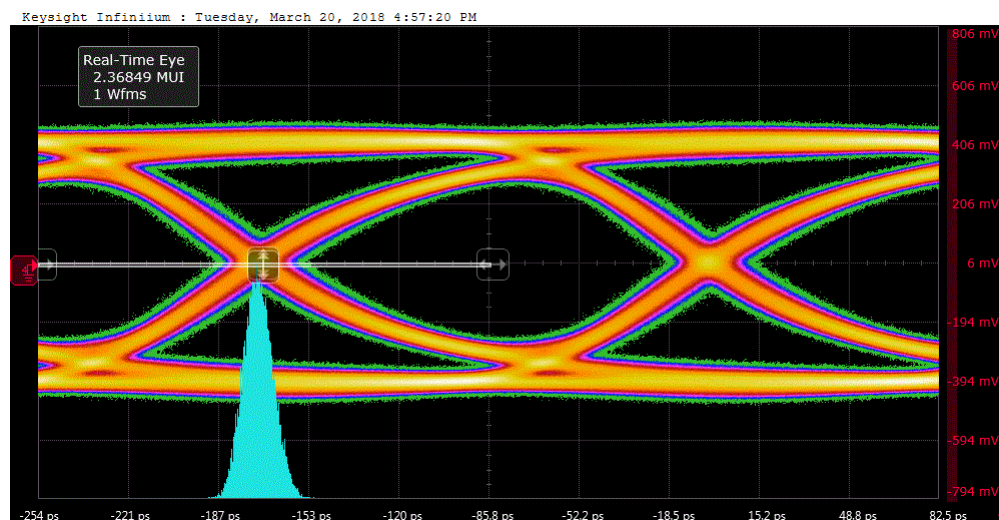


Figure 17. D2 TMDS181 with ESD224 Eye Diagram Pretest

The board was taken and struck with the IEC 61000-4-2 ESD waveform using the method described in [Section 3.2.2](#). The clamping waveform for +8 kV and –8 kV can be seen in [Figure 18](#) and [Figure 19](#). The leakage remained the same as the pretest showing that the driver has not been damaged.

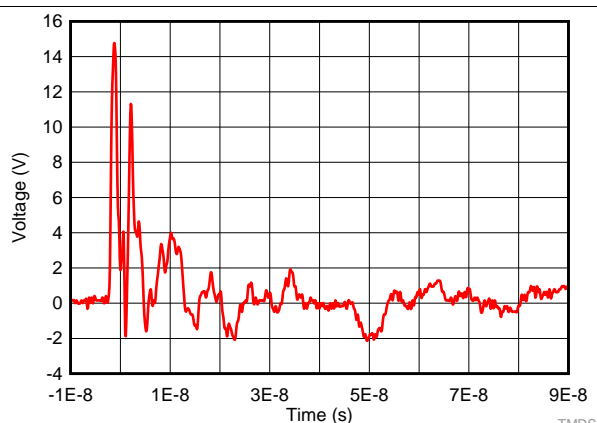


Figure 18. +8 kV Clamping Waveform TMDS181 with ESD224

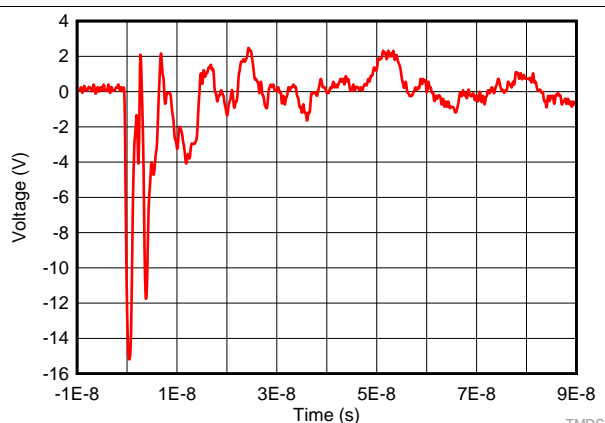


Figure 19. –8 kV Clamping Waveform TMDS181 with ESD224

The clamping voltage at 30 ns as can be seen in the waveform is much lower than the required voltage shown in [Figure 5](#). The board was then struck 10 times per the IEC61000-4-2 standard at one second intervals with  $\pm 12$  kV ESD to show the full protection of the ESD224. Afterwards it was ran back through the HDMI compliance shown in [Table 3](#).

The post test eye diagram for D2 TMDS line is shown in [Figure 20](#).

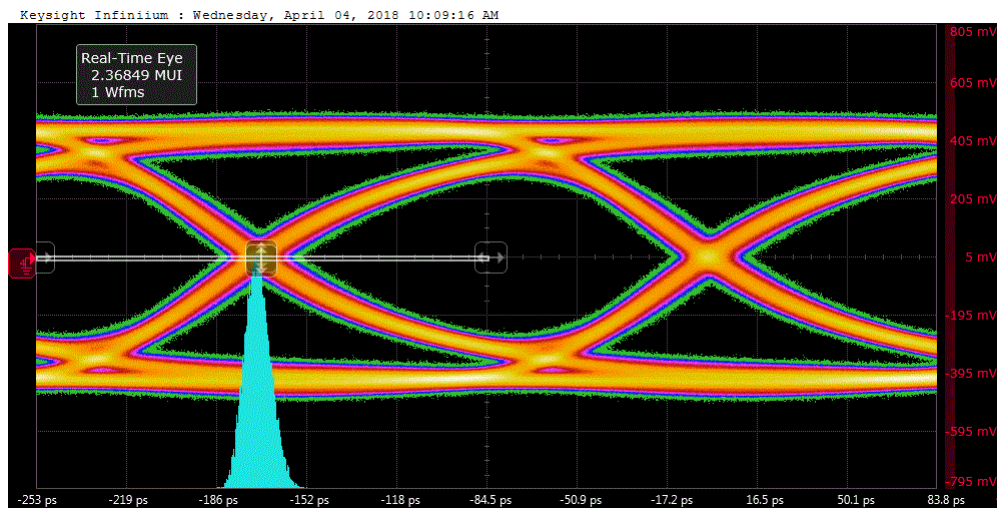


Figure 20.  $\pm 12$  kV TMD5181 with ESD224 Post-test Eye Diagram

As shown in Figure 20 there is no change in the eye diagram from the pretest. Refer to the Section 5 to compare pre and post tests results.

### 3.2.3.2 DP159 with ESD224 and CMC

Next testing the ESD224 plus CMC with the DP159 and with the same HDMI2.0 compliance pretests yields the results below.

The pretest eye diagram for D2 TMD5 line is shown in Figure 21.

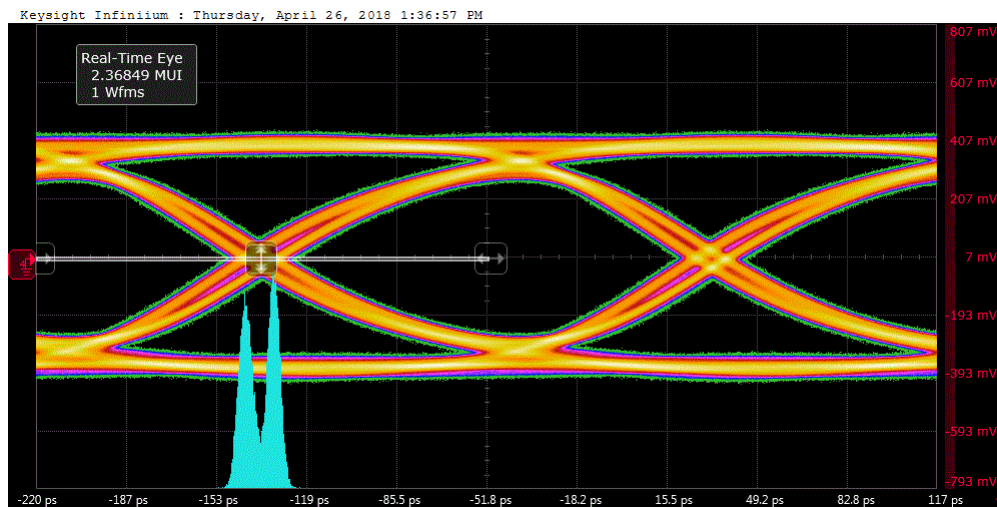
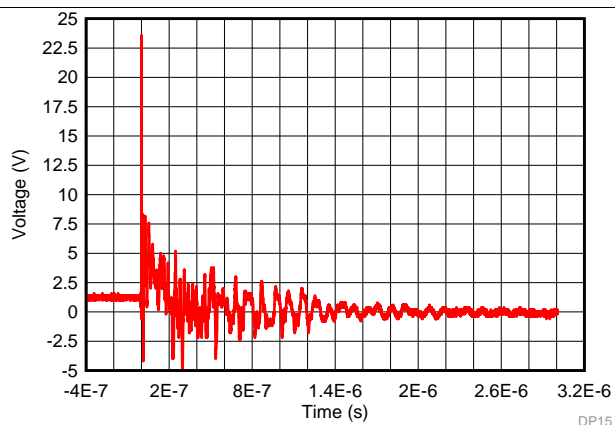


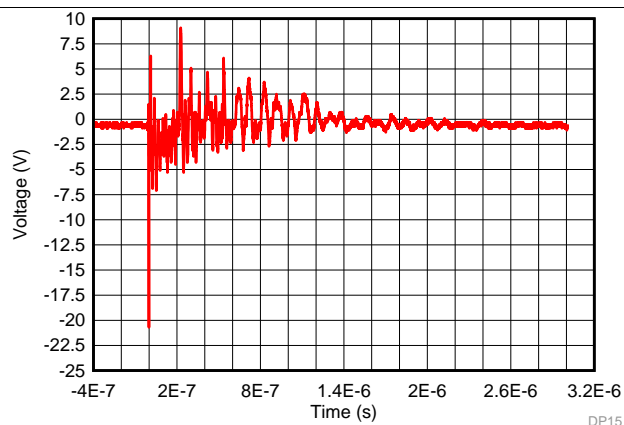
Figure 21. D2 DP159 with ESD224 and CMC Eye Diagram Pretest

The board was taken and struck with the IEC61000-4-2 ESD waveform using the method described in Section 3.2.2. The clamping waveform for +8 kV and -8 kV can be seen in Figure 22 and Figure 23. The leakage remained the same as the pretest showing that the driver has not been damaged





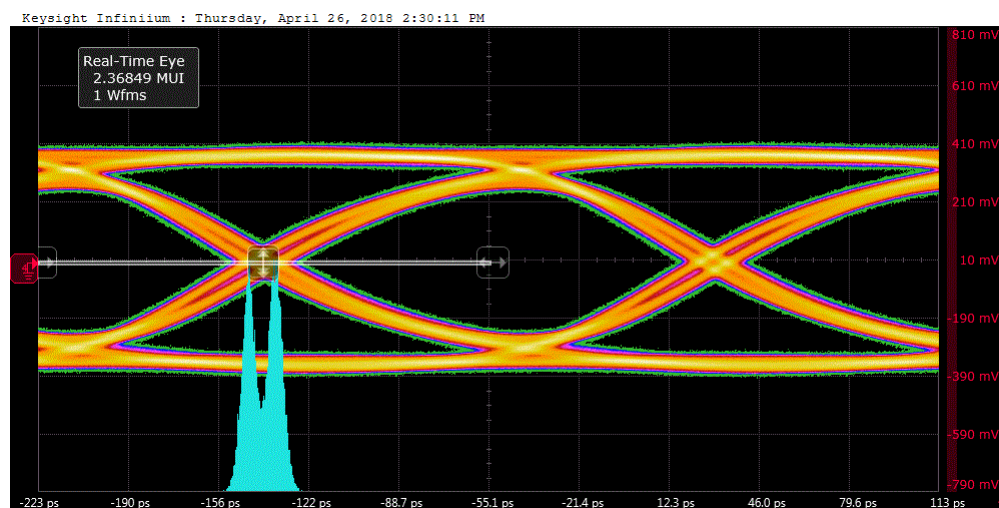
**Figure 22. +8 kV Clamping Waveform DP159 with ESD224 and CMC**



**Figure 23. -8 kV Clamping Waveform DP159 with ESD224 and CMC**

It is important to note that the reason the waveform seems more noisy than just with the ESD224 is because the CMC is acting like an inductor in the circuit. However, the clamping voltage at 30 ns shown in the waveform is still lower than the required voltage shown in [Figure 5](#). The board was then struck 10 times per the IEC61000-4-2 standard at one second intervals with  $\pm 12$  kV ESD to show the full protection of the ESD224. Afterwards it was ran back through the HDMI compliance shown in [Table 5](#).

The post test eye diagram for D2 TMDs line is shown in [Figure 24](#).



**Figure 24.  $\pm 12$  kV DP158 with ESD224 and CMC Post-test Eye Diagram**

As can be seen there is no change in the eye diagram from the pretest. Refer to the [Section 5](#) to compare pre and post tests results.

In conclusion, the ESD224 is capable of protecting sensitive HDMI drivers while not interfering normal operation. The ultra low clamping voltage on the system side allows HDMI drivers to not require such robust internal ESD designs. The 0.5 pF capacitance is low enough that with good layout it will easily pass the HDMI 2.0 data rates. Even with the introduction of a high speed CMC the ESD224 can still be used.

## 4 Design Files

### 4.1 Schematics

To download the schematics, see the design files at [TIDA-05001](#).

### 4.2 Bill of Materials

To download the bill of materials (BOM), see the design files at [TIDA-05001](#).

### 4.3 PCB Layout Recommendations

#### 4.3.1 Layout Prints

To download the layer plots, see the design files at [TIDA-05001](#).

### 4.4 Altium Project

To download the Altium Designer® project files, see the design files at [TIDA-05001](#).

### 4.5 Gerber Files

To download the Gerber files, see the design files at [TIDA-05001](#).

### 4.6 Assembly Drawings

To download the assembly drawings, see the design files at [TIDA-05001](#).

## 5 Full Test Results

Table 2 through Table 5 shows the full results from each of the Keysight's HDMI 2.0 Compliance tests.

**Table 2. Pretest HDMI 2.0 Compliance Results for TMDS181 with ESD224**

| PASS | Test Name   | Actual Value      | Margin  | Pass Limits                                    |
|------|---|-------------------|---------|--|
| Yes  | HF1-2: Clock Rise Time                            | 121.982 ps        | 62.60%  | VALUE >= 75.000 ps                             |
| Yes  | HF1-2: Clock Fall Time                            | 115.296 ps        | 53.70%  | VALUE >= 75.000 ps                             |
| Yes  | HF1-6: Clock Duty Cycle(Minimum)                  | 49.77             | 24.40%  | >=40%  |
| Yes  | HF1-6: Clock Duty Cycle(Maximum)                  | 49.99             | 16.70%  | <=60%  |
| Yes  | HF1-6: Clock Rate                                 | 148.499900000 MHz | 2.30%   | 85.000000000 MHz <= VALUE <= 150.000000000 MHz |
| Yes  | HF1-7: Differential Clock Voltage Swing, Vs (TP1) | 703 mV            | 37.90%  | 400 mV < VALUE < 1.200 V                       |
| Yes  | HF1-5: D0 Maximum Differential Voltage            | 499               | 36.00%  | VALUE <= 780 m                                 |
| Yes  | HF1-5: D0 Minimum Differential Voltage            | -521              | 33.2 %  | VALUE >= -780 m                                |
| Yes  | HF1-2: D0 Rise Time                               | 104.360 ps        | 145.60% | VALUE >= 42.500 ps                             |
| Yes  | HF1-2: D0 Fall Time                               | 96.940 ps         | 128.10% | VALUE >= 42.500 ps                             |
| Yes  | HF1-5: D1 Maximum Differential Voltage            | 477               | 38.80%  | VALUE <= 780 m                                 |
| Yes  | HF1-5: D1 Minimum Differential Voltage            | -449              | 42.4 %  | VALUE >= -780 m                                |
| Yes  | HF1-2: D1 Rise Time                               | 101.531 ps        | 138.90% | VALUE >= 42.500 ps                             |
| Yes  | HF1-2: D1 Fall Time                               | 87.482 ps         | 105.80% | VALUE >= 42.500 ps                             |

**Table 2. Pretest HDMI 2.0 Compliance Results for TMDS181 with ESD224 (continued)**

|     |  |           |         |                    |
|-----|--|-----------|---------|--------------------|
| Yes | HF1-5: D2 Maximum Differential Voltage | 491       | 37.10%  | VALUE <= 780 m     |
| Yes | HF1-5: D2 Minimum Differential Voltage | -480      | 38.5 %  | VALUE >= -780 m    |
| Yes | HF1-2: D2 Rise Time                    | 98.313 ps | 131.30% | VALUE >= 42.500 ps |

**Table 3. Post Test HDMI 2.0 Compliance Results for TMDS181 with ESD224**

| PASS | Test Name                              | Actual Value | Margin  | Pass Limits                          |
|------|--|--------------|---------|--------------------------------------|
| Yes  | HF1-5: D0 Maximum Differential Voltage | 501 m        | 35.80%  | VALUE <= 780 m                       |
| Yes  | HF1-5: D0 Minimum Differential Voltage | -516 m       | 33.8 %  | VALUE >= -780 m                      |
| Yes  | HF1-2: D0 Rise Time                    | 106.899 ps   | 151.50% | VALUE >= 42.500 ps                   |
| Yes  | HF1-2: D0 Fall Time                    | 102.079 ps   | 140.20% | VALUE >= 42.500 ps                   |
| Yes  | HF1-5: D1 Maximum Differential Voltage | 478 m        | 38.70%  | VALUE <= 780 m                       |
| Yes  | HF1-5: D1 Minimum Differential Voltage | -451 m       | 42.2 %  | VALUE >= -780 m                      |
| Yes  | HF1-2: D1 Rise Time                    | 105.920 ps   | 149.20% | VALUE >= 42.500 ps                   |
| Yes  | HF1-2: D1 Fall Time                    | 92.138 ps    | 116.80% | VALUE >= 42.500 ps                   |
| Yes  | HF1-5: D2 Maximum Differential Voltage | 489 m        | 37.30%  | VALUE <= 780 m                       |
| Yes  | HF1-5: D2 Minimum Differential Voltage | -467 m       | 40.1 %  | VALUE >= -780 m                      |
| Yes  | HF1-2: D2 Rise Time                    | 103.204 ps   | 142.80% | VALUE >= 42.500 ps                   |
| Yes  | HF1-2: D2 Fall Time                    | 100.198 ps   | 135.80% | VALUE >= 42.500 ps                   |
| Yes  | HF1-3: Inter-Pair Skew - D0/D1         | -6 mTpixel   | 48.5 %  | -200 mTpixel <= VALUE <= 200 mTpixel |
| Yes  | HF1-3: Inter-Pair Skew - D0/D2         | -28 mTpixel  | 43.0 %  | -200 mTpixel <= VALUE <= 200 mTpixel |
| Yes  | HF1-3: Inter-Pair Skew - D1/D2         | -23 mTpixel  | 44.3 %  | -200 mTpixel <= VALUE <= 200 mTpixel |

**Table 4. Pretest HDMI 2.0 Compliance Results for DP159 with ESD224 and CMC**

| Pass | Test Name   | Actual Value      | Margin | Pass Limits                                    |
|------|---|-------------------|--------|--|
| Yes  | HF1-2: Clock Rise Time                            | 125.299 ps        | 67.10% | VALUE >= 75.000 ps                             |
| Yes  | HF1-2: Clock Fall Time                            | 122.345 ps        | 63.10% | VALUE >= 75.000 ps                             |
| Yes  | HF1-6: Clock Duty Cycle(Minimum)                  | 49.77             | 24.40% | >=40%  |
| Yes  | HF1-6: Clock Duty Cycle(Maximum)                  | 49.99             | 16.70% | <=60%  |
| Yes  | HF1-6: Clock Rate                                 | 148.499500000 MHz | 2.30%  | 85.000000000 MHz <= VALUE <= 150.000000000 MHz |
| Yes  | HF1-7: Differential Clock Voltage Swing, Vs (TP1) | 813 mV            | 48.40% | 400 mV < VALUE < 1.200 V                       |
| Yes  | HF1-5: D0 Maximum Differential Voltage            | 485 m             | 37.80% | VALUE <= 780 m                                 |
| Yes  | HF1-5: D0 Minimum Differential Voltage            | -502 m            | 35.6 % | VALUE >= -780 m                                |
| Yes  | HF1-2: D0 Rise Time                               | 83.125 ps         | 95.60% | VALUE >= 42.500 ps                             |
| Yes  | HF1-2: D0 Fall Time                               | 76.774 ps         | 80.60% | VALUE >= 42.500 ps                             |

**Table 4. Pretest HDMI 2.0 Compliance Results for DP159 with ESD224 and CMC (continued)**

|     |  |           |         |                    |
|-----|--|-----------|---------|--------------------|
| Yes | HF1-5: D1 Maximum Differential Voltage | 426 m     | 45.40%  | VALUE <= 780 m     |
| Yes | HF1-5: D1 Minimum Differential Voltage | -401 m    | 48.6 %  | VALUE >= -780 m    |
| Yes | HF1-2: D1 Rise Time                    | 95.263 ps | 124.10% | VALUE >= 42.500 ps |
| Yes | HF1-2: D1 Fall Time                    | 89.026 ps | 109.50% | VALUE >= 42.500 ps |
| Yes | HF1-5: D2 Maximum Differential Voltage | 446 m     | 42.80%  | VALUE <= 780 m     |
| Yes | HF1-5: D2 Minimum Differential Voltage | -430 m    | 44.9 %  | VALUE >= -780 m    |
| Yes | HF1-2: D2 Rise Time                    | 90.850 ps | 113.80% | VALUE >= 42.500 ps |
| Yes | HF1-2: D2 Fall Time                    | 91.757 ps | 115.90% | VALUE >= 42.500 ps |

**Table 5. Post Test HDMI 2.0 Compliance Results for DP159 with ESD224 and CMC**

| Pass | Test Name   | Actual Value      | Margin  | Pass Limits                                    |
|------|---|-------------------|---------|--|
| Yes  | HF1-2: Clock Rise Time                            | 125.817 ps        | 67.80%  | VALUE >= 75.000 ps                             |
| Yes  | HF1-2: Clock Fall Time                            | 122.366 ps        | 63.20%  | VALUE >= 75.000 ps                             |
| Yes  | HF1-6: Clock Duty Cycle(Minimum)                  | 49.77             | 24.40%  | >=40%  |
| Yes  | HF1-6: Clock Duty Cycle(Maximum)                  | 49.99             | 16.70%  | <=60%  |
| Yes  | HF1-6: Clock Rate                                 | 148.499400000 MHz | 2.30%   | 85.000000000 MHz <= VALUE <= 150.000000000 MHz |
| Yes  | HF1-7: Differential Clock Voltage Swing, Vs (TP1) | 813 mV            | 48.40%  | 400 mV < VALUE < 1.200 V                       |
| Yes  | HF1-5: D0 Maximum Differential Voltage            | 492 m             | 36.90%  | VALUE <= 780 m                                 |
| Yes  | HF1-5: D0 Minimum Differential Voltage            | -494 m            | 36.7 %  | VALUE >= -780 m                                |
| Yes  | HF1-2: D0 Rise Time                               | 86.678 ps         | 103.90% | VALUE >= 42.500 ps                             |
| Yes  | HF1-2: D0 Fall Time                               | 79.564 ps         | 87.20%  | VALUE >= 42.500 ps                             |
| Yes  | HF1-5: D1 Maximum Differential Voltage            | 424 m             | 45.60%  | VALUE <= 780 m                                 |
| Yes  | HF1-5: D1 Minimum Differential Voltage            | -398 m            | 49.0 %  | VALUE >= -780 m                                |
| Yes  | HF1-2: D1 Rise Time                               | 102.296 ps        | 140.70% | VALUE >= 42.500 ps                             |
| Yes  | HF1-2: D1 Fall Time                               | 90.565 ps         | 113.10% | VALUE >= 42.500 ps                             |
| Yes  | HF1-5: D2 Maximum Differential Voltage            | 451 m             | 42.20%  | VALUE <= 780 m                                 |
| Yes  | HF1-5: D2 Minimum Differential Voltage            | -429 m            | 45.0 %  | VALUE >= -780 m                                |
| Yes  | HF1-2: D2 Rise Time                               | 90.854 ps         | 113.80% | VALUE >= 42.500 ps                             |
| Yes  | HF1-2: D2 Fall Time                               | 90.391 ps         | 112.70% | VALUE >= 42.500 ps                             |

## 6 Related Documentation

1. [ESD224 Datasheet](#)
2. [TMDS181RGZ Evaluation Module](#)
3. [TMDS181 Datasheet](#)
4. [DP159 Datasheet](#)
5. [IEC 61000-4-x Tests for TI's Protection Devices](#)
6. [TI ESD Protection Devices and the HDMI CTS](#)
7. [ESD Protection for HDMI Applications](#)

### 6.1 Trademarks

E2E is a trademark of Texas Instruments.

Altium Designer is a registered trademark of Altium LLC or its affiliated companies.

HDMI is a registered trademark of HDMI Licensing, LLC.

All other trademarks are the property of their respective owners.

## 7 About the Author

**CAMERON PHILLIPS** is an applications engineer at Texas Instruments where he is responsible for developing reference designs for TI's ESD and Surge portfolio. Cameron earned his bachelor of science in electrical engineering from Texas A&M University.

## IMPORTANT NOTICE FOR TI DESIGN INFORMATION AND RESOURCES

Texas Instruments Incorporated ("TI") technical, application or other design advice, services or information, including, but not limited to, reference designs and materials relating to evaluation modules, (collectively, "TI Resources") are intended to assist designers who are developing applications that incorporate TI products; by downloading, accessing or using any particular TI Resource in any way, you (individually or, if you are acting on behalf of a company, your company) agree to use it solely for this purpose and subject to the terms of this Notice.

TI's provision of TI Resources does not expand or otherwise alter TI's applicable published warranties or warranty disclaimers for TI products, and no additional obligations or liabilities arise from TI providing such TI Resources. TI reserves the right to make corrections, enhancements, improvements and other changes to its TI Resources.

You understand and agree that you remain responsible for using your independent analysis, evaluation and judgment in designing your applications and that you have full and exclusive responsibility to assure the safety of your applications and compliance of your applications (and of all TI products used in or for your applications) with all applicable regulations, laws and other applicable requirements. You represent that, with respect to your applications, you have all the necessary expertise to create and implement safeguards that (1) anticipate dangerous consequences of failures, (2) monitor failures and their consequences, and (3) lessen the likelihood of failures that might cause harm and take appropriate actions. You agree that prior to using or distributing any applications that include TI products, you will thoroughly test such applications and the functionality of such TI products as used in such applications. TI has not conducted any testing other than that specifically described in the published documentation for a particular TI Resource.

You are authorized to use, copy and modify any individual TI Resource only in connection with the development of applications that include the TI product(s) identified in such TI Resource. NO OTHER LICENSE, EXPRESS OR IMPLIED, BY ESTOPPEL OR OTHERWISE TO ANY OTHER TI INTELLECTUAL PROPERTY RIGHT, AND NO LICENSE TO ANY TECHNOLOGY OR INTELLECTUAL PROPERTY RIGHT OF TI OR ANY THIRD PARTY IS GRANTED HEREIN, including but not limited to any patent right, copyright, mask work right, or other intellectual property right relating to any combination, machine, or process in which TI products or services are used. Information regarding or referencing third-party products or services does not constitute a license to use such products or services, or a warranty or endorsement thereof. Use of TI Resources may require a license from a third party under the patents or other intellectual property of the third party, or a license from TI under the patents or other intellectual property of TI.

TI RESOURCES ARE PROVIDED "AS IS" AND WITH ALL FAULTS. TI DISCLAIMS ALL OTHER WARRANTIES OR REPRESENTATIONS, EXPRESS OR IMPLIED, REGARDING TI RESOURCES OR USE THEREOF, INCLUDING BUT NOT LIMITED TO ACCURACY OR COMPLETENESS, TITLE, ANY EPIDEMIC FAILURE WARRANTY AND ANY IMPLIED WARRANTIES OF MERCHANTABILITY, FITNESS FOR A PARTICULAR PURPOSE, AND NON-INFRINGEMENT OF ANY THIRD PARTY INTELLECTUAL PROPERTY RIGHTS.

TI SHALL NOT BE LIABLE FOR AND SHALL NOT DEFEND OR INDEMNIFY YOU AGAINST ANY CLAIM, INCLUDING BUT NOT LIMITED TO ANY INFRINGEMENT CLAIM THAT RELATES TO OR IS BASED ON ANY COMBINATION OF PRODUCTS EVEN IF DESCRIBED IN TI RESOURCES OR OTHERWISE. IN NO EVENT SHALL TI BE LIABLE FOR ANY ACTUAL, DIRECT, SPECIAL, COLLATERAL, INDIRECT, PUNITIVE, INCIDENTAL, CONSEQUENTIAL OR EXEMPLARY DAMAGES IN CONNECTION WITH OR ARISING OUT OF TI RESOURCES OR USE THEREOF, AND REGARDLESS OF WHETHER TI HAS BEEN ADVISED OF THE POSSIBILITY OF SUCH DAMAGES.

You agree to fully indemnify TI and its representatives against any damages, costs, losses, and/or liabilities arising out of your non-compliance with the terms and provisions of this Notice.

This Notice applies to TI Resources. Additional terms apply to the use and purchase of certain types of materials, TI products and services. These include; without limitation, TI's standard terms for semiconductor products (<http://www.ti.com/sc/docs/stdterms.htm>), [evaluation modules](#), and [samples](http://www.ti.com/sc/docs/sampterm.htm) (<http://www.ti.com/sc/docs/sampterm.htm>).

Mailing Address: Texas Instruments, Post Office Box 655303, Dallas, Texas 75265  
Copyright © 2018, Texas Instruments Incorporated