

Low-Power ADC Solution for CC13x2 and CC26x2

Mandus Börjesson

ABSTRACT

The 12-bit, analog-to-digital converter (ADC) peripheral block included in CC13x2 and CC26x2 devices, which is typically used by the Sensor Controller, requires the SCLK_HF signal, and is therefore not available in low-power (2 MHz) mode. The goal of this application note is to help users create an 8-bit, successive-approximation (SAR)-type, low-power, ADC using the CC13x2 and CC26x2 Sensor Controller running in 2-MHz mode. The comparator and digital-to-analog converter (DAC) peripherals are used to achieve a low-power ADC solution.

Contents

1	Introduction	2
2	Code Implementation in Sensor Controller Studio	3
3	Performance	5
Appendix A	Voltage Tracker	6

List of Figures

1	SAR ADC Block Diagram	2
2	SAR Operating Principle	2
3	1600 Samples of 100-Hz Sine Wave Sampled With Software-Implemented ADC	5
4	Digital Output Spectrum	5
5	Voltage Follower Output With (Top) and Without (Bottom) 8-Value Averaging	6

List of Tables

1	Software-Implemented SAR ADC Performance	5
2	Voltage Follower Current Consumption	7

1 Introduction

Figure 1 shows the four major blocks of the SAR ADC. The sample and hold (S/H) block *locks* the analog voltage level during sampling. The comparator compares the analog signal to the DAC output, which is controlled by the SAR logic block. The function of the SAR logic is replicated using the Sensor Controller.

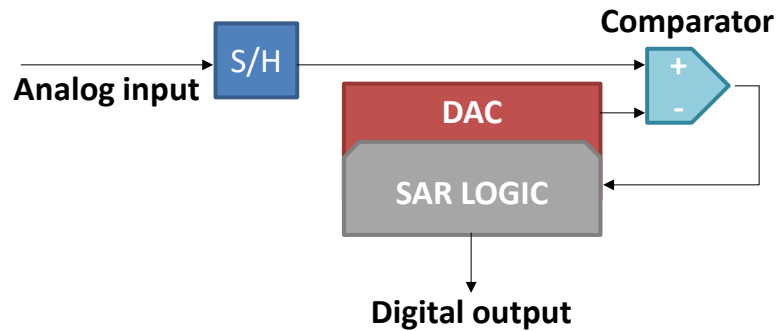


Figure 1. SAR ADC Block Diagram

As the name suggests, SAR ADCs try to predict the analog voltage using a comparator and a DAC. Figure 2 shows the workflow of a single, 5-bit, SAR, ADC sample. The DAC output is used as reference for the comparator and the analog voltage is the comparator input. Therefore, the comparator output tells if the input voltage is smaller or larger than the DAC output. Depending on the comparator output, the DAC output is increased or decreased by a step size that is half between iterations.

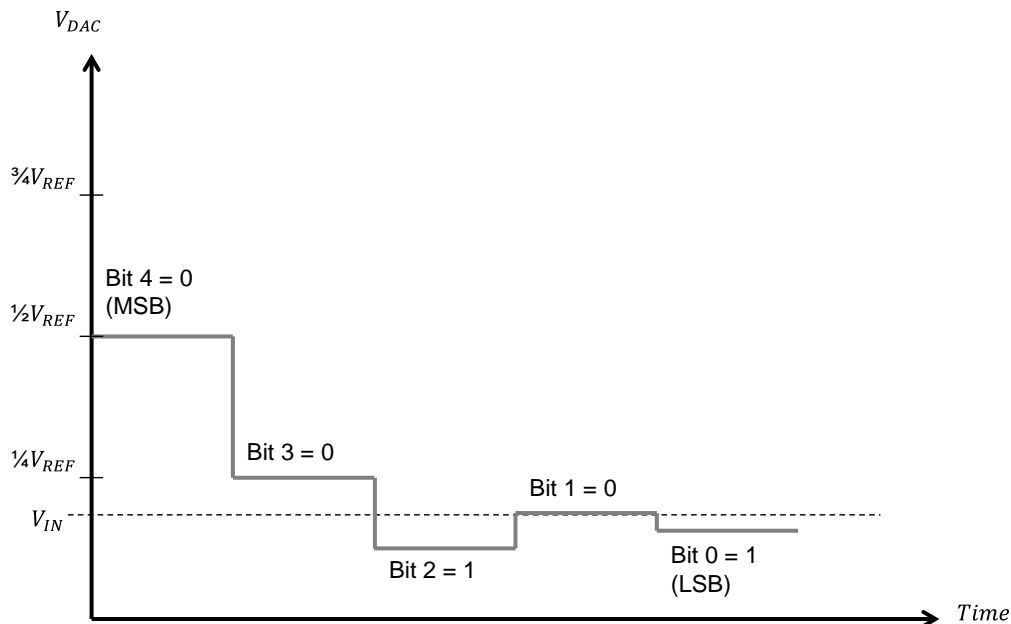


Figure 2. SAR Operating Principle

2 Code Implementation in Sensor Controller Studio

The following describes ADC code implementation in the Sensor Controller Studio.

Data members:

- cfg
 - resolution = 8
- output
 - value
- state
 - isLarger
 - nextVal

Task resources:

- Analog Pins
 - PIN_ANALOG
- COMPA
- Reference DAC
- RTC-Based Execution Scheduling
- Delay Insertion

Initialization Code

```
//Select SAR ADC input pin
compaSelectGpioInput(AUXIO_A_PIN_ANALOG);

fwScheduleTask(1);
```

Execution Code

```
//Enable comparator
compaEnable(COMPA_PWRMODE_ANY);

state.nextVal = 0x0080; // 1/2 VDD
output.value = 0;

//Set the reference DAC output to 1/2 VDD
refdacStartOutputOnCompaRef(state.nextVal);
refdacEnable(REFDAC_PWRMODE_ANY,REFDAC_REF_VDDS);

U16 currBit = cfg.resolution;
U16 step = 64;

while(currBit > 0){
//Update DAC value
refdacChangeOutputValue(state.nextVal);

//Wait for DAC to stabilize...
refdacWaitForStableOutput();

//An additional slight delay for DAC and comparator to stabilize...
fwDelayUs(10);

//Read comparator output
compaGetOutput(state.isLarger);

if(state.isLarger == 1){
state.nextVal += step; //Increase DAC value for next iteration
}else{
state.nextVal -= step; //Decrease DAC value for next iteration
}

step >>= 1; //Divide step by 2
currBit -= 1;

//Update output value
output.value |= (state.isLarger << currBit);
}

refdacStopOutput();
compaSelectIntRef(COMPA_REF_VSS);

//Disable peripherals
refdacDisable();
compaDisable();

fwScheduleTask(1);
```

Termination Code

```
//Disable peripherals
refdacDisable();
compaDisable();
```

3 Performance

The software-implemented ADC was tested by sampling a 100-Hz, 3-V, peak-to-peak, sine wave and calculating the effective number of bits (see [Figure 3](#)). One drawback of the software-implemented ADC is the lack of a sample/hold circuit, which results in a slight change of the signal during sampling. This results in a slight error in the lesser bits of the value. [Table 1](#) lists the measured performance of the ADC. [Figure 4](#) shows the digital output spectrum performance of the ADC implementation.

Table 1. Software-Implemented SAR ADC Performance

Current Consumption			
Sample frequency	1 Hz	20 Hz	100 Hz
Low-power, 2-MHz mode	0.9611 μ A	1.33147 μ A	2.9951 μ A
Active, 24-MHz mode	1.4509 μ A	4.9836 μ A	20.1072 μ A
Performance			
Maximum sampling rate	8.8 kHz		
Effective number of bits	6.3 bits		

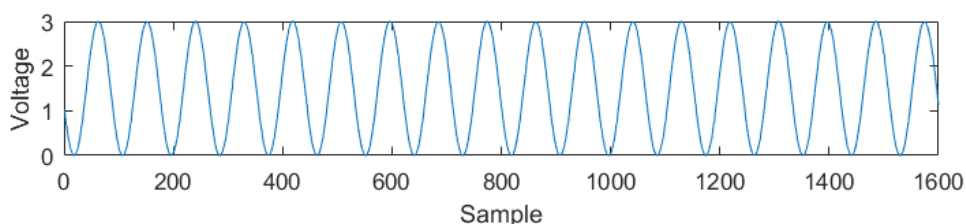


Figure 3. 1600 Samples of 100-Hz Sine Wave Sampled With Software-Implemented ADC

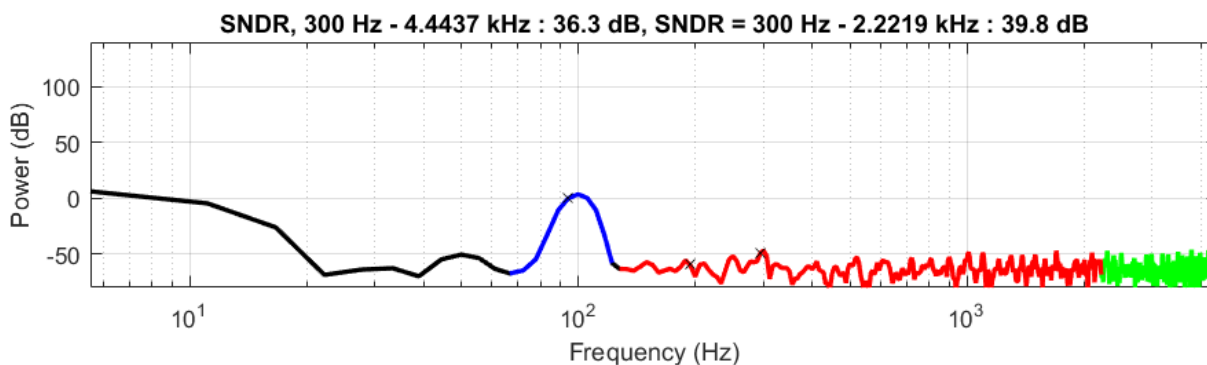


Figure 4. Digital Output Spectrum

Voltage Tracker

A.1 Overview

Because the software-implemented ADC was best suited for slow moving signals, due to the lack of a sample/hold circuit and the fairly low sampling rate, a tracking algorithm was attempted instead of the SAR logic, because it should consume less power and is still sufficient for sampling such signals.

A tracking ADC only reads the comparator output once upon waking up and tweaks the DAC output depending on the comparator output. If the DAC value is too low, the value is slightly increased and if it is too high, the value is slightly decreased. The stepping size is increased until the value has been found. The benefit of this algorithm is that the current consumption can be reduced, as compared to the SAR ADC, because the number of iterations each wakeup is reduced. The main drawback is that quick changes on the input signal may cause the algorithm to oscillate slightly before settling, as shown in Figure 5.

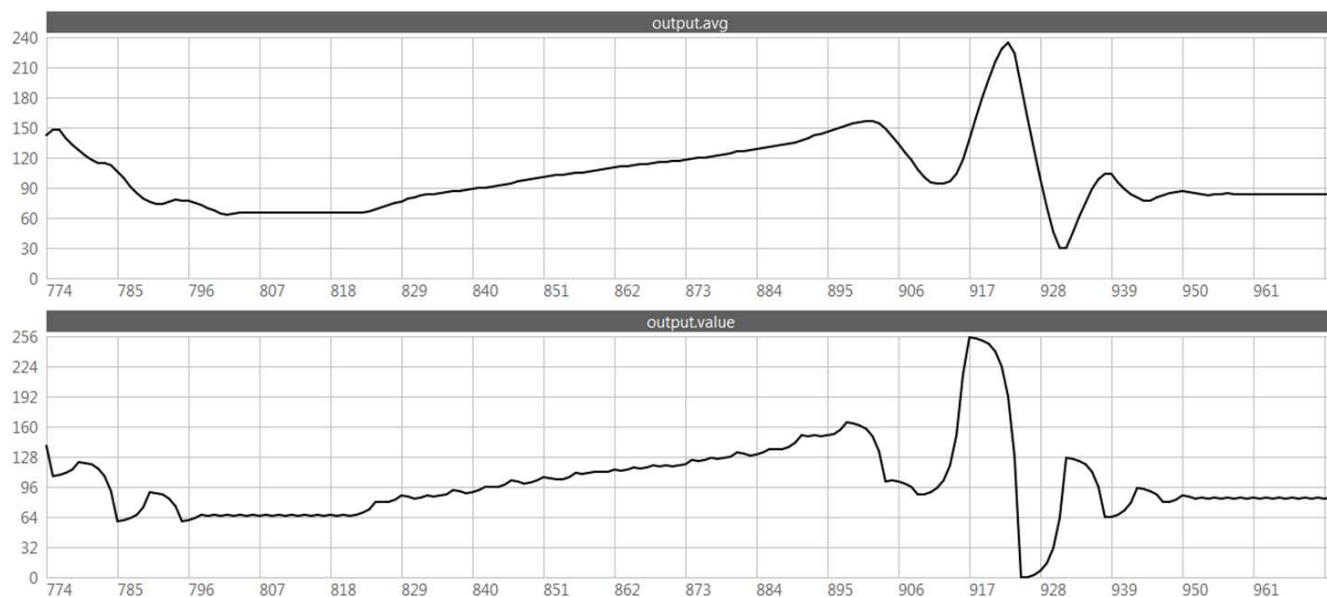


Figure 5. Voltage Follower Output With (Top) and Without (Bottom) 8-Value Averaging

[Table 2](#) lists the voltage follower current consumption.

Table 2. Voltage Follower Current Consumption

Current Consumption			
Sample frequency	1 Hz	20 Hz	100 Hz
Low-power, 2-MHz mode	0.9362 μ A	1.106 μ A	1.8208 μ A
Active, 24-MHz mode	1.4211 μ A	4.4244 μ A	17.6248 μ A
Low-power, 2-MHz mode with averaging	0.9539 μ A	1.1559 μ A	2.0091 μ A
Active, 24-MHz mode with averaging	1.4231 μ A	4.4847 μ A	18.0558 μ A

IMPORTANT NOTICE FOR TI DESIGN INFORMATION AND RESOURCES

Texas Instruments Incorporated ("TI") technical, application or other design advice, services or information, including, but not limited to, reference designs and materials relating to evaluation modules, (collectively, "TI Resources") are intended to assist designers who are developing applications that incorporate TI products; by downloading, accessing or using any particular TI Resource in any way, you (individually or, if you are acting on behalf of a company, your company) agree to use it solely for this purpose and subject to the terms of this Notice.

TI's provision of TI Resources does not expand or otherwise alter TI's applicable published warranties or warranty disclaimers for TI products, and no additional obligations or liabilities arise from TI providing such TI Resources. TI reserves the right to make corrections, enhancements, improvements and other changes to its TI Resources.

You understand and agree that you remain responsible for using your independent analysis, evaluation and judgment in designing your applications and that you have full and exclusive responsibility to assure the safety of your applications and compliance of your applications (and of all TI products used in or for your applications) with all applicable regulations, laws and other applicable requirements. You represent that, with respect to your applications, you have all the necessary expertise to create and implement safeguards that (1) anticipate dangerous consequences of failures, (2) monitor failures and their consequences, and (3) lessen the likelihood of failures that might cause harm and take appropriate actions. You agree that prior to using or distributing any applications that include TI products, you will thoroughly test such applications and the functionality of such TI products as used in such applications. TI has not conducted any testing other than that specifically described in the published documentation for a particular TI Resource.

You are authorized to use, copy and modify any individual TI Resource only in connection with the development of applications that include the TI product(s) identified in such TI Resource. NO OTHER LICENSE, EXPRESS OR IMPLIED, BY ESTOPPEL OR OTHERWISE TO ANY OTHER TI INTELLECTUAL PROPERTY RIGHT, AND NO LICENSE TO ANY TECHNOLOGY OR INTELLECTUAL PROPERTY RIGHT OF TI OR ANY THIRD PARTY IS GRANTED HEREIN, including but not limited to any patent right, copyright, mask work right, or other intellectual property right relating to any combination, machine, or process in which TI products or services are used. Information regarding or referencing third-party products or services does not constitute a license to use such products or services, or a warranty or endorsement thereof. Use of TI Resources may require a license from a third party under the patents or other intellectual property of the third party, or a license from TI under the patents or other intellectual property of TI.

TI RESOURCES ARE PROVIDED "AS IS" AND WITH ALL FAULTS. TI DISCLAIMS ALL OTHER WARRANTIES OR REPRESENTATIONS, EXPRESS OR IMPLIED, REGARDING TI RESOURCES OR USE THEREOF, INCLUDING BUT NOT LIMITED TO ACCURACY OR COMPLETENESS, TITLE, ANY EPIDEMIC FAILURE WARRANTY AND ANY IMPLIED WARRANTIES OF MERCHANTABILITY, FITNESS FOR A PARTICULAR PURPOSE, AND NON-INFRINGEMENT OF ANY THIRD PARTY INTELLECTUAL PROPERTY RIGHTS.

TI SHALL NOT BE LIABLE FOR AND SHALL NOT DEFEND OR INDEMNIFY YOU AGAINST ANY CLAIM, INCLUDING BUT NOT LIMITED TO ANY INFRINGEMENT CLAIM THAT RELATES TO OR IS BASED ON ANY COMBINATION OF PRODUCTS EVEN IF DESCRIBED IN TI RESOURCES OR OTHERWISE. IN NO EVENT SHALL TI BE LIABLE FOR ANY ACTUAL, DIRECT, SPECIAL, COLLATERAL, INDIRECT, PUNITIVE, INCIDENTAL, CONSEQUENTIAL OR EXEMPLARY DAMAGES IN CONNECTION WITH OR ARISING OUT OF TI RESOURCES OR USE THEREOF, AND REGARDLESS OF WHETHER TI HAS BEEN ADVISED OF THE POSSIBILITY OF SUCH DAMAGES.

You agree to fully indemnify TI and its representatives against any damages, costs, losses, and/or liabilities arising out of your non-compliance with the terms and provisions of this Notice.

This Notice applies to TI Resources. Additional terms apply to the use and purchase of certain types of materials, TI products and services. These include; without limitation, TI's standard terms for semiconductor products (<http://www.ti.com/sc/docs/stdterms.htm>), [evaluation modules](#), and [samples](http://www.ti.com/sc/docs/sampterm.htm) (<http://www.ti.com/sc/docs/sampterm.htm>).

Mailing Address: Texas Instruments, Post Office Box 655303, Dallas, Texas 75265
Copyright © 2018, Texas Instruments Incorporated