

# Voice Over Remote Control

Torbjorn Sorby

## ABSTRACT

This application report describes the voice over RF protocol used for Texas Instruments *Bluetooth*® low energy (BLE) and RF4CE remote control solutions.

## Contents

1	Introduction .....	2
---	--------------------	---

## List of Figures

1	CC2533 .....	3
2	CC2541 .....	3
3	CC2650 .....	3
4	RF4CE .....	4
5	BLE .....	4
6	Sequence Diagram .....	7

## List of Tables

1	Abbreviations and Acronyms .....	2
2	Start Frame .....	4
3	IMA-ADPCM Data Frame .....	5
4	Stop Frame .....	5
5	Raw PCM Data Frame .....	5
6	Start Frame .....	5
7	BLE ADPCM Data Frame Part #1/5 Frame .....	5
8	BLE ADPCM Data Frame Part #2/5 Frame .....	5
9	BLE ADPCM Data Frame Part #3/5 Frame .....	6
10	BLE ADPCM Data Frame Part #4/5 Frame .....	6
11	BLE ADPCM Data Frame Part #5/5 Frame .....	6
12	Stop Frame .....	6

## 1 Introduction

Sending voice data over a low-power wireless protocol enables multiple use cases, such as, voice recognition or baby monitoring. This application report presents the fundamental concepts of the voice implementation used in Texas Instruments BLE and RF4CE remote control solutions.

### 1.1 Main Features

- 16 kHz sampling rate, 16 bits resolution
- 4:1 compression perform on-chip
- Required throughput -- 64 kbps
- RF4CE application throughput up to 90 kbps
- BLE application throughput is higher than RF4CE and dependent on the system

#### 1.1.1 Abbreviations and Acronyms

**Table 1. Abbreviations and Acronyms**

BLE	Bluetooth Low Energy
FA	Frequency Agility
I2C	Inter-IC
I2S	Inter-IC Sound
IC	Integrated Circuit
IMA-ADPCM	Interactive Multimedia Association-Adaptive Differential Pulse Code Modulation
kbps	Kilo bits per second
LL	Link Layer
MAC	Medium Access Control
NWK	Network Layer
PDM	Pulse Density Modulation
RC	Remote Control
RF	Radio Frequency
RF4CE	Radio Frequency for Consumer Electronics
SPI	Serial Peripheral Interface

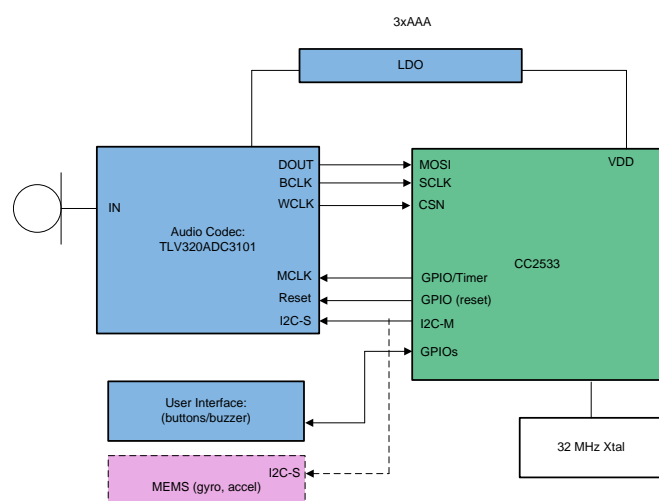
## 1.2 Solutions

### 1.2.1 Block Diagram

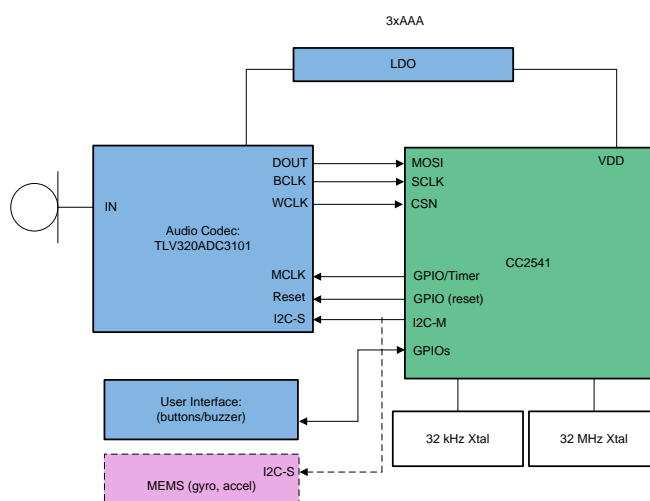
There are multiple devices available from Texas Instruments and [Figure 1](#) through [Figure 3](#) show the components used in the various voice enabled Remote Controllers.

In case of the CC25xx generation, an external codec is connected to an analog microphone. It is configured via inter-integrated circuit (I2C) and audio is retrieved via inter-IC sound (I2S). The master clock is provided by CC25xx, which also acts as an I2S slave. The I2S slave is implemented using the serial peripheral interface (SPI) module in slave operation, with a word clock connected to the chip select pin.

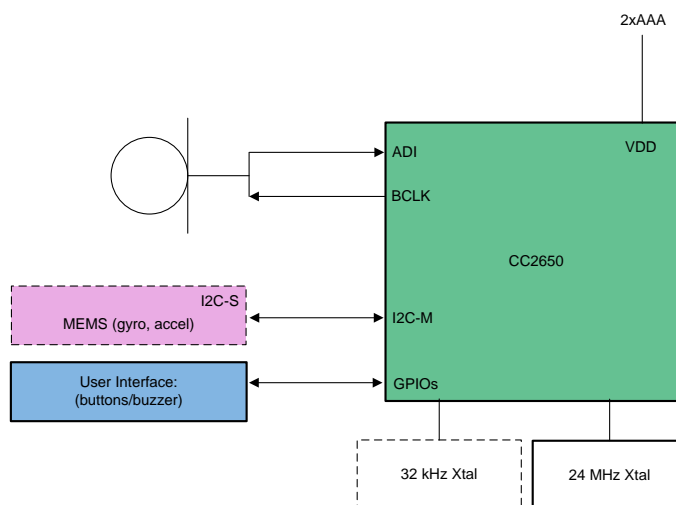
In the CC26xx devices, no external codec is required as the bit stream from a digital microphone can be read directly by the device, and the PDM stream can be processed in software.



**Figure 1. CC2533**



**Figure 2. CC2541**



**Figure 3. CC2650**

## 1.2.2 Audio Flow Diagram

Figure 4 and Figure 5 show various audio flows from the microphone via RF to speaker.

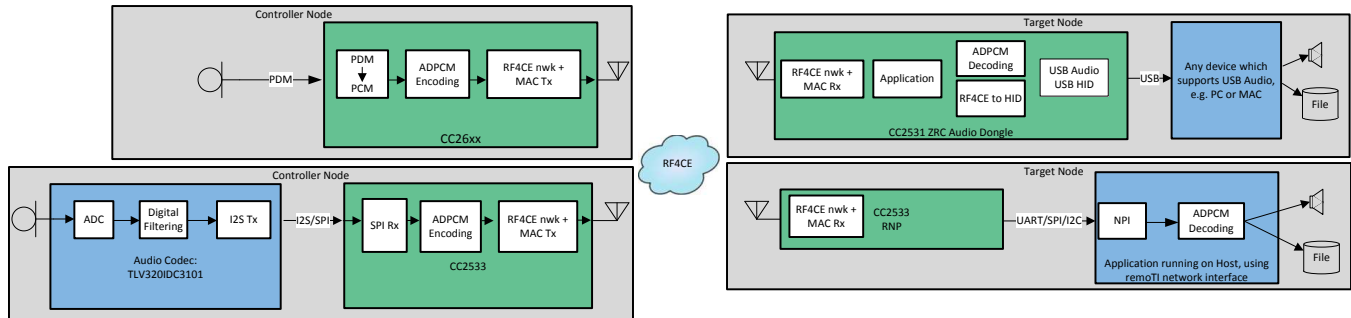


Figure 4. RF4CE

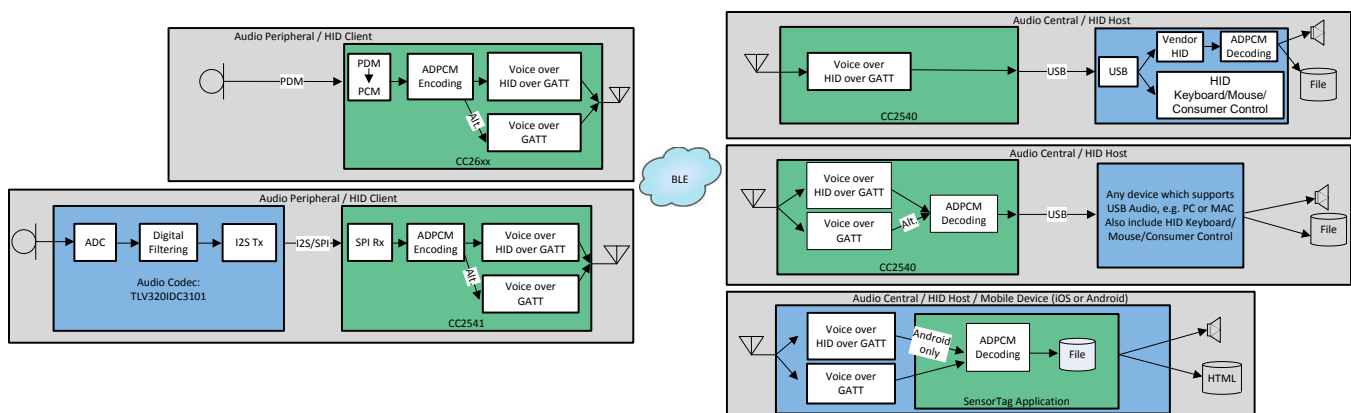


Figure 5. BLE

## 1.2.3 Audio Protocol

In order to transmit audio data over BLE or RF4CE, it is necessary to have a protocol in place. A protocol defines rules on how to interpret data. To save power, do not transmit audio continuously. As such, an audio stream has a finite beginning and end. In addition to indicating the audio data, the beginning of transmission can be identified as well as the end. This has the added benefit of allowing the recipient to prepare for an audio stream.

### 1.2.3.1 RF4CE

To improve rate, re-transmission on different channels can be removed, which is necessary to re-acquire channels in case they are changed mid-stream. Locking the RF channel removes this need.

For RF4CE, there is a very easy way to transmit your own vendor specific data, which is simply called vendor specific data transmission. Since there is no official protocol to transmit audio data, vendor specific data is used. Texas Instruments already defines several vendor specific data protocols, such as an Over-the-Air-Download protocol and a latency test protocol.

Table 2. Start Frame

Number of Bytes	1	1	1	1	1
Field	Protocol ID	CMD ID	Sample Frequency	Sample Width	Mode
	0x50	0x00	8: 8kHz 16: 16kHz	8, 12 or 16 bits	0: RAW 1: IMA-ADPCM

**Table 3. IMA-ADPCM Data Frame**

Number of Bytes	1	1	1	1	1	var
Field	Protocol ID	Seq No	ID	Header 1	Header 2	Header 3
	0x50	[7:3]	[2:0]			
		0-31	0x01			
						Audio Samples

**Table 4. Stop Frame**

Number of Bytes	1	1
Field	Prot/ocol ID	CMD ID
	0x50	0x02

**Table 5. Raw PCM Data Frame**

Number of Bytes	1	1	1	var
Field	Protocol ID	CMD ID	Seq No	Audio Samples
	0x50	0x03	0-255	16 bits LSB PCM

### 1.2.3.2 BLE

There is no standard way of transmitting audio via BLE. It is, however, quite simple to wrap the audio data into a vendor defined profile service. One such option is vendor defined characteristics where audio is transmitted over GATT. Another option is to wrap the audio data into vendor-specific HID profile service. The latter is preferred by those who are familiar with writing vendor specific HID report handlers. The performance is equal between the two options. The first byte in each of the following tables, Protocol ID, is only valid for RF4CE.

**Table 6. Start Frame**

Number of Bytes	1
Field	CMD ID
	0x04

**Table 7. BLE ADPCM Data Frame Part #1/5 Frame**

Number of Bytes	1	1	1	1	16
Field	Seq No	ID	Header 1	Header 2	Header 3
	[7:3]	[2:0]			
	0-31	0x01			
					Audio Samples

**Table 8. BLE ADPCM Data Frame Part #2/5 Frame**

Number of Bytes	20
Field	Audio Sample

**Table 9. BLE ADPCM Data Frame Part #3/5 Frame**

Number of Bytes	20
Field	Audio Sample

**Table 10. BLE ADPCM Data Frame Part #4/5 Frame**

Number of Bytes	20
Field	Audio Sample

**Table 11. BLE ADPCM Data Frame Part #5/5 Frame**

Number of Bytes	20
Field	Audio Sample

**Table 12. Stop Frame**

Number of Bytes	1
Field	<b>CMD ID</b>
	0x00

## 1.2.4 Sequence Diagram

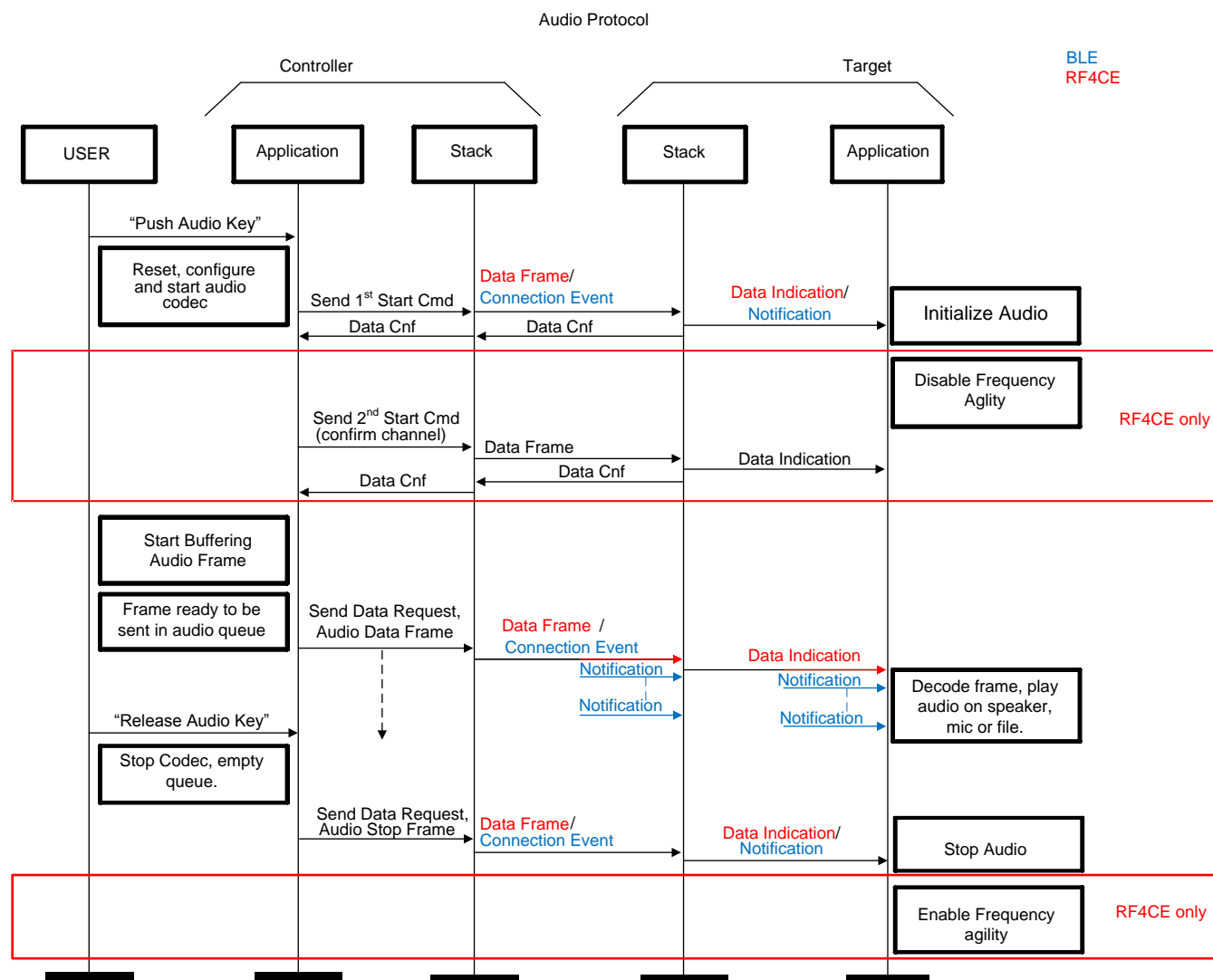


Figure 6. Sequence Diagram

## IMPORTANT NOTICE

Texas Instruments Incorporated and its subsidiaries (TI) reserve the right to make corrections, enhancements, improvements and other changes to its semiconductor products and services per JESD46, latest issue, and to discontinue any product or service per JESD48, latest issue. Buyers should obtain the latest relevant information before placing orders and should verify that such information is current and complete. All semiconductor products (also referred to herein as "components") are sold subject to TI's terms and conditions of sale supplied at the time of order acknowledgment.

TI warrants performance of its components to the specifications applicable at the time of sale, in accordance with the warranty in TI's terms and conditions of sale of semiconductor products. Testing and other quality control techniques are used to the extent TI deems necessary to support this warranty. Except where mandated by applicable law, testing of all parameters of each component is not necessarily performed.

TI assumes no liability for applications assistance or the design of Buyers' products. Buyers are responsible for their products and applications using TI components. To minimize the risks associated with Buyers' products and applications, Buyers should provide adequate design and operating safeguards.

TI does not warrant or represent that any license, either express or implied, is granted under any patent right, copyright, mask work right, or other intellectual property right relating to any combination, machine, or process in which TI components or services are used. Information published by TI regarding third-party products or services does not constitute a license to use such products or services or a warranty or endorsement thereof. Use of such information may require a license from a third party under the patents or other intellectual property of the third party, or a license from TI under the patents or other intellectual property of TI.

Reproduction of significant portions of TI information in TI data books or data sheets is permissible only if reproduction is without alteration and is accompanied by all associated warranties, conditions, limitations, and notices. TI is not responsible or liable for such altered documentation. Information of third parties may be subject to additional restrictions.

Resale of TI components or services with statements different from or beyond the parameters stated by TI for that component or service voids all express and any implied warranties for the associated TI component or service and is an unfair and deceptive business practice. TI is not responsible or liable for any such statements.

Buyer acknowledges and agrees that it is solely responsible for compliance with all legal, regulatory and safety-related requirements concerning its products, and any use of TI components in its applications, notwithstanding any applications-related information or support that may be provided by TI. Buyer represents and agrees that it has all the necessary expertise to create and implement safeguards which anticipate dangerous consequences of failures, monitor failures and their consequences, lessen the likelihood of failures that might cause harm and take appropriate remedial actions. Buyer will fully indemnify TI and its representatives against any damages arising out of the use of any TI components in safety-critical applications.

In some cases, TI components may be promoted specifically to facilitate safety-related applications. With such components, TI's goal is to help enable customers to design and create their own end-product solutions that meet applicable functional safety standards and requirements. Nonetheless, such components are subject to these terms.

No TI components are authorized for use in FDA Class III (or similar life-critical medical equipment) unless authorized officers of the parties have executed a special agreement specifically governing such use.

Only those TI components which TI has specifically designated as military grade or "enhanced plastic" are designed and intended for use in military/aerospace applications or environments. Buyer acknowledges and agrees that any military or aerospace use of TI components which have **not** been so designated is solely at the Buyer's risk, and that Buyer is solely responsible for compliance with all legal and regulatory requirements in connection with such use.

TI has specifically designated certain components as meeting ISO/TS16949 requirements, mainly for automotive use. In any case of use of non-designated products, TI will not be responsible for any failure to meet ISO/TS16949.

### Products

Audio	<a href="http://www.ti.com/audio">www.ti.com/audio</a>
Amplifiers	<a href="http://amplifier.ti.com">amplifier.ti.com</a>
Data Converters	<a href="http://dataconverter.ti.com">dataconverter.ti.com</a>
DLP® Products	<a href="http://www.dlp.com">www.dlp.com</a>
DSP	<a href="http://dsp.ti.com">dsp.ti.com</a>
Clocks and Timers	<a href="http://www.ti.com/clocks">www.ti.com/clocks</a>
Interface	<a href="http://interface.ti.com">interface.ti.com</a>
Logic	<a href="http://logic.ti.com">logic.ti.com</a>
Power Mgmt	<a href="http://power.ti.com">power.ti.com</a>
Microcontrollers	<a href="http://microcontroller.ti.com">microcontroller.ti.com</a>
RFID	<a href="http://www.ti-rfid.com">www.ti-rfid.com</a>
OMAP Applications Processors	<a href="http://www.ti.com/omap">www.ti.com/omap</a>
Wireless Connectivity	<a href="http://www.ti.com/wirelessconnectivity">www.ti.com/wirelessconnectivity</a>

### Applications

Automotive and Transportation	<a href="http://www.ti.com/automotive">www.ti.com/automotive</a>
Communications and Telecom	<a href="http://www.ti.com/communications">www.ti.com/communications</a>
Computers and Peripherals	<a href="http://www.ti.com/computers">www.ti.com/computers</a>
Consumer Electronics	<a href="http://www.ti.com/consumer-apps">www.ti.com/consumer-apps</a>
Energy and Lighting	<a href="http://www.ti.com/energy">www.ti.com/energy</a>
Industrial	<a href="http://www.ti.com/industrial">www.ti.com/industrial</a>
Medical	<a href="http://www.ti.com/medical">www.ti.com/medical</a>
Security	<a href="http://www.ti.com/security">www.ti.com/security</a>
Space, Avionics and Defense	<a href="http://www.ti.com/space-avionics-defense">www.ti.com/space-avionics-defense</a>
Video and Imaging	<a href="http://www.ti.com/video">www.ti.com/video</a>

### TI E2E Community

[e2e.ti.com](http://e2e.ti.com)