

## **BOOSTXL-DRV8323Rx EVM User's Guide**

This document is provided with the BOOSTXL-DRV8323Rx customer evaluation module (EVM) as a supplement to the DRV8323Rx data sheet ([DRV832x 6 to 60-V Three-Phase Smart Gate Driver](#)). This user's guide details the hardware implementation of the EVM and how to install the various software packages.

---

**IMPORTANT:** As of 1 May 2017, all BOOSTXL-DRV8323RH EVMs with a MDBU017 A number have an SO offset that does not meet the value specified in the data sheet. All other EVMs with a MDBU017 letter greater than A meet the SO offset specification in the data sheet.

---

### **Contents**

1	Introduction .....	3
1.1	Overview .....	3
1.2	Purpose and Scope .....	3
2	Hardware and Software Overview.....	4
2.1	Hardware Connections Overview – DRV8323Rx + MSP430F5529 .....	4
2.2	Connection Details.....	5
2.3	LED Lights and Switch Functions .....	7
2.4	Interfacing DRV8323Rx and MSP430F5529 LaunchPad .....	8
3	Firmware Installation .....	9
3.1	Installing Code Composer Studio.....	9
3.2	Installing DRV832X Reference Software Development Package.....	12
3.3	Creating or Importing a DRV8x Project into CCS.....	16
3.4	Updating the MSP430 USB-FET .....	19
4	GUI Application .....	20
4.1	Installation .....	20
4.2	Hardware Setup .....	21
4.3	Launching BOOSTXL-DRV832X EVM GUI.....	22

### **List of Figures**

1	Block Diagram.....	3
2	Hardware Connections Overview.....	4
3	Connections .....	5
4	Jumper Connections 1 .....	6
5	Jumper Connections 2 .....	6
6	Micro-USB Connection.....	7
7	Switches and LED Functions.....	7
8	Downloaded Executable for Code Composer Studio Installation .....	9
9	CCS License Agreement .....	10
10	Default Installation Location for CCS .....	10
11	Processors Supported by CCS.....	11
12	Components Available for Installation .....	11
13	Emulators Available for Installation .....	12
14	DRV832XX EVM Firmware Executable File .....	12
15	Language Selection.....	12

16	Setup Home Screen .....	13
17	DRV832XX Software License Agreement .....	13
18	Setup Destination Folder .....	14
19	Select Setup Components .....	14
20	Warning Message to Close CCS.....	15
21	Firmware Setup Complete .....	15
22	Workspace Launcher .....	16
23	Importing Existing Projects.....	16
24	Selecting Existing Projects .....	17
25	DRV832x Project Explorer .....	17
26	Build Project Files Buttons .....	17
27	Execute Buttons .....	18
28	Flashing Firmware .....	18
29	New CCS Project .....	19
30	Error Initializing Emulator .....	20
31	Updating LaunchPad development kit Firmware.....	20
32	TI MSP430 USB Installer.....	21
33	BOOSTXL-DRV832X EVM Device Launch.....	22

#### List of Tables

1	Fault Status.....	8
2	BOOSTXL-DRV8323Rx J3 Pin Connections .....	8
3	BOOSTXL-DRV8323RX J4 Pin Connections .....	9

#### Trademarks

LaunchPad, Code Composer Studio, BoosterPack, MSP430 are trademarks of Texas Instruments.  
All other trademarks are the property of their respective owners.

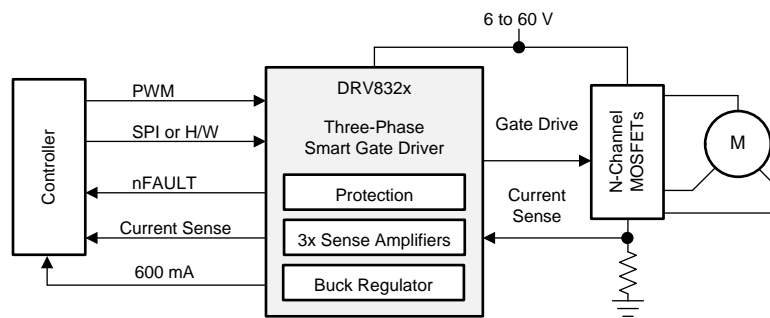
## 1 Introduction

### 1.1 Overview

The DRV8323Rx is a gate driver IC for three phase motor drive applications. It provides three high-accuracy trimmed and temperature compensated half bridge drivers, each capable of driving a high-side and low-side N-type MOSFET.

Both SPI and hardware interface variants provide detailed fault reporting and flexible parameter settings such as current control options for slow rate control of the gate drivers and various protection features.

Along with the hardware of DRV8323Rx, the MSP430F5529 microcontroller has loaded reference software that provides the necessary gating pulses to DRV8323Rx to control the BLDC motors.



Copyright © 2017, Texas Instruments Incorporated

**Figure 1. Block Diagram**

### 1.2 Purpose and Scope

This document is designed to be used as a startup guide and to supplement the DRV832X + MSP430F5529 BLDC motor control demo code kit. This document is intended for the engineers involved in the design, implementation, and validation of DRV832X + MSP430F5529 reference software.

The scope of this document is to provide the user with a guide to evaluate the DRV8323Rx device with an MSP430F5529 LaunchPad™ development kit. This document covers the hardware connections required between DRV8323Rx and the LaunchPad development kit. When the HW connections are complete, the user is required to download the necessary tools and SW to spin a motor. For step-by-step details to install Code Composer Studio™ (CCS) software, import the DRV832xx project into CCS, build the project, debug the project and spin the motor, refer to [Section 3](#).

This reference SW comprises trapezoidal sensed and sensorless algorithms for BLDC motor control. For additional information on these algorithms, refer to [DRV832XX EVM Sensed Software User's Guide](#) and [DRV832XX EVM Sensorless Software User's Guide](#)

## 2 Hardware and Software Overview

### 2.1 Hardware Connections Overview – DRV8323Rx + MSP430F5529

Figure 2 shows the major blocks of the hardware where the BOOSTXL-DRV8323Rx BoosterPack™ plug-in module is mounted on the MSP430F5529 XL LaunchPad development kit. The BOOSTXL-DRV8323Rx is designed for an input supply from 6 to 54 V and up to 15-A drive current. Three half h-bridges capable of driving a three-phase BLDC motor implementing sensed or sensorless control. Hall sensor pins a, b, c are connected to pins P2.0, P2.2, and P2.6 of the MSP430™ MCU respectively. The 3.3-V supply to the Hall sensors is derived by the LMR16006XDDCR buck converter integrated in the DRV8323Rx.

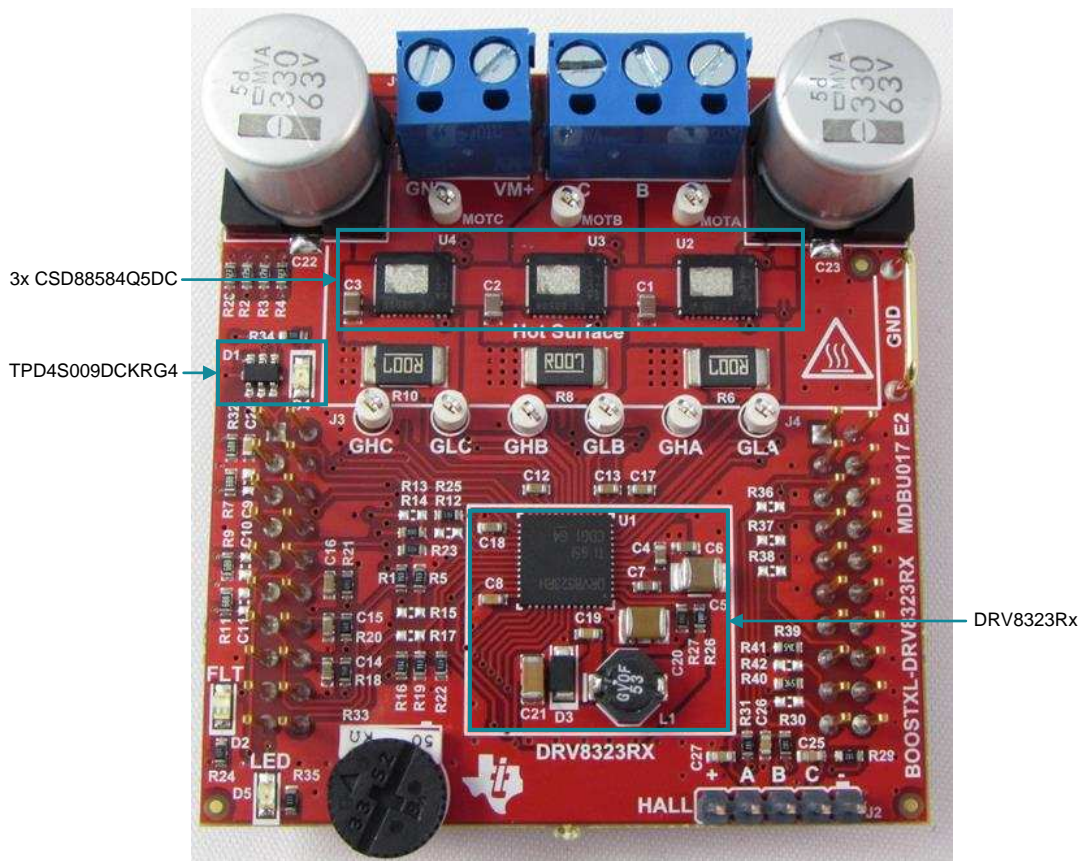


Figure 2. Hardware Connections Overview

## 2.2 Connection Details

Figure 3 shows the power connector and motor phase connector. A supply voltage ranging from 6 to 54 V from a battery or a DC voltage source is connected to the voltage supply pins. Three phases of the BLDC motor are connected to the three-phase motor socket provided on the BOOSTXL-DRV8323Rx.

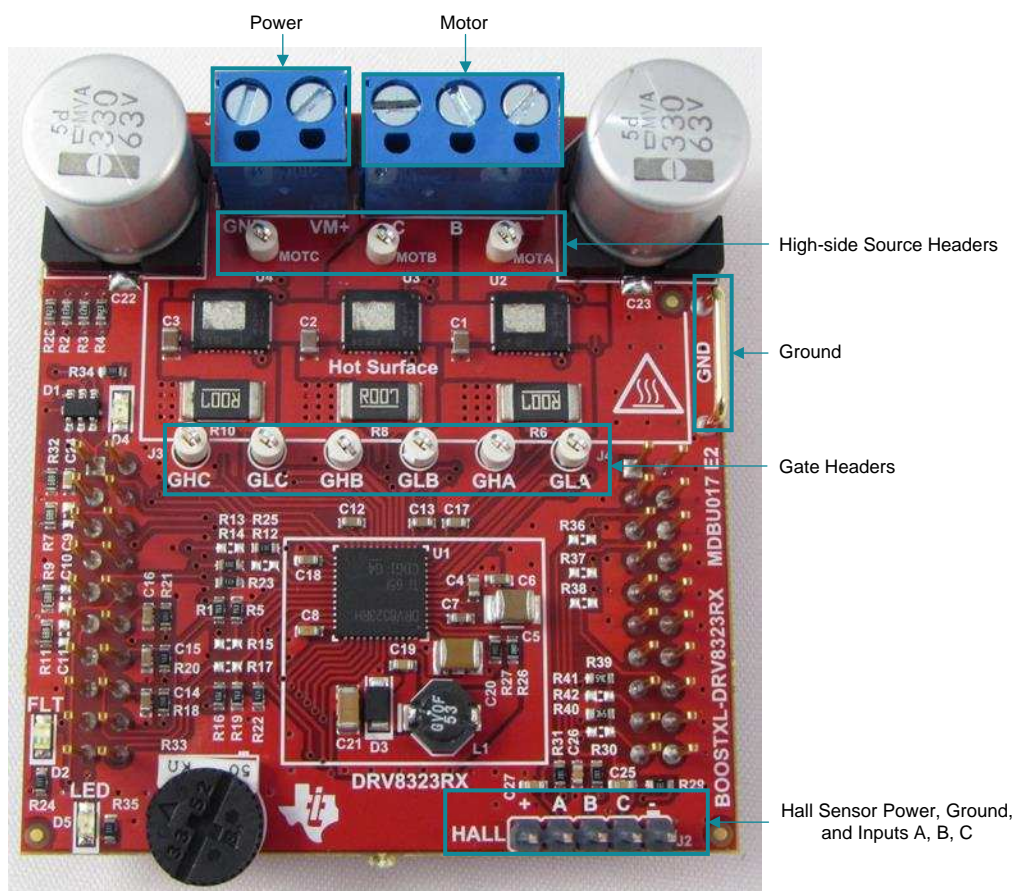


Figure 3. Connections

Figure 4 and Figure 5 show the jumper pin connections required for the proper functioning of the software.



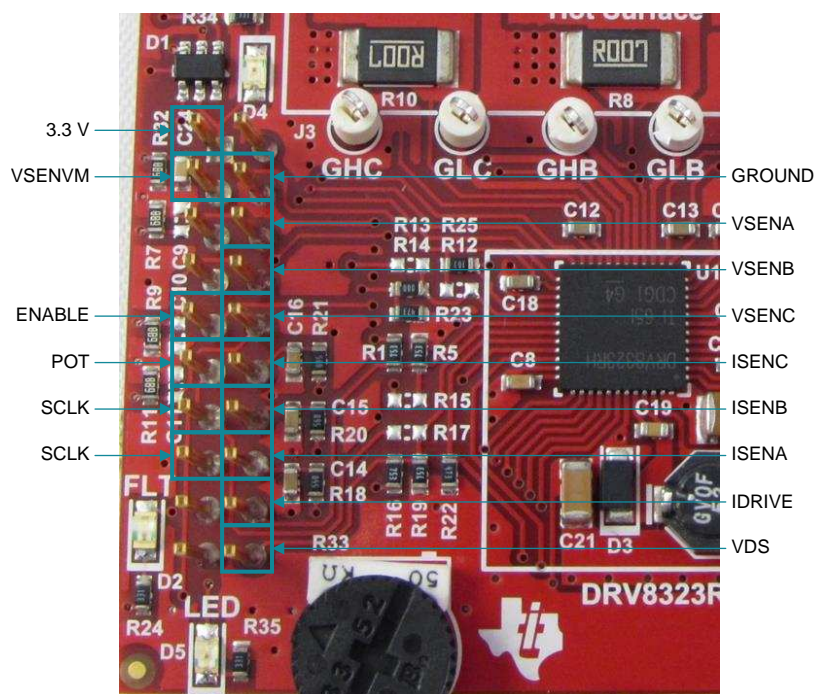


Figure 4. Jumper Connections 1

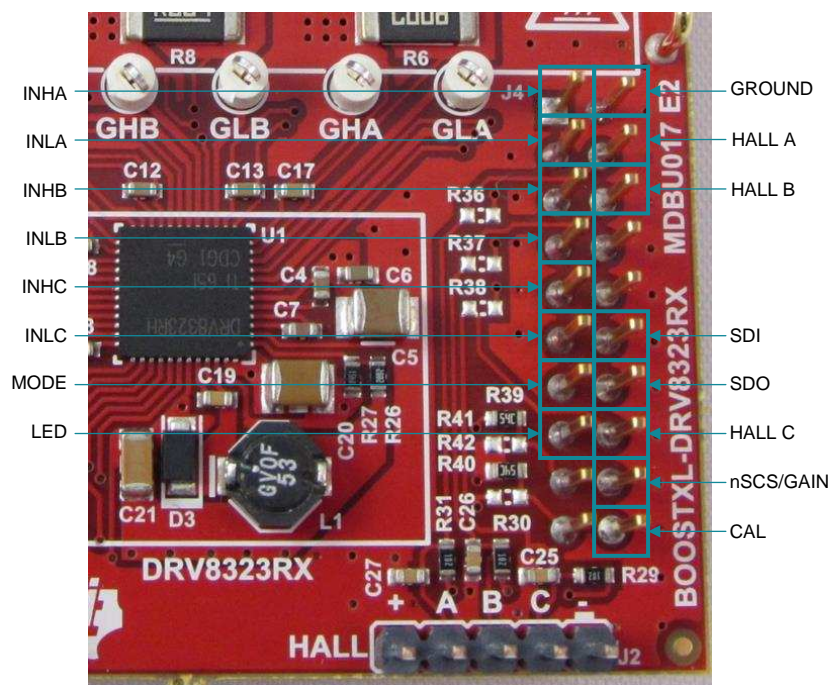


Figure 5. Jumper Connections 2

Figure 6 shows where the Micro-USB cable is plugged in to power the LaunchPad development kit and provide communication between the MSP430F5529 firmware and GUI.

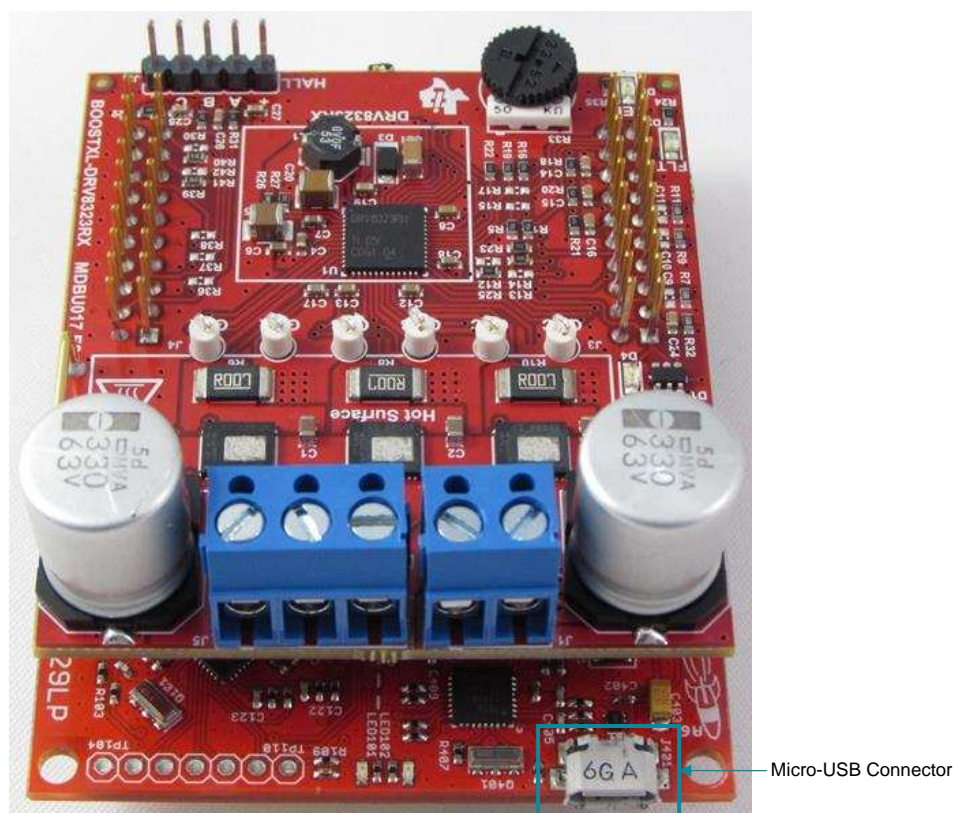


Figure 6. Micro-USB Connection

## 2.3 LED Lights and Switch Functions

Two LEDs and two push button switches are available on the MSP430F5529 LaunchPad development kit to notify the user of different motor statuses and to control the operation of the motor. These switches are configured in the reference software and preloaded with the following functions:

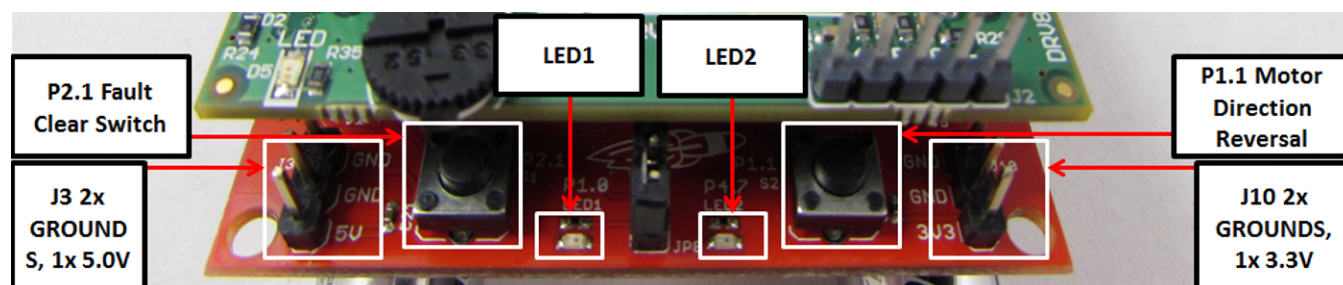


Figure 7. Switches and LED Functions

**P1.1 switch (motor direction reversal)** — This switch allows user to toggle the direction of motor spin either to be clockwise or counterclockwise rotation.

**P2.1 switch (fault clear switch)** — This switch is configured to clear the fault status in SPI registers and to restart the motor. When the user does not want automatic fault recovery when a fault occurs, it can be turned off in the parameter setup file. In such cases, this button helps in restarting motor after successful identification and mitigation of fault.

**LED1 and LED2** — During normal motor operations LED1 and LED2 define the direction of spin. When any fault occurs, LED1 and LED2 flashes in different patterns to identify the fault. [Table 1](#) describes the patterns observed with different fault conditions.

**Table 1. Fault Status**

Fault Status	LED 1	LED 2
Voltage	Toggle	Toggle
Motor stall	ON	Toggle
Overcurrent	Toggle	ON
Overtemperature	ON	OFF
Gate driver	ON	ON
Other	OFF	OFF
Hall sensor invalid (Sensored)	OFF	ON

## 2.4 Interfacing DRV8323Rx and MSP430F5529 LaunchPad

The DRV8323Rx device has 40 pins with different functions. These pins are interfaced with the MSP430F5529XL LaunchPad development kit which is mapped appropriately to receive the functionality of the BoosterPack plug-in module. These 40 pins are grouped into 4 ports. [Table 2](#) and [Table 3](#) list the interfacing of these ports with the MSP430F5529 device.

**Table 2. BOOSTXL-DRV8323Rx J3 Pin Connections**

J3 Pin Number	BOOSTXL-DRV8323Rx Function	MSP430F5529 Function	Description
1	3.3 V	3.3 V	3.3 V LaunchPad supply
2	No function	5 V	5 V supply
3	VSENV	P6.5, ADC channel – A5	Sensing VCC supply voltage
4	GND	GND	ADC - GND connections
5	No function	P3.4, I/O PIN	Software debug pins(optional)
6	VSENA	P6.0, ADC channel – 0	Sensing A phase voltage
7	No function	P3.3, I/O PIN	Software debug pins(optional)
8	VSENB	P6.1, ADC channel – 1	Sensing B phase voltage
9	ENABLE	P1.6, I/O pin with Interrupt	Logic low to enter a low-power sleep mode
10	VSENC	P6.2, ADC channel – 2	Sensing C phase voltage
11	POT	P6.6, ADC channel – A6	Optional POT to vary the voltage 0-3.3 V on pin
12	ISENC	P6.3, ADC channel – 3	Sensing C phase current
13	SCLK	P3.2,UCBOCLK – SPI CLK	Secondary function for pin SPI CLK
14	ISENB	P6.4, ADC channel – 4	Sensing B phase current
15	NFAULT	P2.7, I/O pin with Interrupt	Pulled logic low during a fault condition
16	ISENA	P7.0, ADC channel – 12	Sensing A phase current
17	No function	P4.2, I/O pin	Software debug pins (optional)
18	IDRIVE	P3.6, I/O pin	Sets gate drive peak current, 7-level input pin (DRV8323RH devices only)
19	No function	P4.1, I/O pin	Software debug pins(optional)
20	VDS	P3.5, I/O pin	Sets VDS monitor threshold voltage, 7-level input pin (DRV8323RH devices only)



**Table 3. BOOSTXL-DRV8323RX J4 Pin Connections**

J4 Pin Number	BOOSTXL-DRV8323Rx Function	MSP430F5529 Function	Description
1	INHA	P2.5, TA2.2	Secondary function, Timer 2 comparator output to generate PWM for A phase high-side switches
2	GND	GND	ADC - GND connections
3	INLA	P2.4, TA2.1	Secondary function, Timer 2 comparator output to generate PWM for A phase low-side switches
4	HALLA	P2.0, SPI enable	Hall sensor A from motor
5	INHB	P1.5, TA0.4	Secondary function, Timer 1 comparator output to generate PWM for B phase high-side switches
6	HALLB	P2.2, I/O PIN with Interrupt	Hall sensor B from motor
7	INLB	P1.4, TA0.3	Secondary function, Timer 1 comparator output to generate PWM for B phase low-side switches
8	No function	P7.4, I/O pin	No function
9	INHC	P1.3, TA0.2	Secondary function, Timer 1 comparator output to generate PWM for C phase high-side switches
10	No function	RST	No function
11	INLC	P1.2, TA0.1	Secondary function, Timer 1 comparator output to generate PWM for C phase low-side switches
12	SDI	P3.0,UCBOSIMO	Secondary function for data input to DRV832xx
13	MODE	P4.3, I/O pin	Sets the input control mode, 4-level input pin (DRV8323RH devices only)
14	SDO	P3.1,UCBOSOMI	Secondary function for data output from DRV832xx
15	LED	P4.0, I/O pin	Visual feedback for faults.
16	HALLC	P2.6, I/O pin With Interrupt	Hall sensor C from motor enable the gate driver and current shunt amplifiers
17	EVM ID	P3.7, I/O pin	Pulled low for DRV8320x, high for DRV8323x devices
18	nSCS/GAIN	P2.2, I/O PIN with Interrupt	Active low enables serial interface communication Sets the gain of the shunt amplifiers, 4-level input pin (DRV8323RH devices only)
19	EVM ID	P8.2, I/O pin	Pulled low for DRV832xH, high for DRV832xS devices
20	CAL	P8.1, I/O pin	Pull logic high to internally short all amplifier inputs together

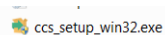
## 3 Firmware Installation

### 3.1 Installing Code Composer Studio

CCS versions 5.x.x and 6.x.x have been used and tested for DRV832XX reference code. An authorized version can be installed from [www.ti.com/tool/ccstudio](http://www.ti.com/tool/ccstudio).

**NOTE:** A myTI login account is required to download CCS as well as the SDK package. This section describes the installation procedure for CCS5.4; however, installing other versions of CCS v5.x including CCS v6.x is similar.

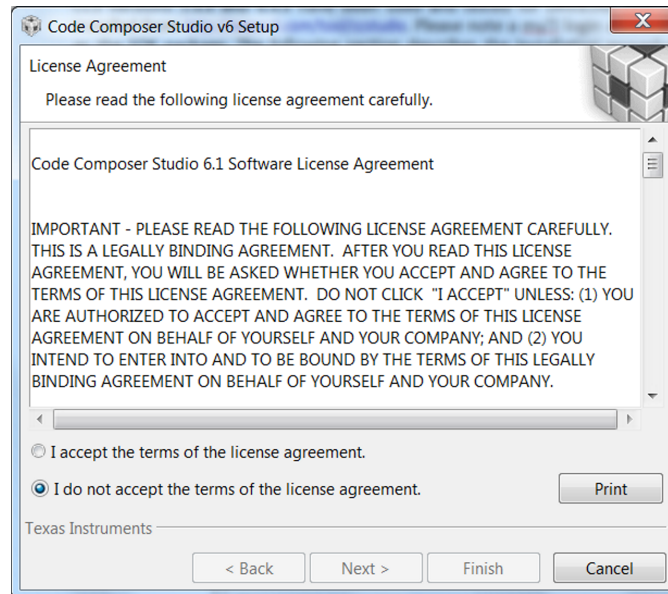
After following the required steps to download the CCS installer, the ccs\_setup\_5.4.0.00091.exe file should be located in the specified download directory. [Figure 8](#) shows this file.


**Figure 8. Downloaded Executable for Code Composer Studio Installation**

Follow the installation process listed:

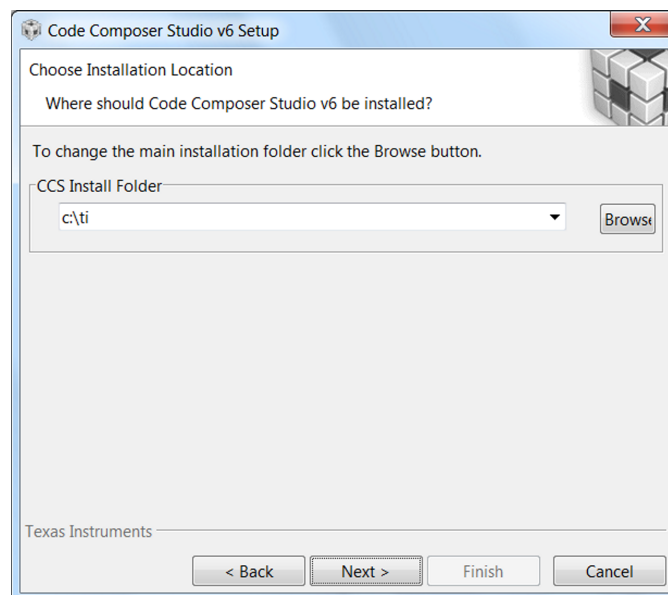
Step 1. Run the installer by double clicking the ccs\_setup\_win32.exe file.

- Step 2. Read through and accept the license agreement to proceed with the installation (see [Figure 9](#)).



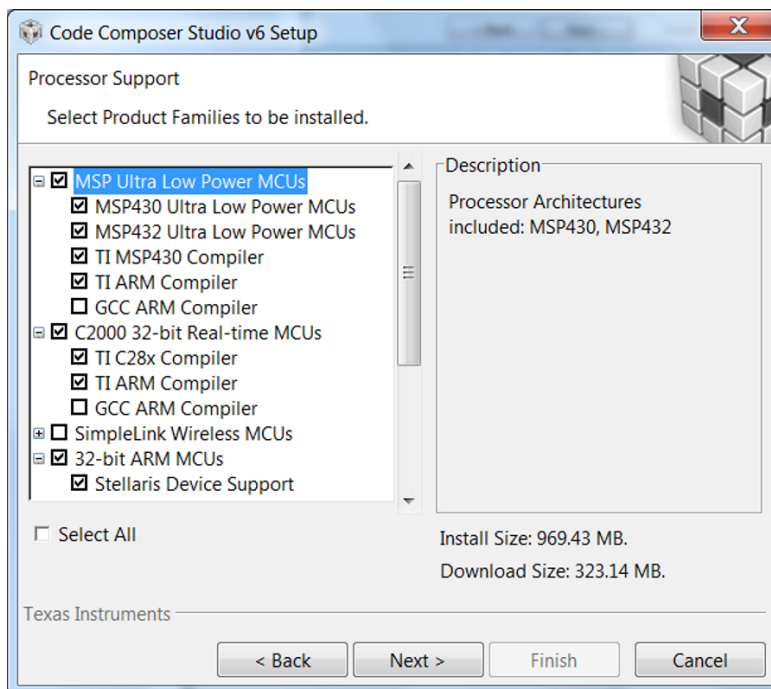
**Figure 9. CCS License Agreement**

- Step 3. Choose a destination directory. Using the default (c:\ti) removes a step in the SDK installation procedure (see [Figure 10](#)).



**Figure 10. Default Installation Location for CCS**

- Step 4. Choose the processor architectures to install (see [Figure 11](#)).  
For the DRV83xx, the MSP430 and C28x are the only needed processor packages. The compiler tools are required. Ensure that the box for the *TI MSP430 Compiler Tool* is checked.

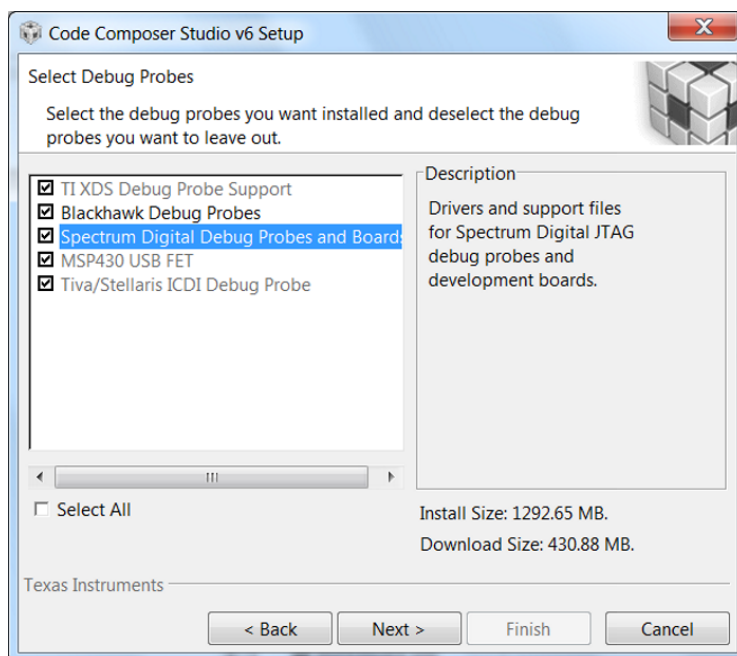


**Figure 11. Processors Supported by CCS**

Step 5. Select the emulator components to install.

For the provided tool, the MSP430 USB FET emulator is required.

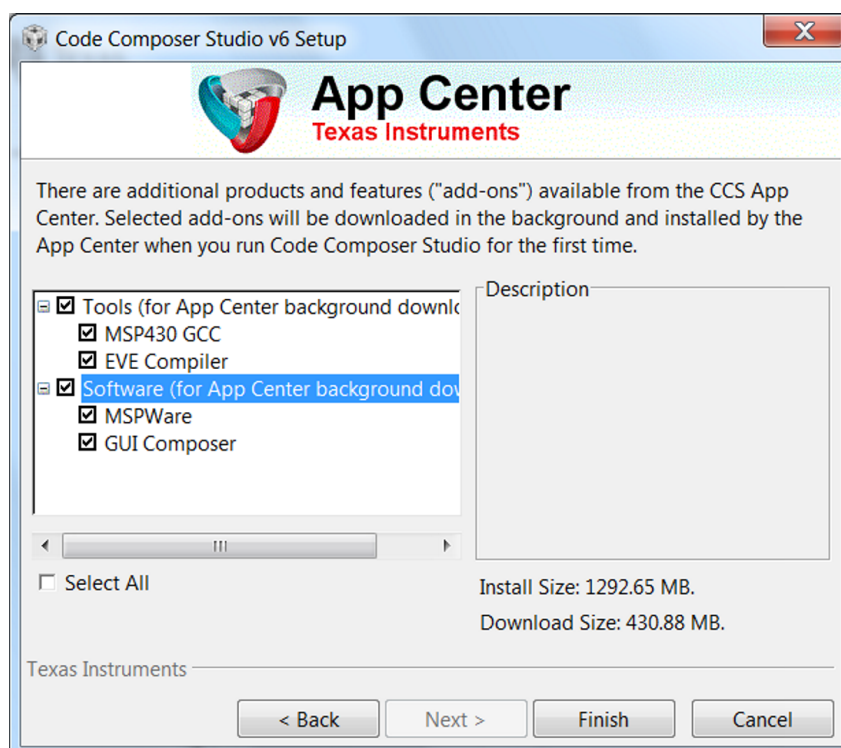
Step 6. Review the installation size and click the *finish* button to begin installation of the CCS software (see [Figure 12](#)).



**Figure 12. Components Available for Installation**

Step 7. Choose add-on software (this step is optional).

Step 8. Review the installation and click the *Finish* button to finalize (see [Figure 13](#)).



**Figure 13. Emulators Available for Installation**

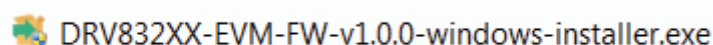
Step 9. After the installation has completed, click the *Finish* button to exit the set-up.

## 3.2 Installing DRV832X Reference Software Development Package

The DRV832X Reference software contains the files required to program DRV832X devices along with the MSP430F5529 using CCS v5.x or CCS v6.x. All of these files are included in the installation package. To download this package, go to the respective EVM tool page on [TI.com](http://ti.com) ( [BOOSTXL-DRV8323RH](#) or [BOOSTXL-DRV8323RS](#) ).

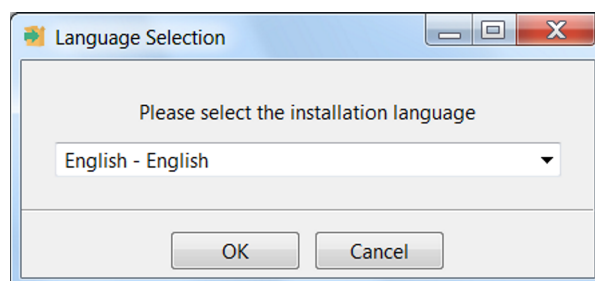
To instal of the reference software development package, follow these steps:

- Step 1. Double click the executable file (.exe) for the DRV832XX reference software installer (see [Figure 14](#)).



**Figure 14. DRV832XX EVM Firmware Executable File**

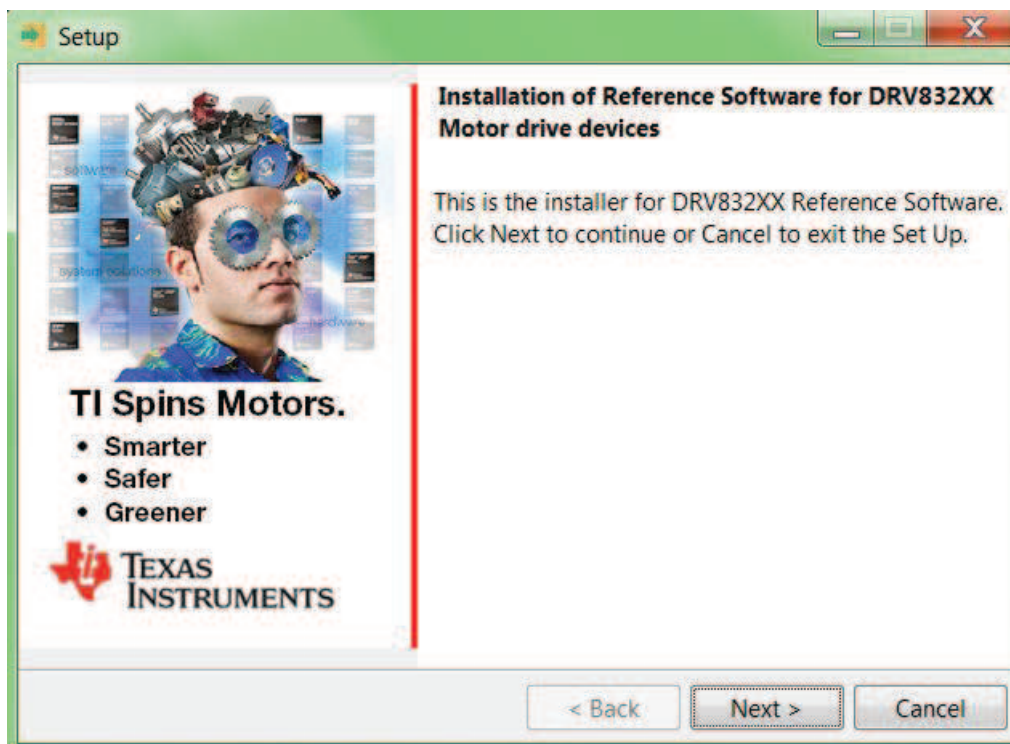
- Step 2. Follow the prompts to select another language from the default of English (see [Figure 15](#)).



**Figure 15. Language Selection**

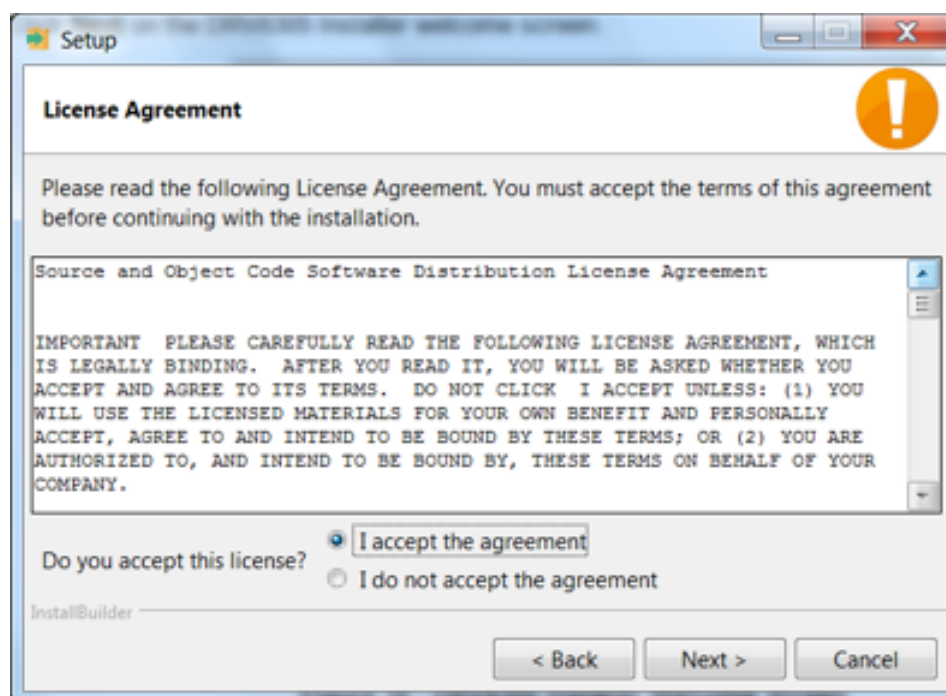
- Step 3. Click the *Next* button on the DRV832XX Installer welcome screen (see [Figure 16](#)).





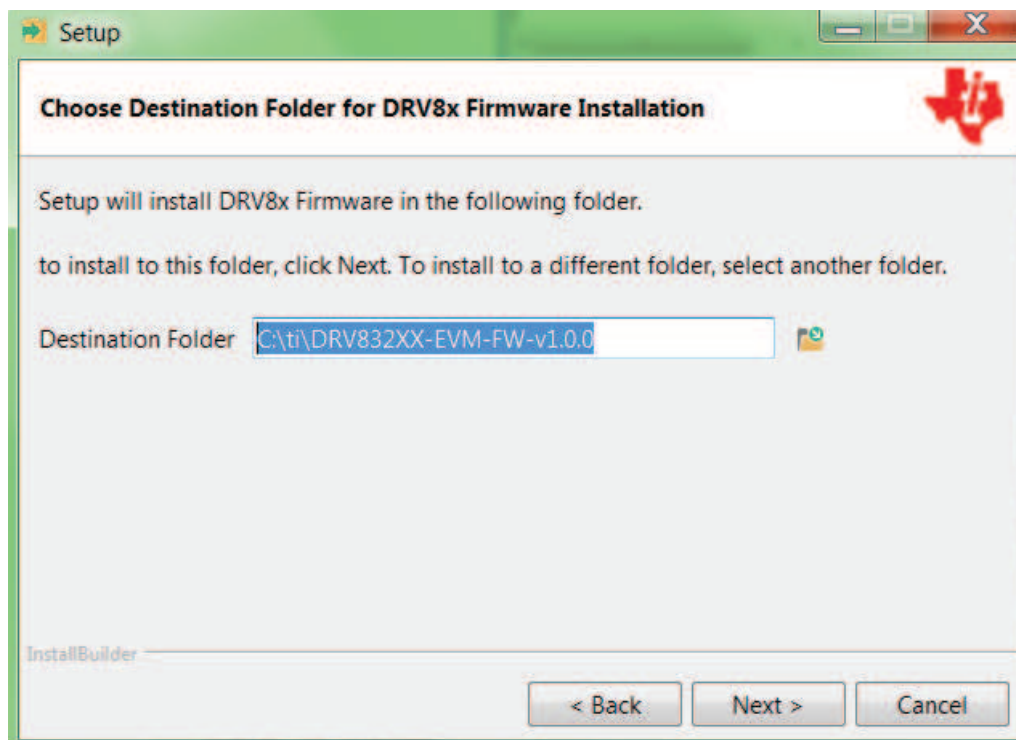
**Figure 16. Setup Home Screen**

- Step 4. Read through and accept the license agreement to proceed with the installation (see [Figure 17](#)).



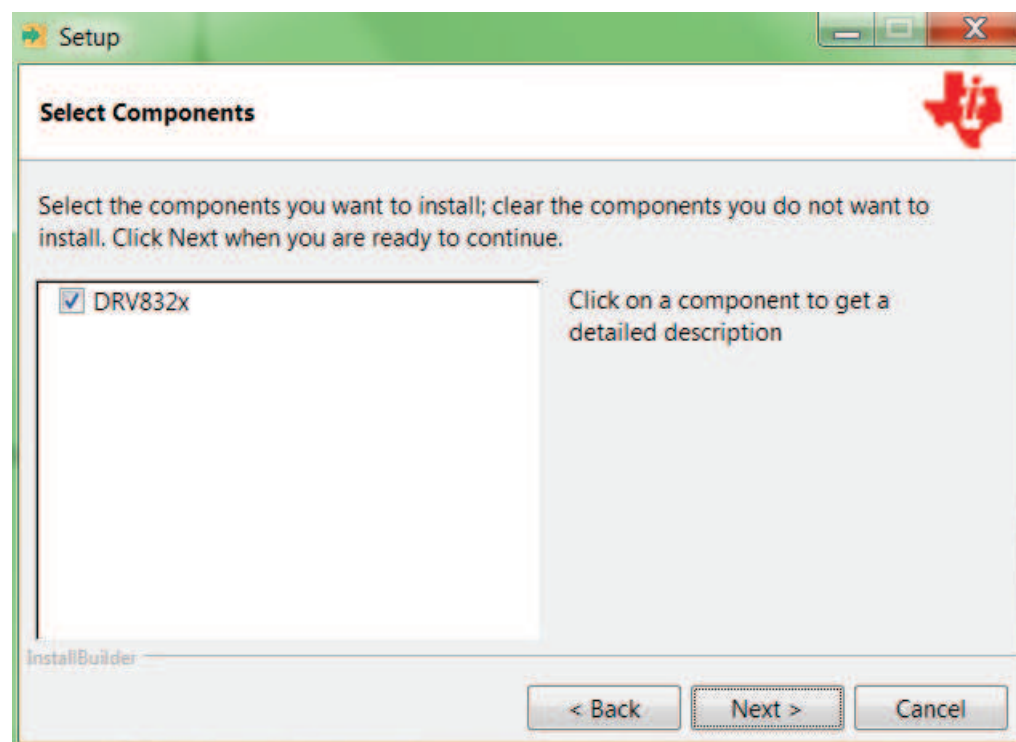
**Figure 17. DRV832XX Software License Agreement**

- Step 5. Choose the destination location for the example CCS projects and the documentation (see [Figure 18](#)). This destination can be set to any location in the PC.



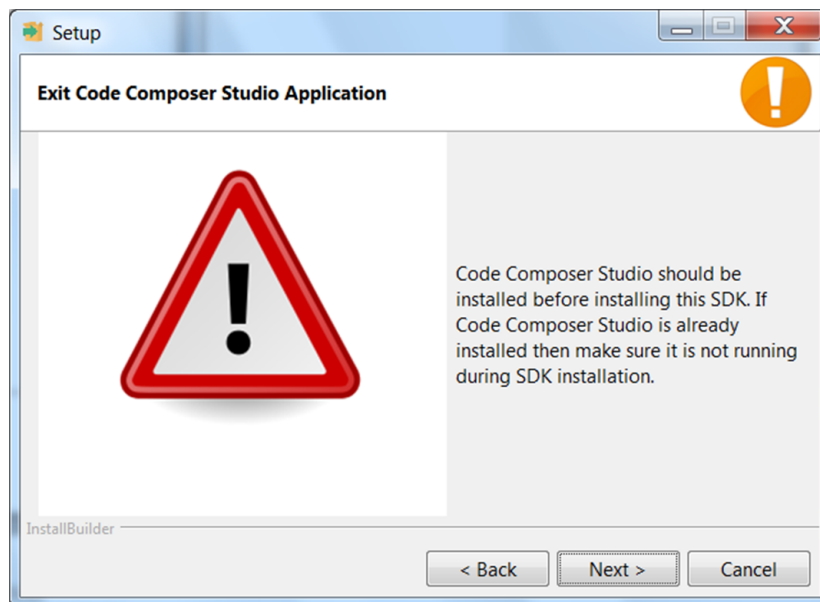
**Figure 18. Setup Destination Folder**

Step 6. Select each DRV8x components to Install (see [Figure 19](#)).



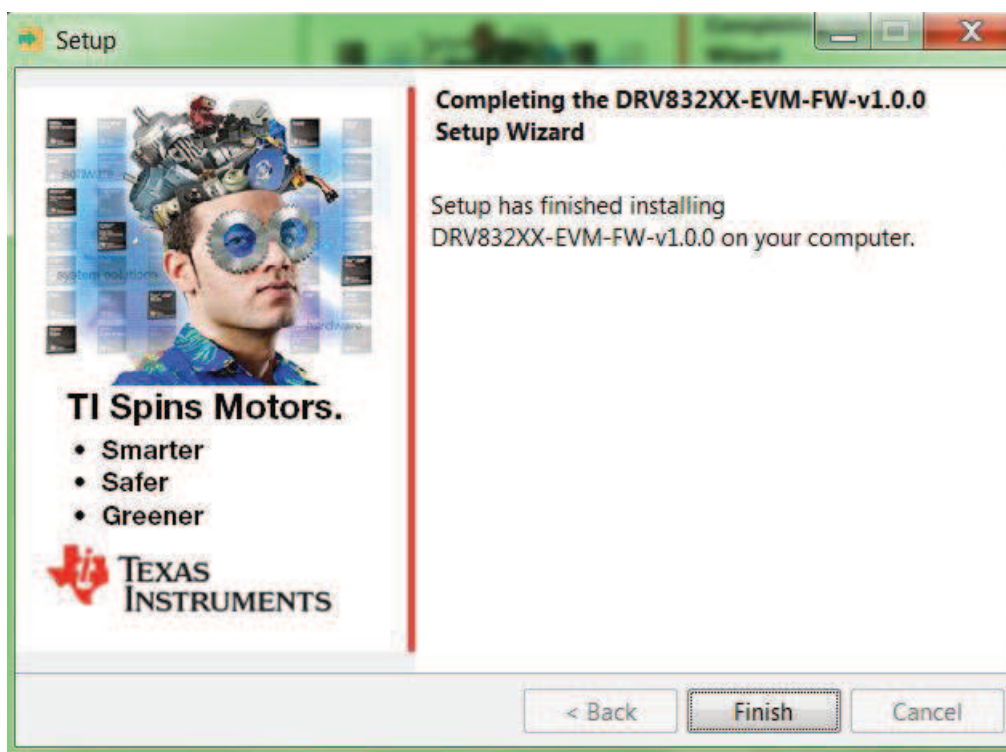
**Figure 19. Select Setup Components**

Step 7. Ensure all running instances of CCS are closed (see [Figure 20](#)).



**Figure 20. Warning Message to Close CCS**

- Step 8. Continue with the installation process.
- Step 9. Click the *Next* button to install after reviewing the settings.
- Step 10. Click the *Finish* button when the files are successfully installed in the destination folder (see [Figure 21](#)).

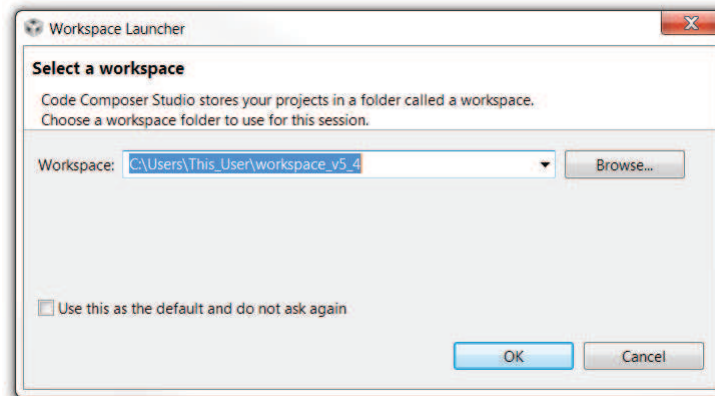


**Figure 21. Firmware Setup Complete**

### 3.3 Creating or Importing a DRV8x Project into CCS

When the CCS software is started, the user must first select a workspace. A workspace is the structure in which projects are kept. Multiple projects can be saved in one workspace. TI recommends starting with the project for the specific DRV8x device. After importing an existing project, the user can explore the features of CCS to become familiar with the IDE. Follow these steps to import the provided project:

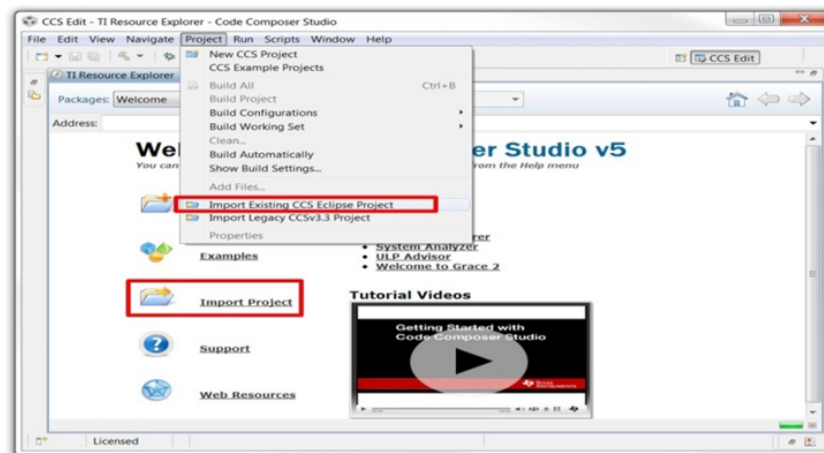
- Step 1. Double click the CCS icon to open the application. A CCS icon is placed on the desktop after installation.
- Step 2. Select the location and name of the workspace. The location and naming convention can be changed based on the user's preference (see [Figure 22](#)).
- Step 3. Click the **OK** button to accept.



**Figure 22. Workspace Launcher**

After selecting the workspace, the CCS software opens displaying a welcome menu.

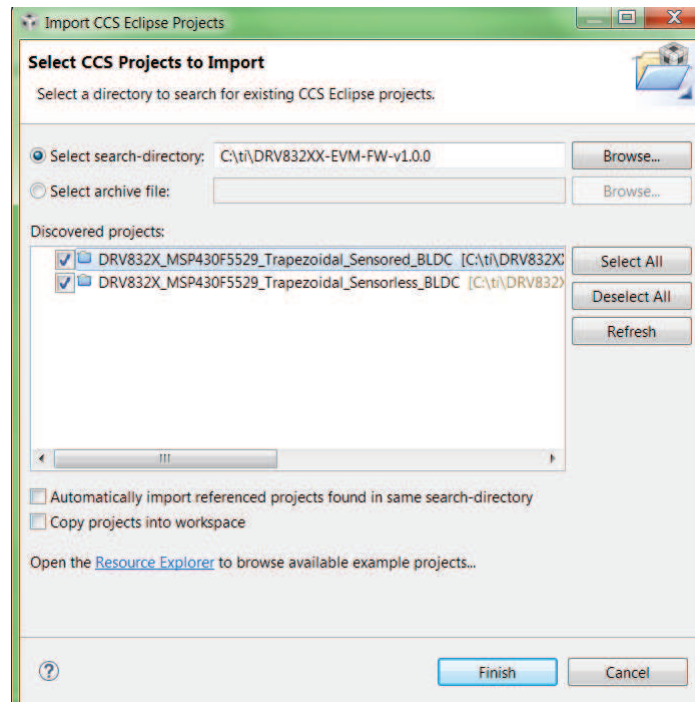
- Step 4. Import a project either from the welcome menu by selecting *Import Project* or go to the *Project* menu and select *Import Existing CCS Eclipse Project* (see [Figure 23](#)).



**Figure 23. Importing Existing Projects**

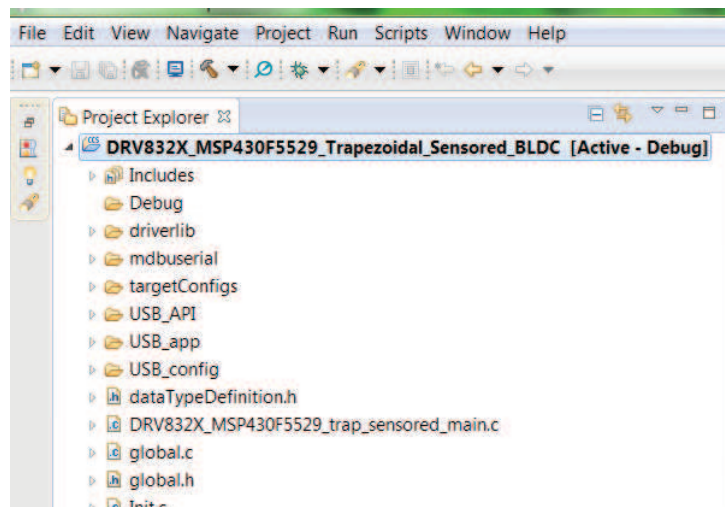
- Step 5. In the new window that appears showing the import options, click the *Browse...* button and find the provided projects through the folder browser. These projects are located in the SDK installation directory. The example location is C:\ti\DRV832XX-V1.0 (see [Figure 24](#)). When selected, the provided project appears under *Discovered Projects*.
- Step 6. Make sure the correct box is checked and then click the *Finish* button (see [Figure 24](#)).





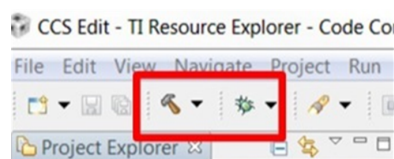
**Figure 24. Selecting Existing Projects**

When the projects are imported to the workspace, the project should appear in the *Project Explorer* window as shown in [Figure 25](#).



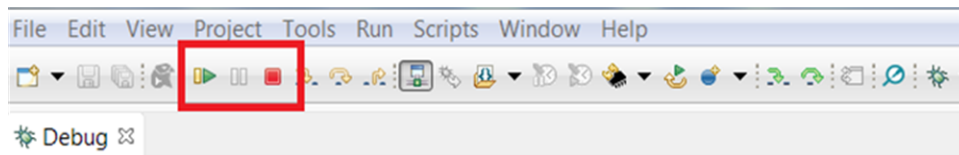
**Figure 25. DRV832x Project Explorer**

Step 7. Explore the project files, build the project to create an image to be downloaded on the MSP430F5529 hardware, and download the project from here. Make sure the MSP430F5529 is connected to the PC through USB interface before downloading the code.



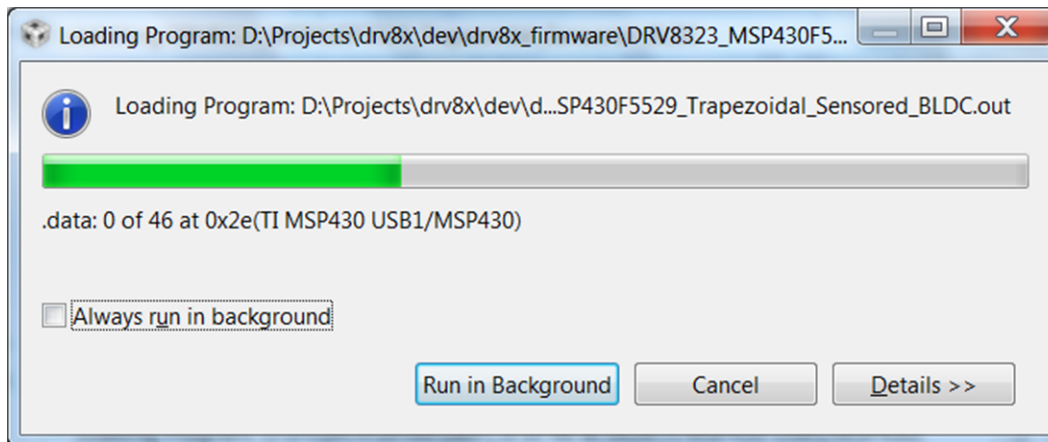
**Figure 26. Build Project Files Buttons**

- Step 8. When the CCS software is connected to the device, run the program from CCS to execute the program in hardware by clicking the green play button (see [Figure 27](#). Click the red stop button ((see [Figure 27](#)) to disconnect the MSP-FET430UIF from.



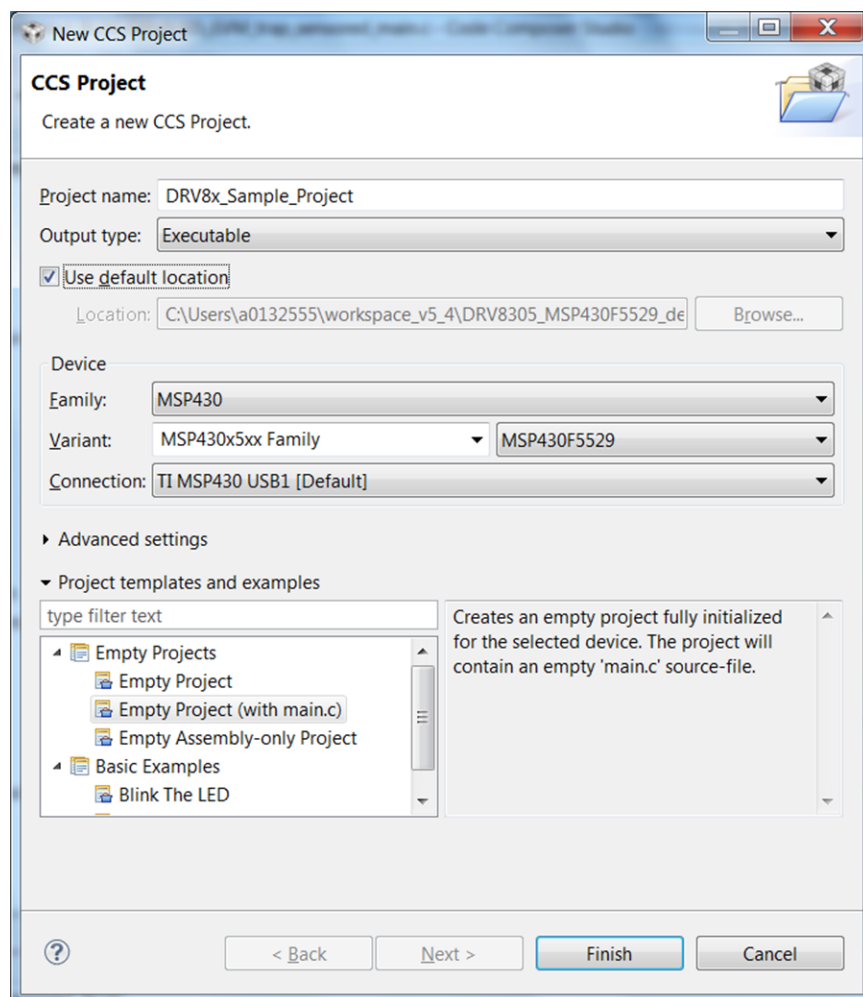
**Figure 27. Execute Buttons**

A new window appears showing loading of the program on MSP430 hardware (see [Figure 28](#)).



**Figure 28. Flashing Firmware**

- Step 9. To create a new project, start by clicking on the *File* menu, select *New*, and then *CCS Project*. A new window appears. Complete these steps to proceed:
1. Fill in the *Project Name* text field.
  2. Under the *Family* drop-down menu, select *MSP430x5xx Family*.
  3. Select *MSP430F5529* from the *Variant* drop-down menu and the specific device in the adjoining field.



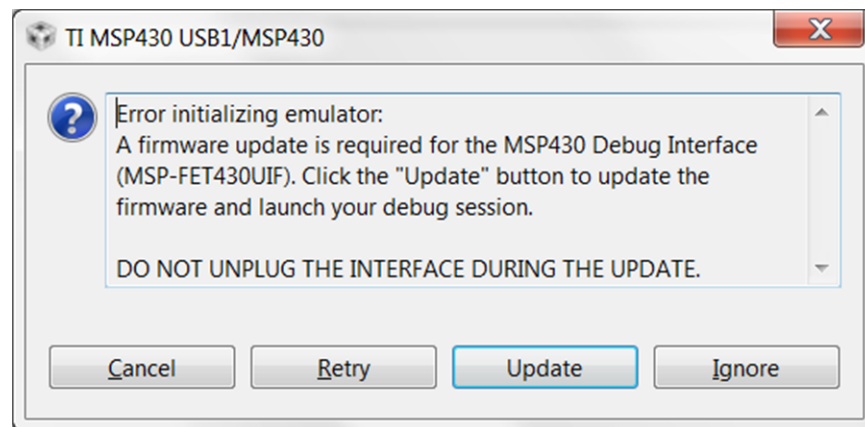
**Figure 29. New CCS Project**

### 3.4 Updating the MSP430 USB-FET

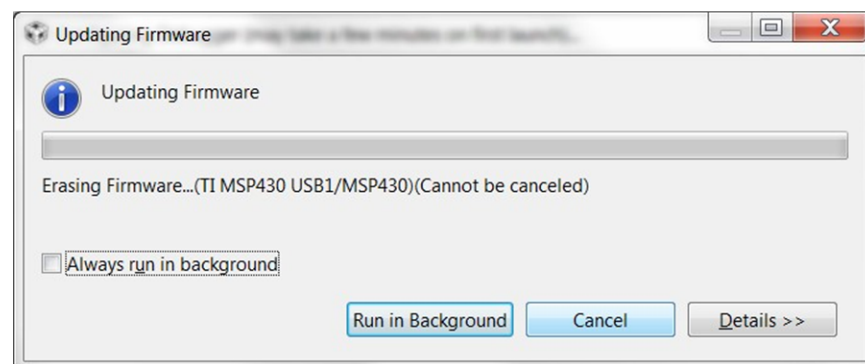
After the reference project is imported and selected in the CCS software, the provided software builds and runs on the MSP430 device. The device is programmed by the MSP430 USB-FET. When this device is used, the CCS software automatically detects the firmware version and notifies of an update. The process takes a few minutes, let the update complete before unplugging the USB cable or closing CCS. [Figure 30](#) and [Figure 31](#) show the update process.

#### CAUTION

To help prevent any device damage, wait for the update to finish before unplugging the MSP430 device or closing CCS.



**Figure 30. Error Initializing Emulator**



**Figure 31. Updating LaunchPad development kit Firmware**

## 4 GUI Application

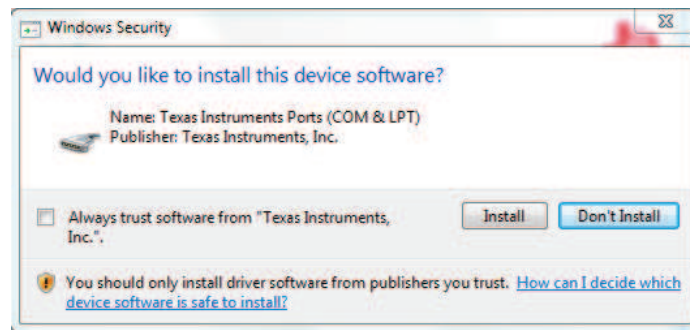
### 4.1 Installation

Follow these steps to install the GUI application:

- Step 1. Download and run the Setup\_boostxldr832x-1.0.0\_EVM.exe installer file to install the GUI application.
- Step 2. Install the COM port driver for *TI MSP430 USB* (the firmware on MSP430F5529 LaunchPad development kit plug-in module).

This driver is automatically installed during the GUI installation process. Click the *Install* button when the window shown in [Figure 32](#) appears during the GUI installation. If this pop-up does not appear, then the drivers are already installed.





**Figure 32. TI MSP430 USB Installer**

If the automatic driver installation fails for some reason, or if the *Don't Install* button was clicked, install the drivers manually. First find the driver .inf file (msp430\_ti\_signed.inf) in the following folder: C:\Program Files (x86)\Texas Instruments\BOOSTXL-DRV832X\TI MSP430 USB Driver. Right click on the .inf file and select the *Install* option. Follow the installation instructions to successfully install the driver.

If any issues occur during the driver installation steps or to learn more about the process, download and extract the *MSP430 USB Developers Package* from [www.ti.com/tool/msp430usbdevpack](http://www.ti.com/tool/msp430usbdevpack) and refer to sections 2.5.2 for Windows 7 and 2.5.3 for Windows 8 in the document *Examples\_Guide\_MSP430\_USB.pdf* based on the appropriate Windows. This document can be found under the *MSP430USBDevelopersPackage\_5\_10\_00\_17MSP430\_USB\_Software\Documentation* directory of the extracted *MSP430 USB Developers Package*.

## 4.2 Hardware Setup

The hardware required to run the motor control is an MSP430F5529 LaunchPad development kit, the BOOSTXL-DRV8323Rx BoosterPack plug-in module, a Micro-USB cable, and a power supply with a DC output from 8 to 54 V. Follow these steps to start up the BoosterPack plug-in module:

- Step 1. Dock the BOOSTXL-DRV8323Rx BoosterPack plug-in module to the MSP430F5529 LaunchPad development kit through the two 40-pin headers J3 and J4.

---

**NOTE:** Observe the correct polarity of the 40-pin LaunchPad headers. The MSP430F5529 LaunchPad header J1 should be connected to BOOSTXL-DRV8323Rx BoosterPack header J3 and MSP430F5529 LaunchPad header J2 should be connected to BOOSTXL-DRV8323Rx BoosterPack header J4.

---

- Step 2. Connect the three phases from the brushless DC motor to the J5 connector on the BOOSTXL-DRV8323Rx BoosterPack plug-in module. Phase A, B, and C are labeled in white silkscreen on the PCB top layer.

---

**NOTE:** If using the sensed firmware on the MSP430F5529 LaunchPad development kit, connect a brushless DC motor Hall sensor inputs to header J2. If using sensorless firmware header J2 can be left unconnected.

---



---

**NOTE:** If using 1x PWM Mode with the **sensed firmware** R36, R37, and R38 must be populated with 0-Ω resistors.

---

- Step 3. Connect the DC power supply to header J1.

---

**NOTE:** Observe the correct polarity of +VM and GND connections on the BOOSTXL-DRV8323Rx BoosterPack connection J1

---

- Step 4. Connect a Micro-USB cable to the LaunchPad development kit and computer.

- Step 5. Turn on the power supply and power up the PCB.

### 4.3 Launching BOOSTXL-DRV832X EVM GUI

The BOOSTXL-DRV832X EVM GUI along with the four different BOOSTXL-DRV832X EVMs facilitate control of brushless DC motors. The BOOSTXL-DRV832x GUI provides functionality for adjusting the speed and direction of the motor, setting various fault parameters such as voltage and current protection limits, observing the motor drive speed, and monitoring the device fault status. The GUI can also be used to tune the motor for best performance using various parameters available in the motor control parameter page.

To launch the GUI, click on the BOOSTXL-DRV832X EVM shortcut on the desktop or navigate to the Windows Start Menu and click *All Programs*. Navigate to the *Texas Instruments* folder and select the BOOSTXL-DRV832X folder.

The Device *Launch* page (see [Figure 33](#)) is displayed to launch one of the 4 device variants (DRV8323S, DRV8320S, DRV8323H, DRV8320H). Click on one of the *Launch* buttons to launch next either the **DRV8323RS** or **DRV8323RH** labels.

For a guide on the different attributes of the BOOSTXL-DRV832x EVM GUI, refer to the [BOOSTXL-DRV832X GUI User's Guide](#)

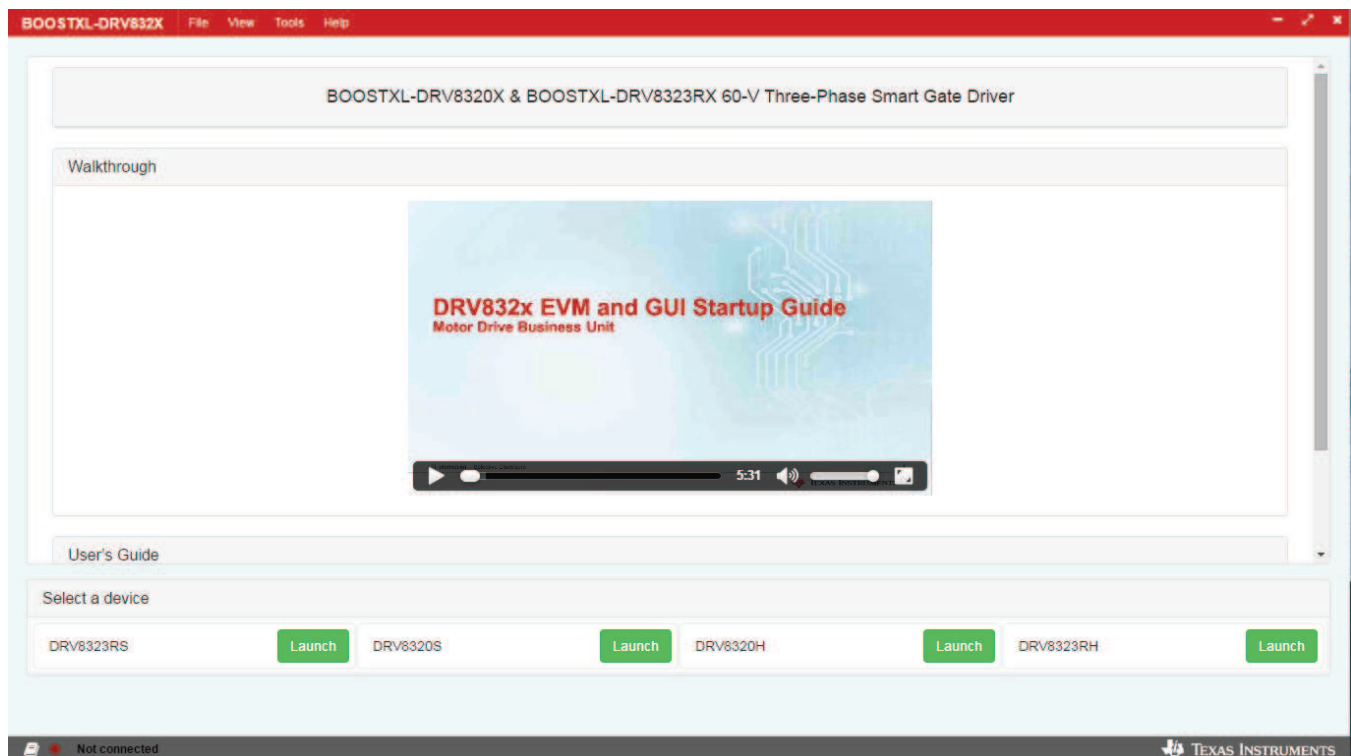


Figure 33. BOOSTXL-DRV832X EVM Device Launch

## Revision History

NOTE: Page numbers for previous revisions may differ from page numbers in the current version.

### Changes from B Revision (March 2018) to C Revision Page

- Changed some DRV832XX references to DRV832x ..... [12](#)

### Changes from A Revision (May 2017) to B Revision Page

- Added links to download the installation package for the reference software ..... [12](#)

### Changes from Original (February 2017) to A Revision Page

- Added the note about the revision A MDBU017 board not meeting the SO offset specification ..... [1](#)

## STANDARD TERMS FOR EVALUATION MODULES

1. *Delivery:* TI delivers TI evaluation boards, kits, or modules, including any accompanying demonstration software, components, and/or documentation which may be provided together or separately (collectively, an "EVM" or "EVMs") to the User ("User") in accordance with the terms set forth herein. User's acceptance of the EVM is expressly subject to the following terms.

- 1.1 EVMs are intended solely for product or software developers for use in a research and development setting to facilitate feasibility evaluation, experimentation, or scientific analysis of TI semiconductor products. EVMs have no direct function and are not finished products. EVMs shall not be directly or indirectly assembled as a part or subassembly in any finished product. For clarification, any software or software tools provided with the EVM ("Software") shall not be subject to the terms and conditions set forth herein but rather shall be subject to the applicable terms that accompany such Software
- 1.2 EVMs are not intended for consumer or household use. EVMs may not be sold, sublicensed, leased, rented, loaned, assigned, or otherwise distributed for commercial purposes by Users, in whole or in part, or used in any finished product or production system.

- 2 *Limited Warranty and Related Remedies/Disclaimers:*

- 2.1 These terms do not apply to Software. The warranty, if any, for Software is covered in the applicable Software License Agreement.
- 2.2 TI warrants that the TI EVM will conform to TI's published specifications for ninety (90) days after the date TI delivers such EVM to User. Notwithstanding the foregoing, TI shall not be liable for a nonconforming EVM if (a) the nonconformity was caused by neglect, misuse or mistreatment by an entity other than TI, including improper installation or testing, or for any EVMs that have been altered or modified in any way by an entity other than TI, (b) the nonconformity resulted from User's design, specifications or instructions for such EVMs or improper system design, or (c) User has not paid on time. Testing and other quality control techniques are used to the extent TI deems necessary. TI does not test all parameters of each EVM. User's claims against TI under this Section 2 are void if User fails to notify TI of any apparent defects in the EVMs within ten (10) business days after delivery, or of any hidden defects with ten (10) business days after the defect has been detected.
- 2.3 TI's sole liability shall be at its option to repair or replace EVMs that fail to conform to the warranty set forth above, or credit User's account for such EVM. TI's liability under this warranty shall be limited to EVMs that are returned during the warranty period to the address designated by TI and that are determined by TI not to conform to such warranty. If TI elects to repair or replace such EVM, TI shall have a reasonable time to repair such EVM or provide replacements. Repaired EVMs shall be warranted for the remainder of the original warranty period. Replaced EVMs shall be warranted for a new full ninety (90) day warranty period.

- 3 *Regulatory Notices:*

- 3.1 *United States*

- 3.1.1 *Notice applicable to EVMs not FCC-Approved:*

**FCC NOTICE:** This kit is designed to allow product developers to evaluate electronic components, circuitry, or software associated with the kit to determine whether to incorporate such items in a finished product and software developers to write software applications for use with the end product. This kit is not a finished product and when assembled may not be resold or otherwise marketed unless all required FCC equipment authorizations are first obtained. Operation is subject to the condition that this product not cause harmful interference to licensed radio stations and that this product accept harmful interference. Unless the assembled kit is designed to operate under part 15, part 18 or part 95 of this chapter, the operator of the kit must operate under the authority of an FCC license holder or must secure an experimental authorization under part 5 of this chapter.

- 3.1.2 *For EVMs annotated as FCC – FEDERAL COMMUNICATIONS COMMISSION Part 15 Compliant:*

### **CAUTION**

This device complies with part 15 of the FCC Rules. Operation is subject to the following two conditions: (1) This device may not cause harmful interference, and (2) this device must accept any interference received, including interference that may cause undesired operation.

Changes or modifications not expressly approved by the party responsible for compliance could void the user's authority to operate the equipment.

### **FCC Interference Statement for Class A EVM devices**

*NOTE: This equipment has been tested and found to comply with the limits for a Class A digital device, pursuant to part 15 of the FCC Rules. These limits are designed to provide reasonable protection against harmful interference when the equipment is operated in a commercial environment. This equipment generates, uses, and can radiate radio frequency energy and, if not installed and used in accordance with the instruction manual, may cause harmful interference to radio communications. Operation of this equipment in a residential area is likely to cause harmful interference in which case the user will be required to correct the interference at his own expense.*



## FCC Interference Statement for Class B EVM devices

*NOTE: This equipment has been tested and found to comply with the limits for a Class B digital device, pursuant to part 15 of the FCC Rules. These limits are designed to provide reasonable protection against harmful interference in a residential installation. This equipment generates, uses and can radiate radio frequency energy and, if not installed and used in accordance with the instructions, may cause harmful interference to radio communications. However, there is no guarantee that interference will not occur in a particular installation. If this equipment does cause harmful interference to radio or television reception, which can be determined by turning the equipment off and on, the user is encouraged to try to correct the interference by one or more of the following measures:*

- *Reorient or relocate the receiving antenna.*
- *Increase the separation between the equipment and receiver.*
- *Connect the equipment into an outlet on a circuit different from that to which the receiver is connected.*
- *Consult the dealer or an experienced radio/TV technician for help.*

## 3.2 Canada

### 3.2.1 For EVMs issued with an Industry Canada Certificate of Conformance to RSS-210 or RSS-247

#### Concerning EVMs Including Radio Transmitters:

This device complies with Industry Canada license-exempt RSSs. Operation is subject to the following two conditions:

(1) this device may not cause interference, and (2) this device must accept any interference, including interference that may cause undesired operation of the device.

#### Concernant les EVMs avec appareils radio:

Le présent appareil est conforme aux CNR d'Industrie Canada applicables aux appareils radio exempts de licence. L'exploitation est autorisée aux deux conditions suivantes: (1) l'appareil ne doit pas produire de brouillage, et (2) l'utilisateur de l'appareil doit accepter tout brouillage radioélectrique subi, même si le brouillage est susceptible d'en compromettre le fonctionnement.

#### Concerning EVMs Including Detachable Antennas:

Under Industry Canada regulations, this radio transmitter may only operate using an antenna of a type and maximum (or lesser) gain approved for the transmitter by Industry Canada. To reduce potential radio interference to other users, the antenna type and its gain should be so chosen that the equivalent isotropically radiated power (e.i.r.p.) is not more than that necessary for successful communication. This radio transmitter has been approved by Industry Canada to operate with the antenna types listed in the user guide with the maximum permissible gain and required antenna impedance for each antenna type indicated. Antenna types not included in this list, having a gain greater than the maximum gain indicated for that type, are strictly prohibited for use with this device.

#### Concernant les EVMs avec antennes détachables

Conformément à la réglementation d'Industrie Canada, le présent émetteur radio peut fonctionner avec une antenne d'un type et d'un gain maximal (ou inférieur) approuvé pour l'émetteur par Industrie Canada. Dans le but de réduire les risques de brouillage radioélectrique à l'intention des autres utilisateurs, il faut choisir le type d'antenne et son gain de sorte que la puissance isotrope rayonnée équivalente (p.i.r.e.) ne dépasse pas l'intensité nécessaire à l'établissement d'une communication satisfaisante. Le présent émetteur radio a été approuvé par Industrie Canada pour fonctionner avec les types d'antenne énumérés dans le manuel d'usage et ayant un gain admissible maximal et l'impédance requise pour chaque type d'antenne. Les types d'antenne non inclus dans cette liste, ou dont le gain est supérieur au gain maximal indiqué, sont strictement interdits pour l'exploitation de l'émetteur.

## 3.3 Japan

3.3.1 *Notice for EVMs delivered in Japan:* Please see [http://www.tij.co.jp/lsds/ti\\_ja/general/eStore/notice\\_01.page](http://www.tij.co.jp/lsds/ti_ja/general/eStore/notice_01.page) 日本国内に輸入される評価用キット、ボードについては、次のところをご覧ください。  
[http://www.tij.co.jp/lsds/ti\\_ja/general/eStore/notice\\_01.page](http://www.tij.co.jp/lsds/ti_ja/general/eStore/notice_01.page)

3.3.2 *Notice for Users of EVMs Considered "Radio Frequency Products" in Japan:* EVMs entering Japan may not be certified by TI as conforming to Technical Regulations of Radio Law of Japan.

If User uses EVMs in Japan, not certified to Technical Regulations of Radio Law of Japan, User is required to follow the instructions set forth by Radio Law of Japan, which includes, but is not limited to, the instructions below with respect to EVMs (which for the avoidance of doubt are stated strictly for convenience and should be verified by User):

1. Use EVMs in a shielded room or any other test facility as defined in the notification #173 issued by Ministry of Internal Affairs and Communications on March 28, 2006, based on Sub-section 1.1 of Article 6 of the Ministry's Rule for Enforcement of Radio Law of Japan,
2. Use EVMs only after User obtains the license of Test Radio Station as provided in Radio Law of Japan with respect to EVMs, or
3. Use of EVMs only after User obtains the Technical Regulations Conformity Certification as provided in Radio Law of Japan with respect to EVMs. Also, do not transfer EVMs, unless User gives the same notice above to the transferee. Please note that if User does not follow the instructions above, User will be subject to penalties of Radio Law of Japan.

【無線電波を送信する製品の開発キットをお使いになる際の注意事項】 開発キットの中には技術基準適合証明を受けていないものがあります。技術適合証明を受けていないもののご使用に際しては、電波法遵守のため、以下のいずれかの措置を取っていただく必要がありますのでご注意ください。

1. 電波法施行規則第6条第1項第1号に基づく平成18年3月28日総務省告示第173号で定められた電波暗室等の試験設備でご使用いただく。
2. 実験局の免許を取得後ご使用いただく。
3. 技術基準適合証明を取得後ご使用いただく。

なお、本製品は、上記の「ご使用にあたっての注意」を譲渡先、移転先に通知しない限り、譲渡、移転できないものとします。

上記を遵守頂けない場合は、電波法の罰則が適用される可能性があることをご留意ください。日本テキサス・インスツルメンツ株式会社  
東京都新宿区西新宿 6 丁目 2 4 番 1 号  
西新宿三井ビル

3.3.3 *Notice for EVMs for Power Line Communication:* Please see [http://www.tij.co.jp/lstds/ti\\_ja/general/eStore/notice\\_02.page](http://www.tij.co.jp/lstds/ti_ja/general/eStore/notice_02.page)  
電力線搬送波通信についての開発キットをお使いになる際の注意事項については、次のところをご覧ください。 [http://www.tij.co.jp/lstds/ti\\_ja/general/eStore/notice\\_02.page](http://www.tij.co.jp/lstds/ti_ja/general/eStore/notice_02.page)

#### 3.4 *European Union*

##### 3.4.1 *For EVMs subject to EU Directive 2014/30/EU (Electromagnetic Compatibility Directive):*

This is a class A product intended for use in environments other than domestic environments that are connected to a low-voltage power-supply network that supplies buildings used for domestic purposes. In a domestic environment this product may cause radio interference in which case the user may be required to take adequate measures.

#### 4 *EVM Use Restrictions and Warnings:*

##### 4.1 EVMS ARE NOT FOR USE IN FUNCTIONAL SAFETY AND/OR SAFETY CRITICAL EVALUATIONS, INCLUDING BUT NOT LIMITED TO EVALUATIONS OF LIFE SUPPORT APPLICATIONS.

##### 4.2 User must read and apply the user guide and other available documentation provided by TI regarding the EVM prior to handling or using the EVM, including without limitation any warning or restriction notices. The notices contain important safety information related to, for example, temperatures and voltages.

##### 4.3 *Safety-Related Warnings and Restrictions:*

4.3.1 User shall operate the EVM within TI's recommended specifications and environmental considerations stated in the user guide, other available documentation provided by TI, and any other applicable requirements and employ reasonable and customary safeguards. Exceeding the specified performance ratings and specifications (including but not limited to input and output voltage, current, power, and environmental ranges) for the EVM may cause personal injury or death, or property damage. If there are questions concerning performance ratings and specifications, User should contact a TI field representative prior to connecting interface electronics including input power and intended loads. Any loads applied outside of the specified output range may also result in unintended and/or inaccurate operation and/or possible permanent damage to the EVM and/or interface electronics. Please consult the EVM user guide prior to connecting any load to the EVM output. If there is uncertainty as to the load specification, please contact a TI field representative. During normal operation, even with the inputs and outputs kept within the specified allowable ranges, some circuit components may have elevated case temperatures. These components include but are not limited to linear regulators, switching transistors, pass transistors, current sense resistors, and heat sinks, which can be identified using the information in the associated documentation. When working with the EVM, please be aware that the EVM may become very warm.

4.3.2 EVMs are intended solely for use by technically qualified, professional electronics experts who are familiar with the dangers and application risks associated with handling electrical mechanical components, systems, and subsystems. User assumes all responsibility and liability for proper and safe handling and use of the EVM by User or its employees, affiliates, contractors or designees. User assumes all responsibility and liability to ensure that any interfaces (electronic and/or mechanical) between the EVM and any human body are designed with suitable isolation and means to safely limit accessible leakage currents to minimize the risk of electrical shock hazard. User assumes all responsibility and liability for any improper or unsafe handling or use of the EVM by User or its employees, affiliates, contractors or designees.

##### 4.4 User assumes all responsibility and liability to determine whether the EVM is subject to any applicable international, federal, state, or local laws and regulations related to User's handling and use of the EVM and, if applicable, User assumes all responsibility and liability for compliance in all respects with such laws and regulations. User assumes all responsibility and liability for proper disposal and recycling of the EVM consistent with all applicable international, federal, state, and local requirements.

##### 5. *Accuracy of Information:* To the extent TI provides information on the availability and function of EVMS, TI attempts to be as accurate as possible. However, TI does not warrant the accuracy of EVM descriptions, EVM availability or other information on its websites as accurate, complete, reliable, current, or error-free.

6. *Disclaimers:*

6.1 EXCEPT AS SET FORTH ABOVE, EVMS AND ANY MATERIALS PROVIDED WITH THE EVM (INCLUDING, BUT NOT LIMITED TO, REFERENCE DESIGNS AND THE DESIGN OF THE EVM ITSELF) ARE PROVIDED "AS IS" AND "WITH ALL FAULTS." TI DISCLAIMS ALL OTHER WARRANTIES, EXPRESS OR IMPLIED, REGARDING SUCH ITEMS, INCLUDING BUT NOT LIMITED TO ANY EPIDEMIC FAILURE WARRANTY OR IMPLIED WARRANTIES OF MERCHANTABILITY OR FITNESS FOR A PARTICULAR PURPOSE OR NON-INFRINGEMENT OF ANY THIRD PARTY PATENTS, COPYRIGHTS, TRADE SECRETS OR OTHER INTELLECTUAL PROPERTY RIGHTS.

6.2 EXCEPT FOR THE LIMITED RIGHT TO USE THE EVM SET FORTH HEREIN, NOTHING IN THESE TERMS SHALL BE CONSTRUED AS GRANTING OR CONFERRING ANY RIGHTS BY LICENSE, PATENT, OR ANY OTHER INDUSTRIAL OR INTELLECTUAL PROPERTY RIGHT OF TI, ITS SUPPLIERS/LICENSORS OR ANY OTHER THIRD PARTY, TO USE THE EVM IN ANY FINISHED END-USER OR READY-TO-USE FINAL PRODUCT, OR FOR ANY INVENTION, DISCOVERY OR IMPROVEMENT, REGARDLESS OF WHEN MADE, CONCEIVED OR ACQUIRED.

7. *USER'S INDEMNITY OBLIGATIONS AND REPRESENTATIONS.* USER WILL DEFEND, INDEMNIFY AND HOLD TI, ITS LICENSORS AND THEIR REPRESENTATIVES HARMLESS FROM AND AGAINST ANY AND ALL CLAIMS, DAMAGES, LOSSES, EXPENSES, COSTS AND LIABILITIES (COLLECTIVELY, "CLAIMS") ARISING OUT OF OR IN CONNECTION WITH ANY HANDLING OR USE OF THE EVM THAT IS NOT IN ACCORDANCE WITH THESE TERMS. THIS OBLIGATION SHALL APPLY WHETHER CLAIMS ARISE UNDER STATUTE, REGULATION, OR THE LAW OF TORT, CONTRACT OR ANY OTHER LEGAL THEORY, AND EVEN IF THE EVM FAILS TO PERFORM AS DESCRIBED OR EXPECTED.

8. *Limitations on Damages and Liability:*

8.1 *General Limitations.* IN NO EVENT SHALL TI BE LIABLE FOR ANY SPECIAL, COLLATERAL, INDIRECT, PUNITIVE, INCIDENTAL, CONSEQUENTIAL, OR EXEMPLARY DAMAGES IN CONNECTION WITH OR ARISING OUT OF THESE TERMS OR THE USE OF THE EVMS, REGARDLESS OF WHETHER TI HAS BEEN ADVISED OF THE POSSIBILITY OF SUCH DAMAGES. EXCLUDED DAMAGES INCLUDE, BUT ARE NOT LIMITED TO, COST OF REMOVAL OR REINSTALLATION, ANCILLARY COSTS TO THE PROCUREMENT OF SUBSTITUTE GOODS OR SERVICES, RETESTING, OUTSIDE COMPUTER TIME, LABOR COSTS, LOSS OF GOODWILL, LOSS OF PROFITS, LOSS OF SAVINGS, LOSS OF USE, LOSS OF DATA, OR BUSINESS INTERRUPTION. NO CLAIM, SUIT OR ACTION SHALL BE BROUGHT AGAINST TI MORE THAN TWELVE (12) MONTHS AFTER THE EVENT THAT GAVE RISE TO THE CAUSE OF ACTION HAS OCCURRED.

8.2 *Specific Limitations.* IN NO EVENT SHALL TI'S AGGREGATE LIABILITY FROM ANY USE OF AN EVM PROVIDED HEREUNDER, INCLUDING FROM ANY WARRANTY, INDEMNITY OR OTHER OBLIGATION ARISING OUT OF OR IN CONNECTION WITH THESE TERMS, EXCEED THE TOTAL AMOUNT PAID TO TI BY USER FOR THE PARTICULAR EVM(S) AT ISSUE DURING THE PRIOR TWELVE (12) MONTHS WITH RESPECT TO WHICH LOSSES OR DAMAGES ARE CLAIMED. THE EXISTENCE OF MORE THAN ONE CLAIM SHALL NOT ENLARGE OR EXTEND THIS LIMIT.

9. *Return Policy.* Except as otherwise provided, TI does not offer any refunds, returns, or exchanges. Furthermore, no return of EVM(s) will be accepted if the package has been opened and no return of the EVM(s) will be accepted if they are damaged or otherwise not in a resalable condition. If User feels it has been incorrectly charged for the EVM(s) it ordered or that delivery violates the applicable order, User should contact TI. All refunds will be made in full within thirty (30) working days from the return of the components(s), excluding any postage or packaging costs.

10. *Governing Law:* These terms and conditions shall be governed by and interpreted in accordance with the laws of the State of Texas, without reference to conflict-of-laws principles. User agrees that non-exclusive jurisdiction for any dispute arising out of or relating to these terms and conditions lies within courts located in the State of Texas and consents to venue in Dallas County, Texas. Notwithstanding the foregoing, any judgment may be enforced in any United States or foreign court, and TI may seek injunctive relief in any United States or foreign court.

## IMPORTANT NOTICE FOR TI DESIGN INFORMATION AND RESOURCES

Texas Instruments Incorporated ("TI") technical, application or other design advice, services or information, including, but not limited to, reference designs and materials relating to evaluation modules, (collectively, "TI Resources") are intended to assist designers who are developing applications that incorporate TI products; by downloading, accessing or using any particular TI Resource in any way, you (individually or, if you are acting on behalf of a company, your company) agree to use it solely for this purpose and subject to the terms of this Notice.

TI's provision of TI Resources does not expand or otherwise alter TI's applicable published warranties or warranty disclaimers for TI products, and no additional obligations or liabilities arise from TI providing such TI Resources. TI reserves the right to make corrections, enhancements, improvements and other changes to its TI Resources.

You understand and agree that you remain responsible for using your independent analysis, evaluation and judgment in designing your applications and that you have full and exclusive responsibility to assure the safety of your applications and compliance of your applications (and of all TI products used in or for your applications) with all applicable regulations, laws and other applicable requirements. You represent that, with respect to your applications, you have all the necessary expertise to create and implement safeguards that (1) anticipate dangerous consequences of failures, (2) monitor failures and their consequences, and (3) lessen the likelihood of failures that might cause harm and take appropriate actions. You agree that prior to using or distributing any applications that include TI products, you will thoroughly test such applications and the functionality of such TI products as used in such applications. TI has not conducted any testing other than that specifically described in the published documentation for a particular TI Resource.

You are authorized to use, copy and modify any individual TI Resource only in connection with the development of applications that include the TI product(s) identified in such TI Resource. NO OTHER LICENSE, EXPRESS OR IMPLIED, BY ESTOPPEL OR OTHERWISE TO ANY OTHER TI INTELLECTUAL PROPERTY RIGHT, AND NO LICENSE TO ANY TECHNOLOGY OR INTELLECTUAL PROPERTY RIGHT OF TI OR ANY THIRD PARTY IS GRANTED HEREIN, including but not limited to any patent right, copyright, mask work right, or other intellectual property right relating to any combination, machine, or process in which TI products or services are used. Information regarding or referencing third-party products or services does not constitute a license to use such products or services, or a warranty or endorsement thereof. Use of TI Resources may require a license from a third party under the patents or other intellectual property of the third party, or a license from TI under the patents or other intellectual property of TI.

TI RESOURCES ARE PROVIDED "AS IS" AND WITH ALL FAULTS. TI DISCLAIMS ALL OTHER WARRANTIES OR REPRESENTATIONS, EXPRESS OR IMPLIED, REGARDING TI RESOURCES OR USE THEREOF, INCLUDING BUT NOT LIMITED TO ACCURACY OR COMPLETENESS, TITLE, ANY EPIDEMIC FAILURE WARRANTY AND ANY IMPLIED WARRANTIES OF MERCHANTABILITY, FITNESS FOR A PARTICULAR PURPOSE, AND NON-INFRINGEMENT OF ANY THIRD PARTY INTELLECTUAL PROPERTY RIGHTS.

TI SHALL NOT BE LIABLE FOR AND SHALL NOT DEFEND OR INDEMNIFY YOU AGAINST ANY CLAIM, INCLUDING BUT NOT LIMITED TO ANY INFRINGEMENT CLAIM THAT RELATES TO OR IS BASED ON ANY COMBINATION OF PRODUCTS EVEN IF DESCRIBED IN TI RESOURCES OR OTHERWISE. IN NO EVENT SHALL TI BE LIABLE FOR ANY ACTUAL, DIRECT, SPECIAL, COLLATERAL, INDIRECT, PUNITIVE, INCIDENTAL, CONSEQUENTIAL OR EXEMPLARY DAMAGES IN CONNECTION WITH OR ARISING OUT OF TI RESOURCES OR USE THEREOF, AND REGARDLESS OF WHETHER TI HAS BEEN ADVISED OF THE POSSIBILITY OF SUCH DAMAGES.

You agree to fully indemnify TI and its representatives against any damages, costs, losses, and/or liabilities arising out of your non-compliance with the terms and provisions of this Notice.

This Notice applies to TI Resources. Additional terms apply to the use and purchase of certain types of materials, TI products and services. These include; without limitation, TI's standard terms for semiconductor products (<http://www.ti.com/sc/docs/stdterms.htm>), [evaluation modules](#), and [samples](http://www.ti.com/sc/docs/sampterm.htm) (<http://www.ti.com/sc/docs/sampterm.htm>).

Mailing Address: Texas Instruments, Post Office Box 655303, Dallas, Texas 75265  
Copyright © 2018, Texas Instruments Incorporated