

Interfacing a Differential-Output (Isolated) Amp to a Single-Ended Input ADC



Ashley Kang

Introduction

Whether you are sensing current in an industrial 3-phase servo motor system, a battery management system for an electric vehicle, or a photo voltaic inverter, it is often necessary to include some sort of safety isolation scheme. Safety-related standards define the specific isolation requirements for the end equipment associated with the particular design. Various factors come into play when determining what level of safety insulation (basic, supplemental, or reinforced) is required depending on the type of equipment, the voltage levels involved, and the environment that the equipment is to be installed.

Texas Instruments offers a variety of isolated current shunt amplifiers that are used in the previously-mentioned applications for voltage and current shunt sensing that meet either basic or reinforced insulation requirements. For applications requiring reinforced insulation, one such device is the AMC1301. The output of the AMC1301 is a fully differential signal centered around a common-mode voltage of 1.44 V that can be fed directly to a stand-alone analog-to-digital converter (ADC) as shown in Figure 1, or to the on-board ADC found in the MSP430 and C2000 family of microcontroller devices.

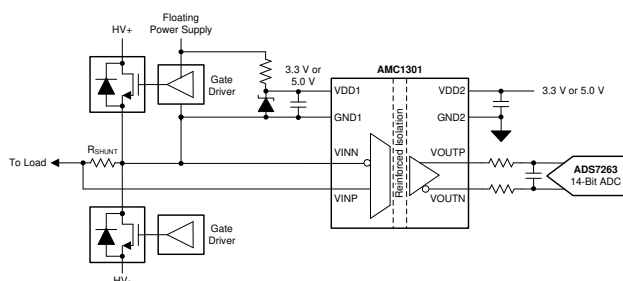


Figure 1. AMC1301 Functional Block Diagram

Embedded ADCs

Both the MSP430 and C2000 family of processors have embedded single-ended input ADCs so the question becomes: *How do I get this differential signal into my single-ended data converter?*

The simplest way to achieve this is to use only one output of the AMC1301 leaving the second output floating. The down side to this design is that only half the output voltage swing is available to the data converter, reducing the dynamic range of the measurement. The analog input range to the AMC1301 is ± 250 mV. With a fixed gain of 8.2, the VOUTN and VOUTP voltages are ± 1.025 V centered around the 1.44-V common-mode output as shown in Figure 2. Differentially, the output voltage is ± 2.05 V.

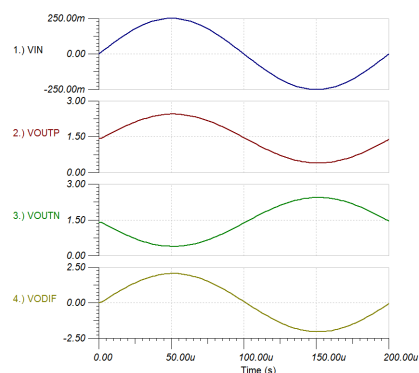


Figure 2. Differential Output Voltage

The addition of a differential to single-ended amplifier output stage, shown in Figure 3, allows the full output range of the AMC1301 to be provided to the ADC.

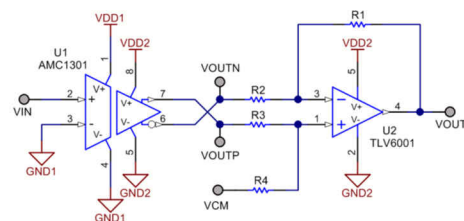


Figure 3. Differential to Single-Ended Output

Assuming a full scale sine wave of ± 250 mV is applied at VIN; the internal gain of the AMC1301 provides 2.05 Vpk-pk outputs at points VOUTP and VOUTN which are 180° out of phase. The difference between these signals, VODIF, is 4.1 Vpk-pk. When $R1 = R4$ and $R2 = R3$, Equation 1 shows the transfer function of the output stage.

$$V_{OUT} = V_{OUTP} \times \left(\frac{R4}{R3}\right) - V_{OUTN} \times \left(\frac{R1}{R2}\right) + V_{CM} \quad (1)$$

With equal value resistors for R1 through R4 in Equation 1 and VCM set to 2.5 V, Equation 2 reduces to:

$$V_{OUT} = (V_{OUTP} - V_{OUTN}) + V_{CM} \quad (2)$$

The plots of Figure 4 show the input voltage and output voltages of the AMC1301 along with the output voltage of the final differential to single-ended output stage. Note that the differential voltage of ± 2.05 V is transposed to a single-ended signal from 0.5 to 4.5 V.

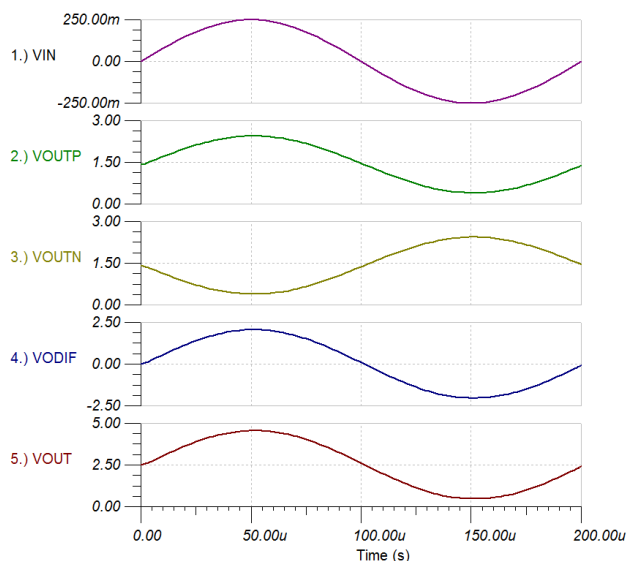


Figure 4. Single-Ended Output Voltage

Depending on the input voltage range of the ADC, gain or attenuation can be incorporated into the differential to single-ended stage to adjust the output swing. The output common-mode voltage can be adjusted to fit the input needs of the ADC as well.

Design Example

The ADC12 found on the MSP430 devices have an input voltage range of 0–2.5 V when using the internal voltage reference. Using the VOUTP from the AMC1301 can provide the ADC12 with an input signal ranging from 0.415 V to 2.465 V, well within the input range of the converter while only using half the input range of the AMC1301. As Figure 5 shows, using a differential to single-ended amplifier configuration with a gain of 0.5 and common mode voltage of 1.25 V, the entire voltage range of the AMC1301 can be applied to the ADC12.

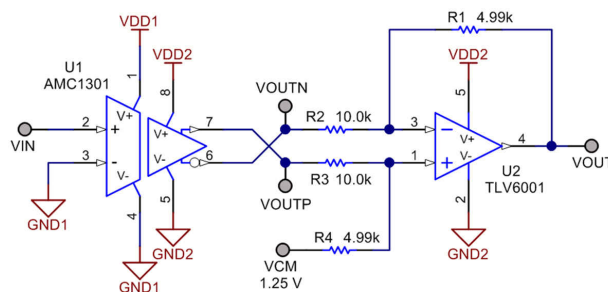


Figure 5. Scaled Differential to Single-Ended Output

Alternative Device Recommendations

The AMC1100 or AMC1200 provide basic isolation with similar performance to the AMC1301 at a lower price point. For the TLV170 provides this option for applications that require a bipolar output.

Table 1. Alternative Device Recommendations

Device	Optimized Parameter	Performance Trade-Off
AMC1100	Galvanic Isolation up to 4250 V _{PEAK}	Lower Transient Immunity
AMC1200	Galvanic Isolation up to 4250 V _{PEAK}	Basic Isolation versus Reinforced
TLV170	Bi-polar operation to ± 18 V	Higher input bias current

Conclusion

While it is possible to use a single output of the AMC1301 to drive a single-ended ADC, adding a differential to single-ended op-amp stage at the output ensures the target application has the largest possible dynamic range.

Related Documentation

1. [Low-Drift, Low-Side Current Measurements for Three-Phase Systems](#)
2. [Precision Current Measurements on High Voltage Power Supply Rails](#)

IMPORTANT NOTICE AND DISCLAIMER

TI PROVIDES TECHNICAL AND RELIABILITY DATA (INCLUDING DATA SHEETS), DESIGN RESOURCES (INCLUDING REFERENCE DESIGNS), APPLICATION OR OTHER DESIGN ADVICE, WEB TOOLS, SAFETY INFORMATION, AND OTHER RESOURCES "AS IS" AND WITH ALL FAULTS, AND DISCLAIMS ALL WARRANTIES, EXPRESS AND IMPLIED, INCLUDING WITHOUT LIMITATION ANY IMPLIED WARRANTIES OF MERCHANTABILITY, FITNESS FOR A PARTICULAR PURPOSE OR NON-INFRINGEMENT OF THIRD PARTY INTELLECTUAL PROPERTY RIGHTS.

These resources are intended for skilled developers designing with TI products. You are solely responsible for (1) selecting the appropriate TI products for your application, (2) designing, validating and testing your application, and (3) ensuring your application meets applicable standards, and any other safety, security, regulatory or other requirements.

These resources are subject to change without notice. TI grants you permission to use these resources only for development of an application that uses the TI products described in the resource. Other reproduction and display of these resources is prohibited. No license is granted to any other TI intellectual property right or to any third party intellectual property right. TI disclaims responsibility for, and you will fully indemnify TI and its representatives against, any claims, damages, costs, losses, and liabilities arising out of your use of these resources.

TI's products are provided subject to [TI's Terms of Sale](#) or other applicable terms available either on [ti.com](#) or provided in conjunction with such TI products. TI's provision of these resources does not expand or otherwise alter TI's applicable warranties or warranty disclaimers for TI products.

TI objects to and rejects any additional or different terms you may have proposed.

Mailing Address: Texas Instruments, Post Office Box 655303, Dallas, Texas 75265
Copyright © 2023, Texas Instruments Incorporated